

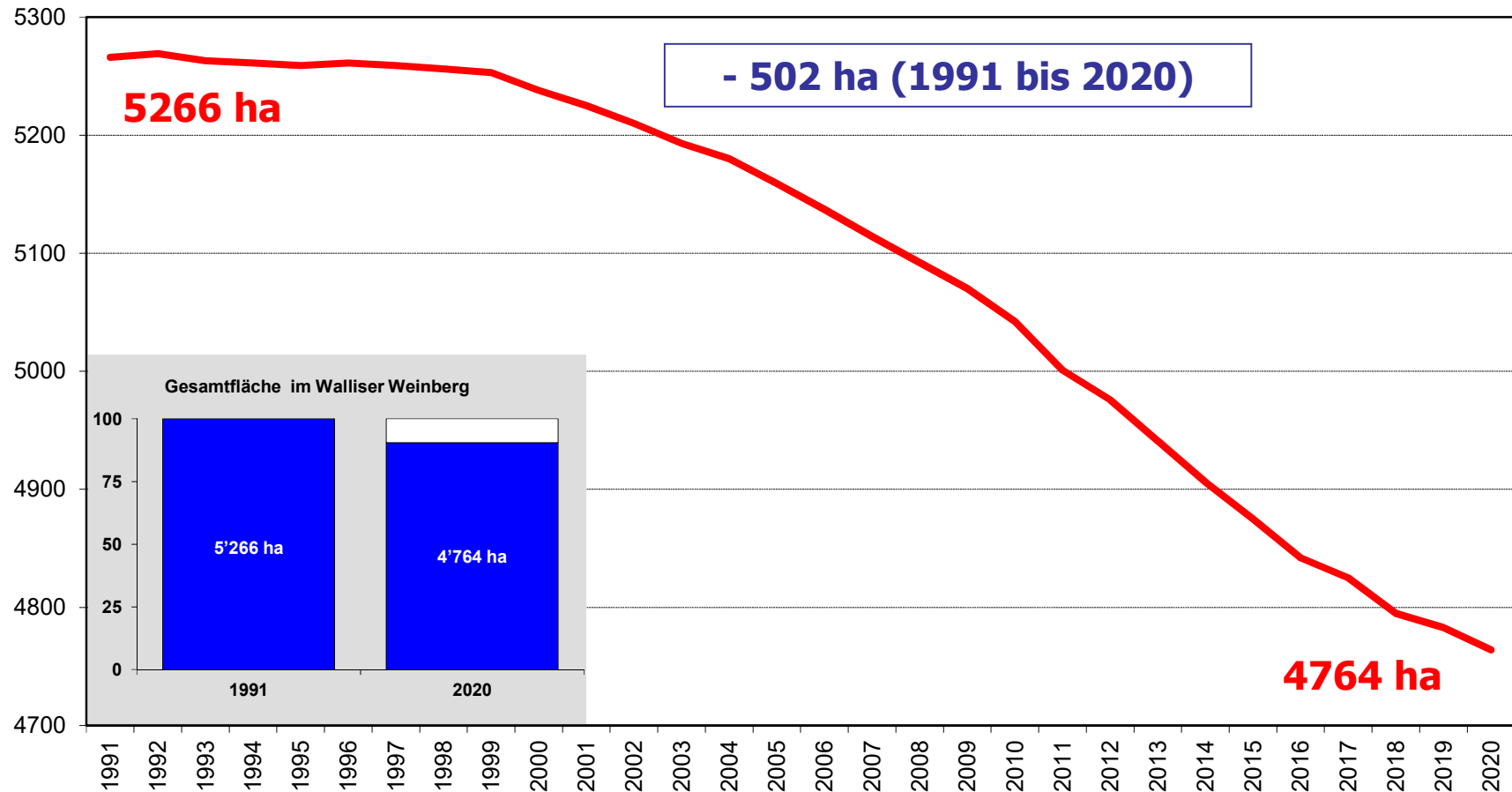
Stand und Entwicklung des Sortenbestandes im Walliser Weinberg

Kantonales Weinbauamt
Rebbergregisterauszug 31. Dezember 2020

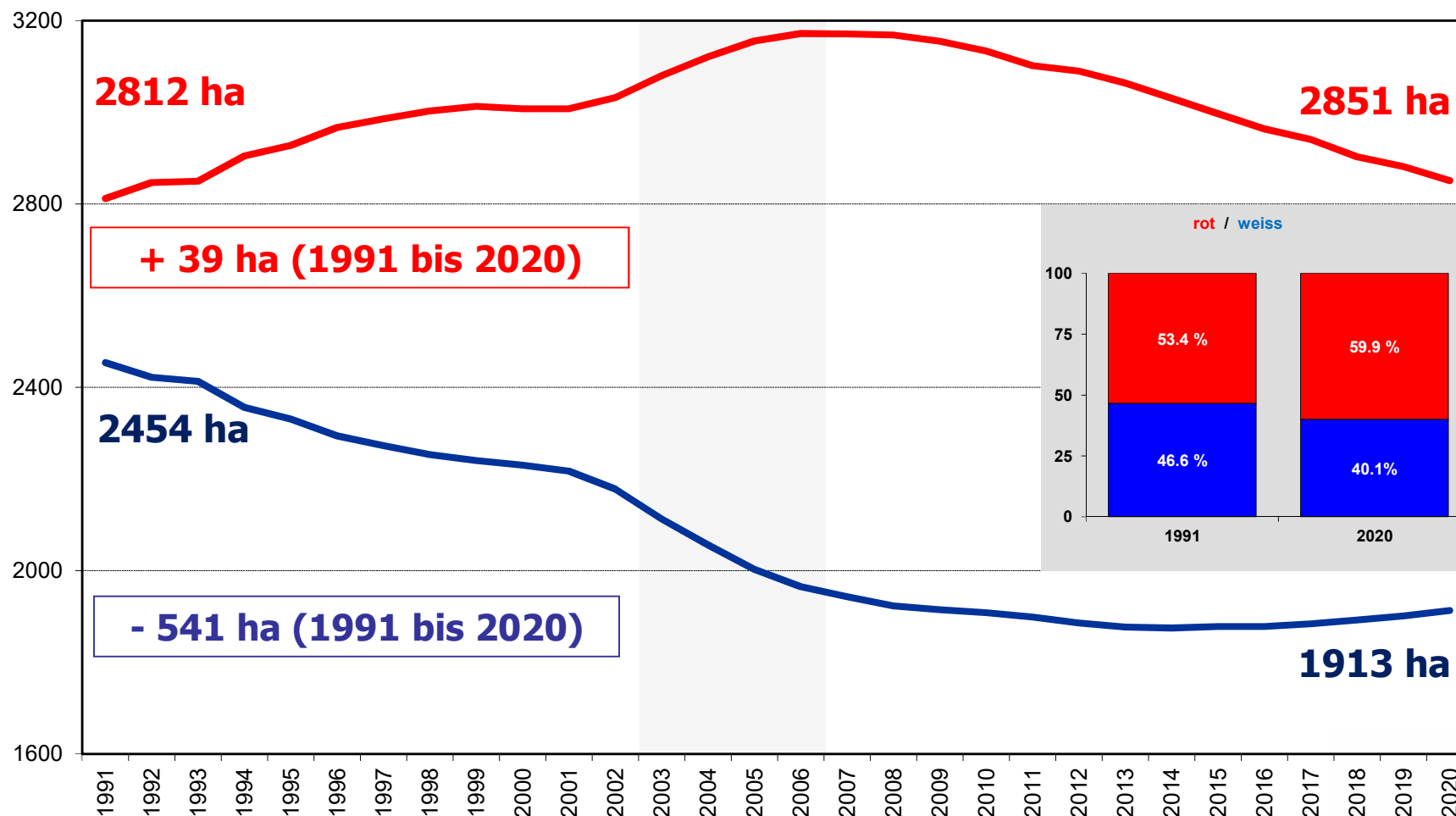
Walliser Weinberg

- Situation zwischen 1991 und 2020 (Folio 3 bis 5)
- Erneuerungsrhythmus (Folio 6)
- Drei Hauptsorten (Folio 7 bis 14)
- Einheimische Rebsorten (Folio 15 bis 22)
- Weitere Rebsorten (Folio 23 bis 38)
- Übersichtstabelle (Folio 39)

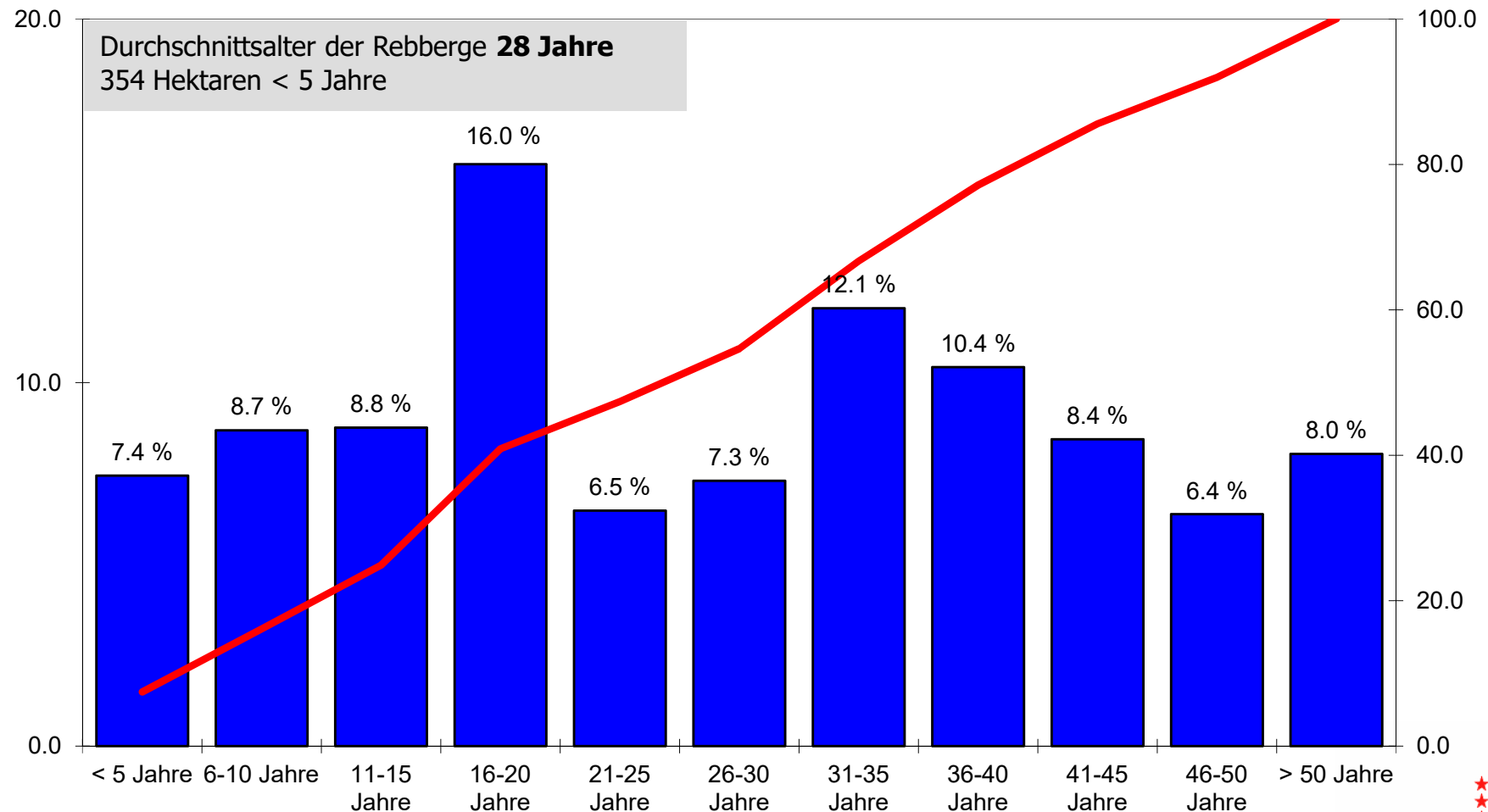
Entwicklung der Gesamtfläche im Walliser Weinberg



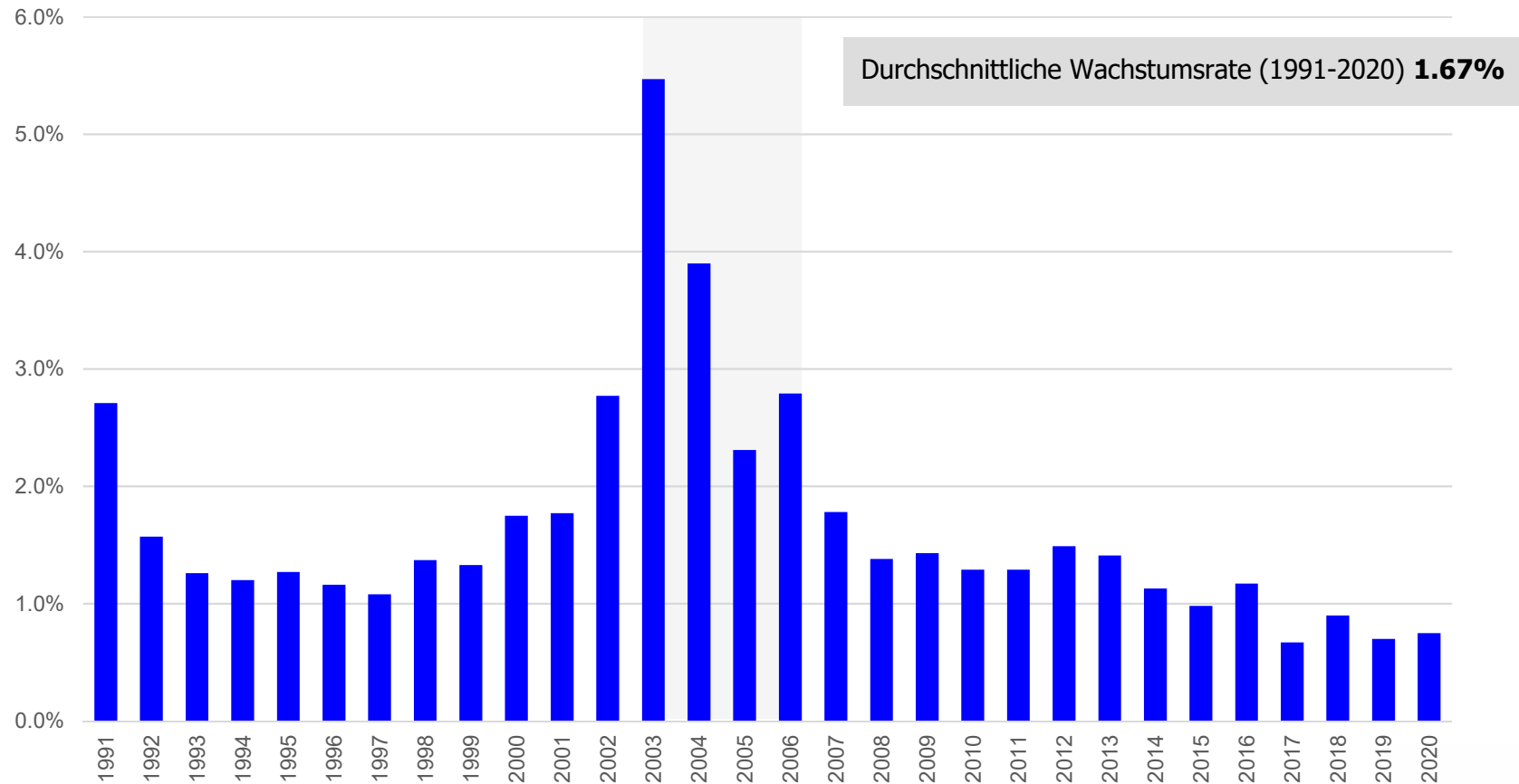
Entwicklung der Flächen mit roten und weissen Rebsorten im Walliser Weinberg



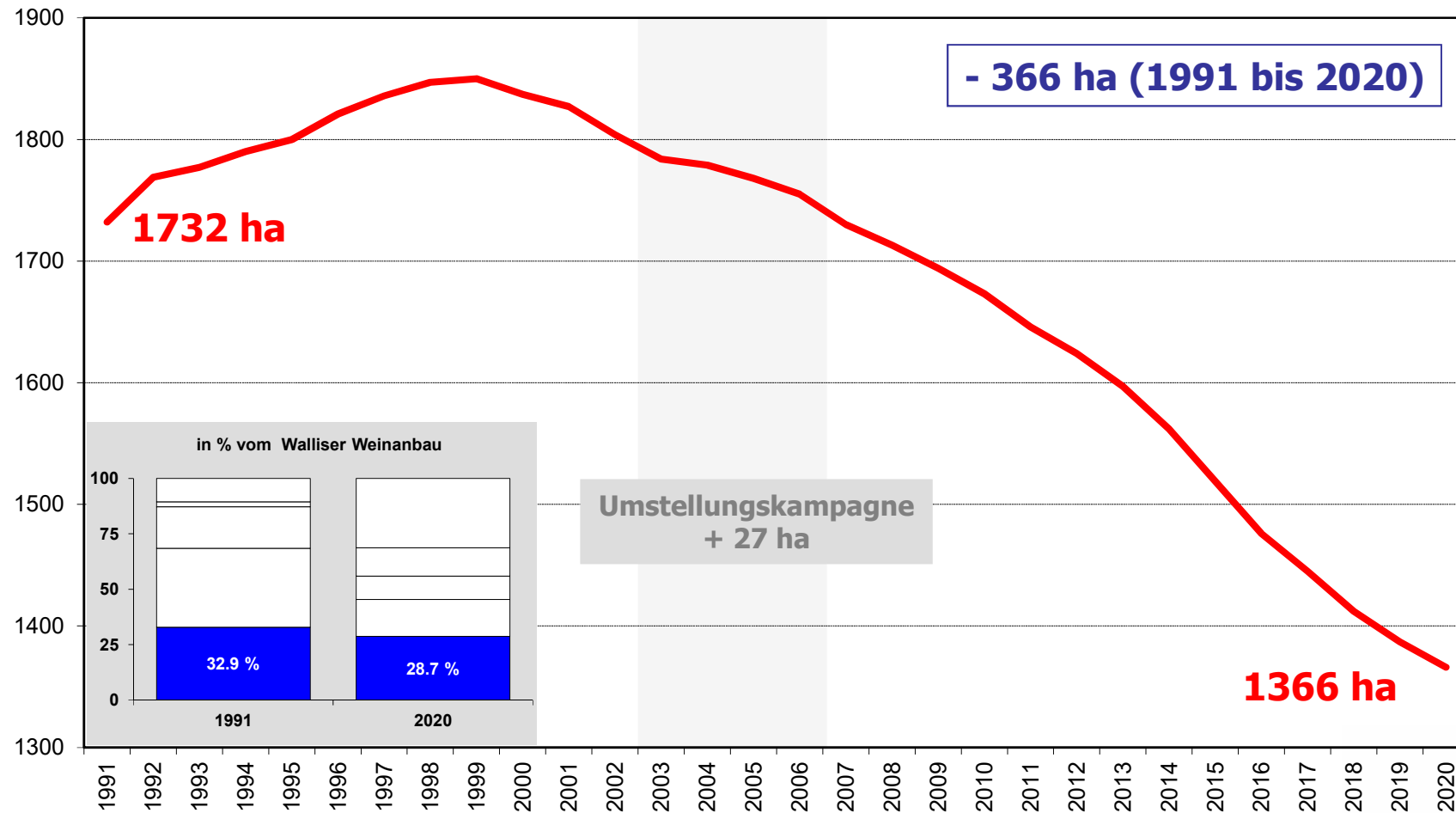
Altersstruktur des Walliser Weinberges (Abstufungen von 5 Jahren)



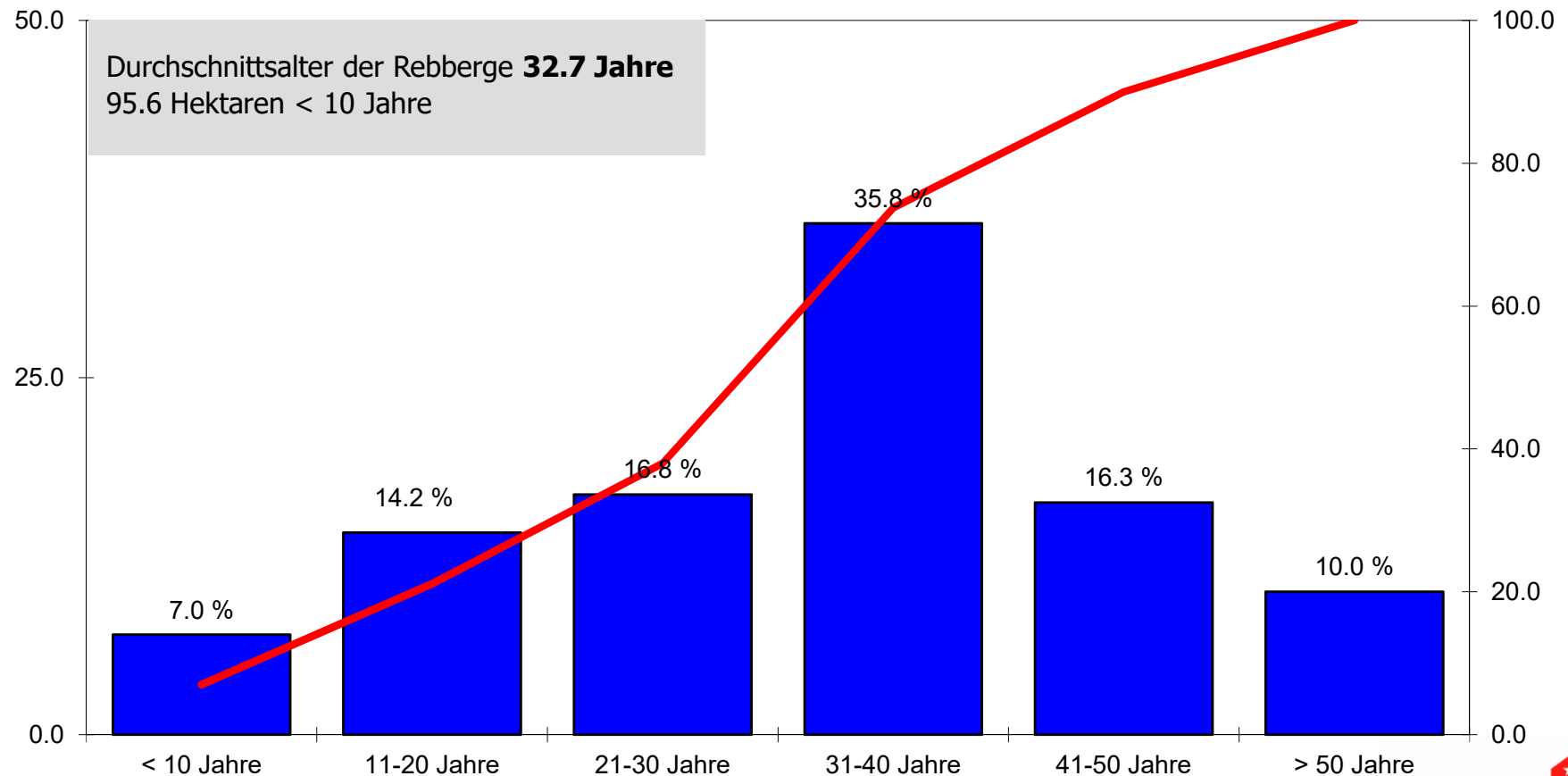
Erneuerungsrythmus des Weinberges



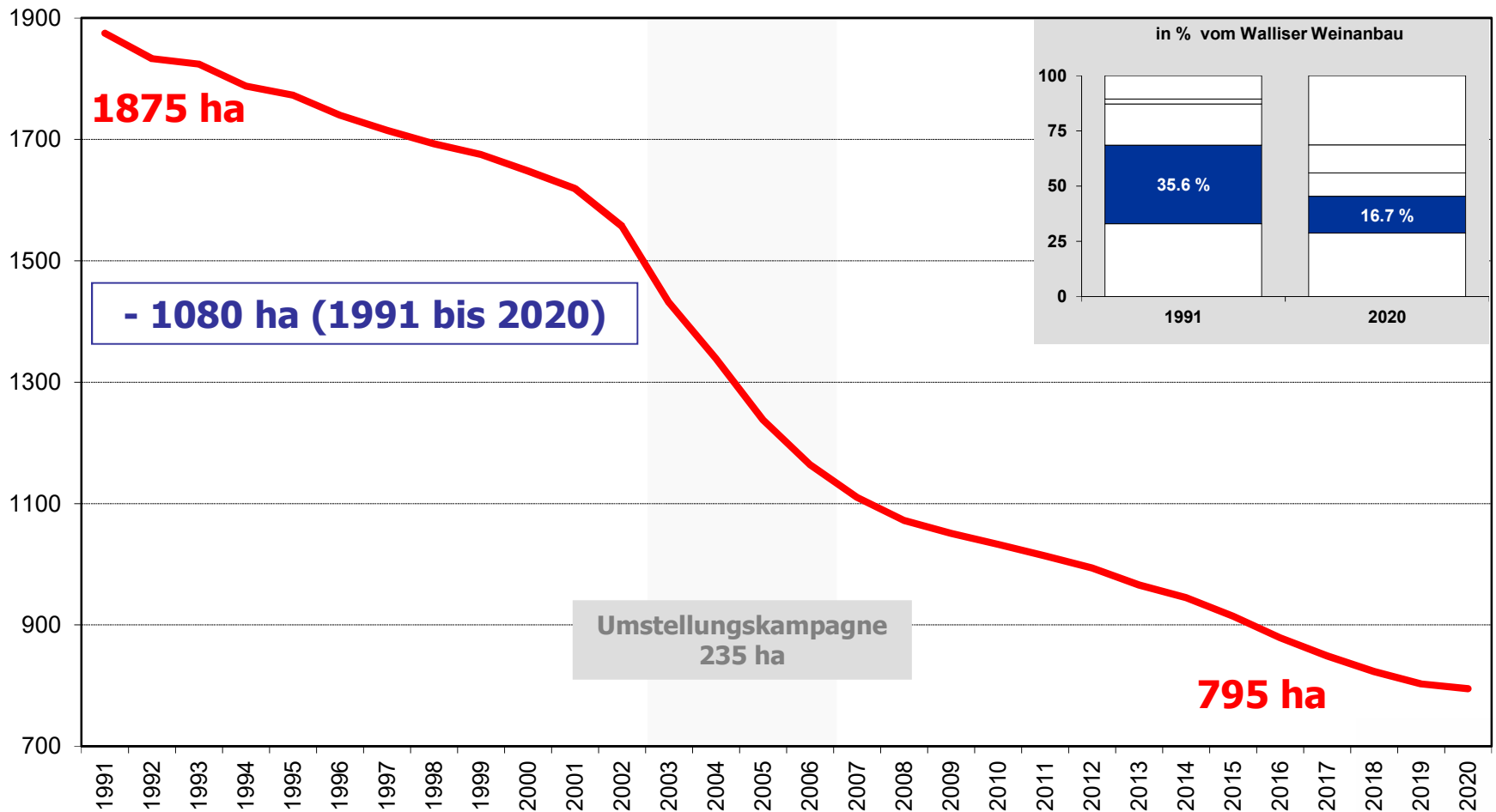
Flächenentwicklung Pinot Noir



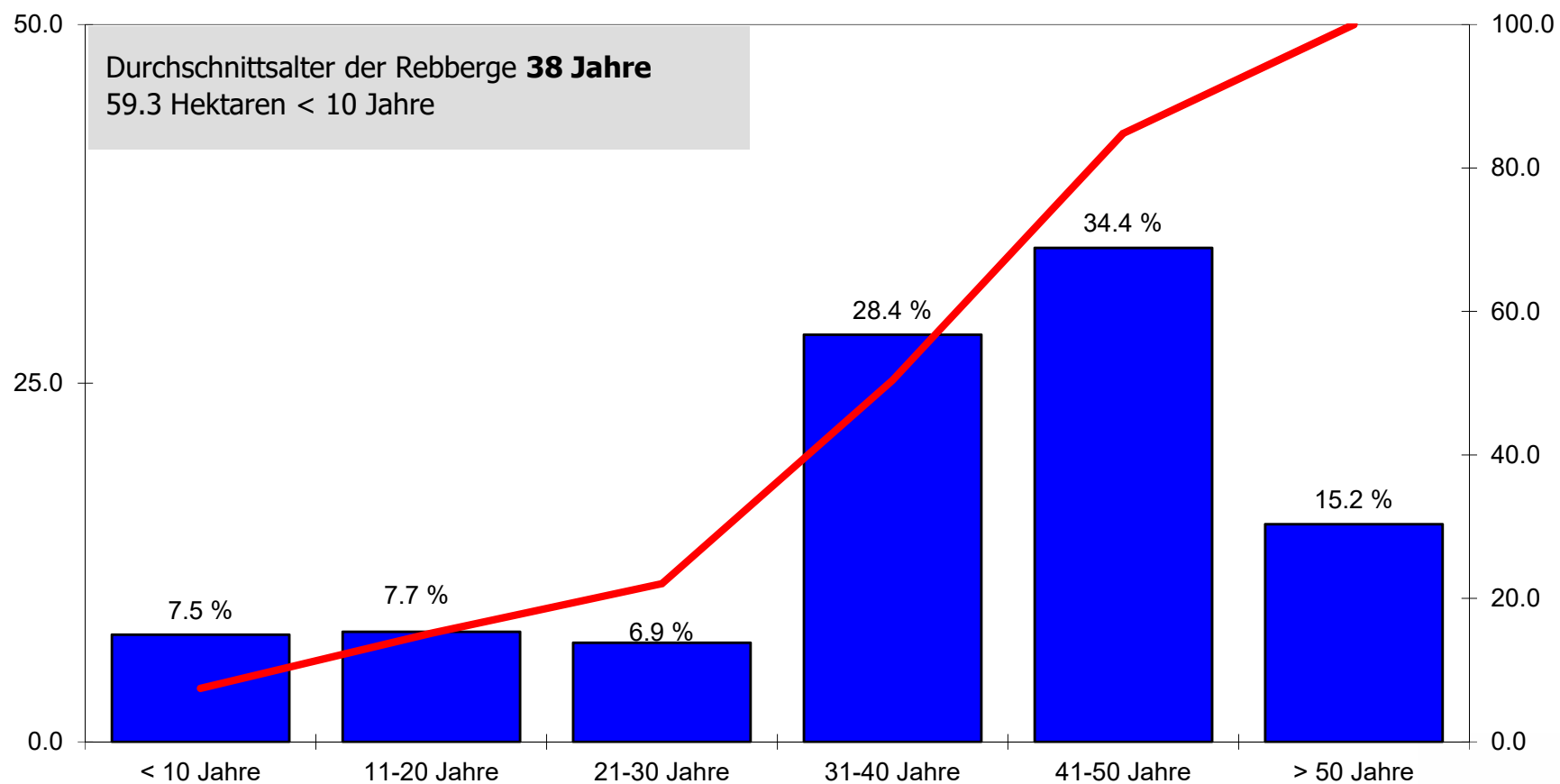
Alterstruktur Pinot Noir



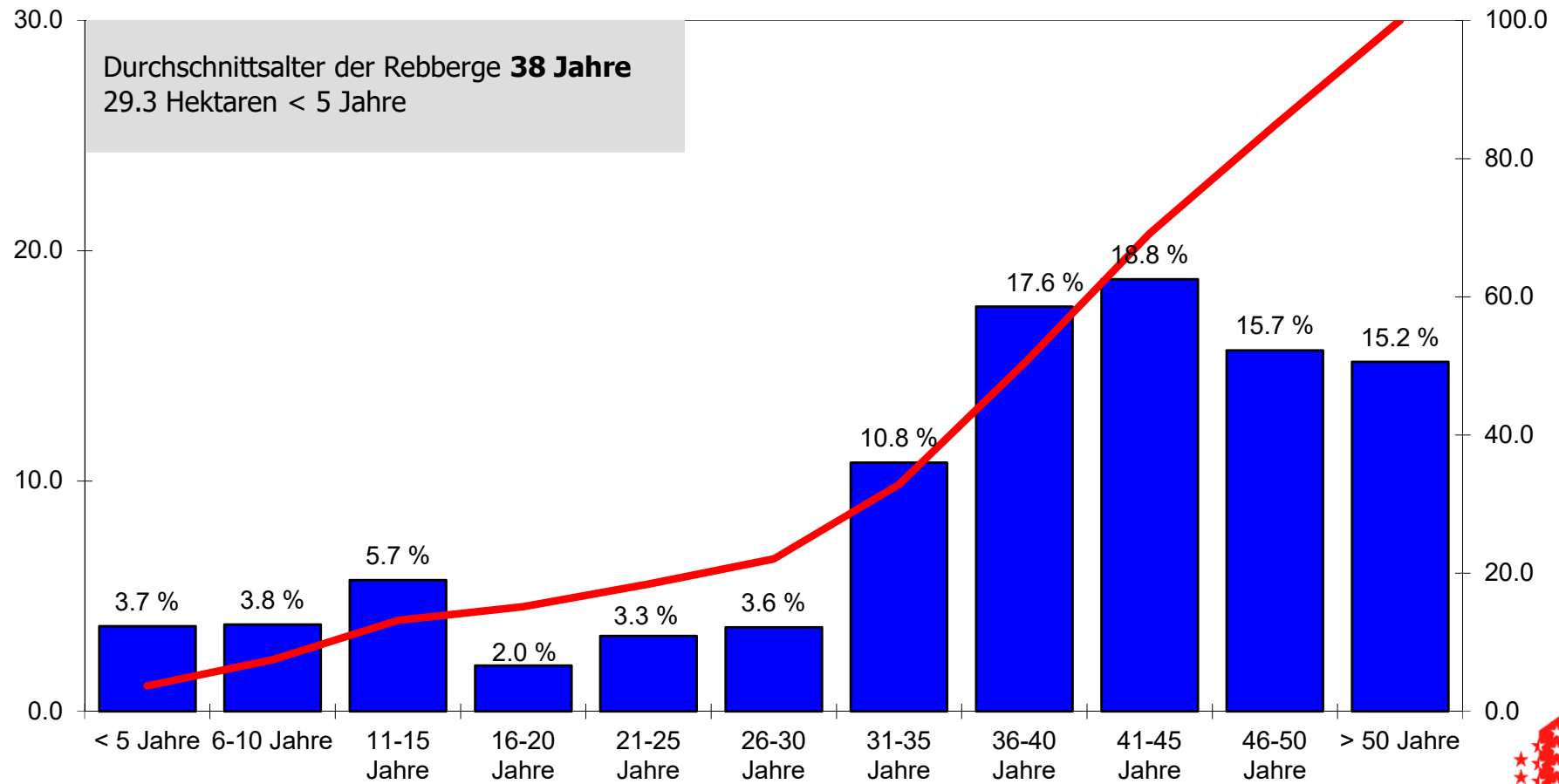
Flächenentwicklung Chasselas



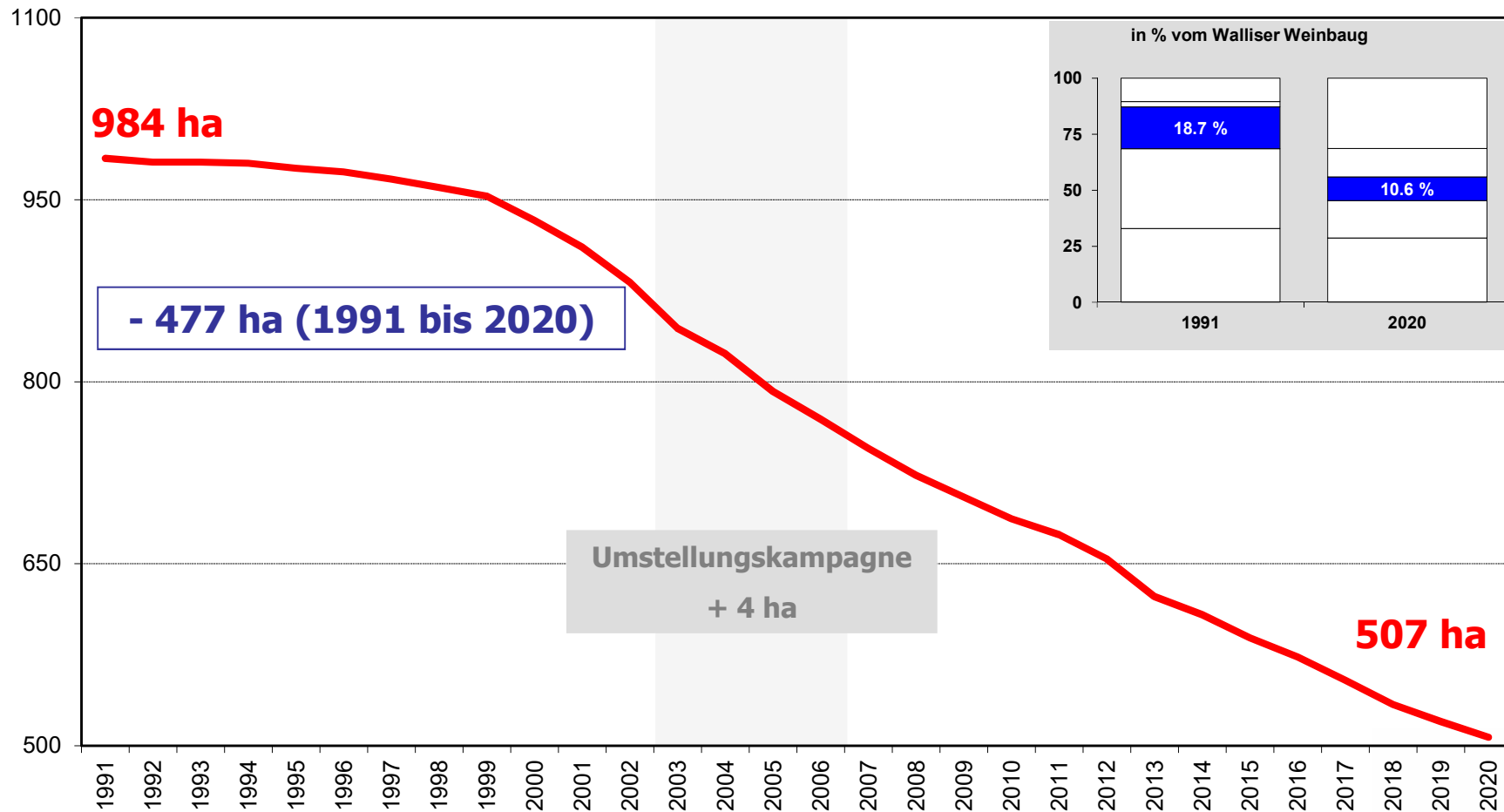
Altersstruktur Chasselas (Abstufungen von 10 Jahren)



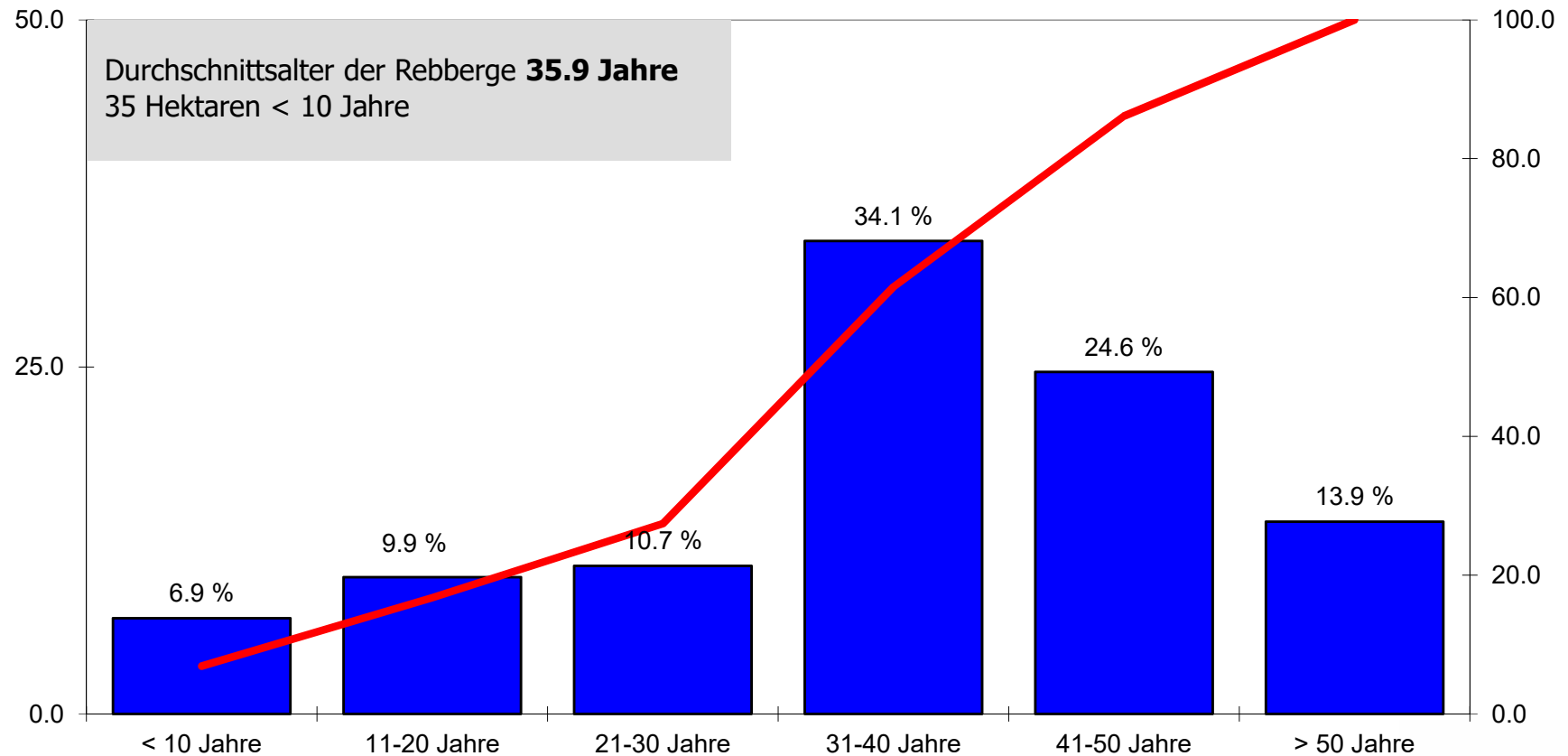
Alterstruktur Chasselas (Abstufungen von 5 Jahren)



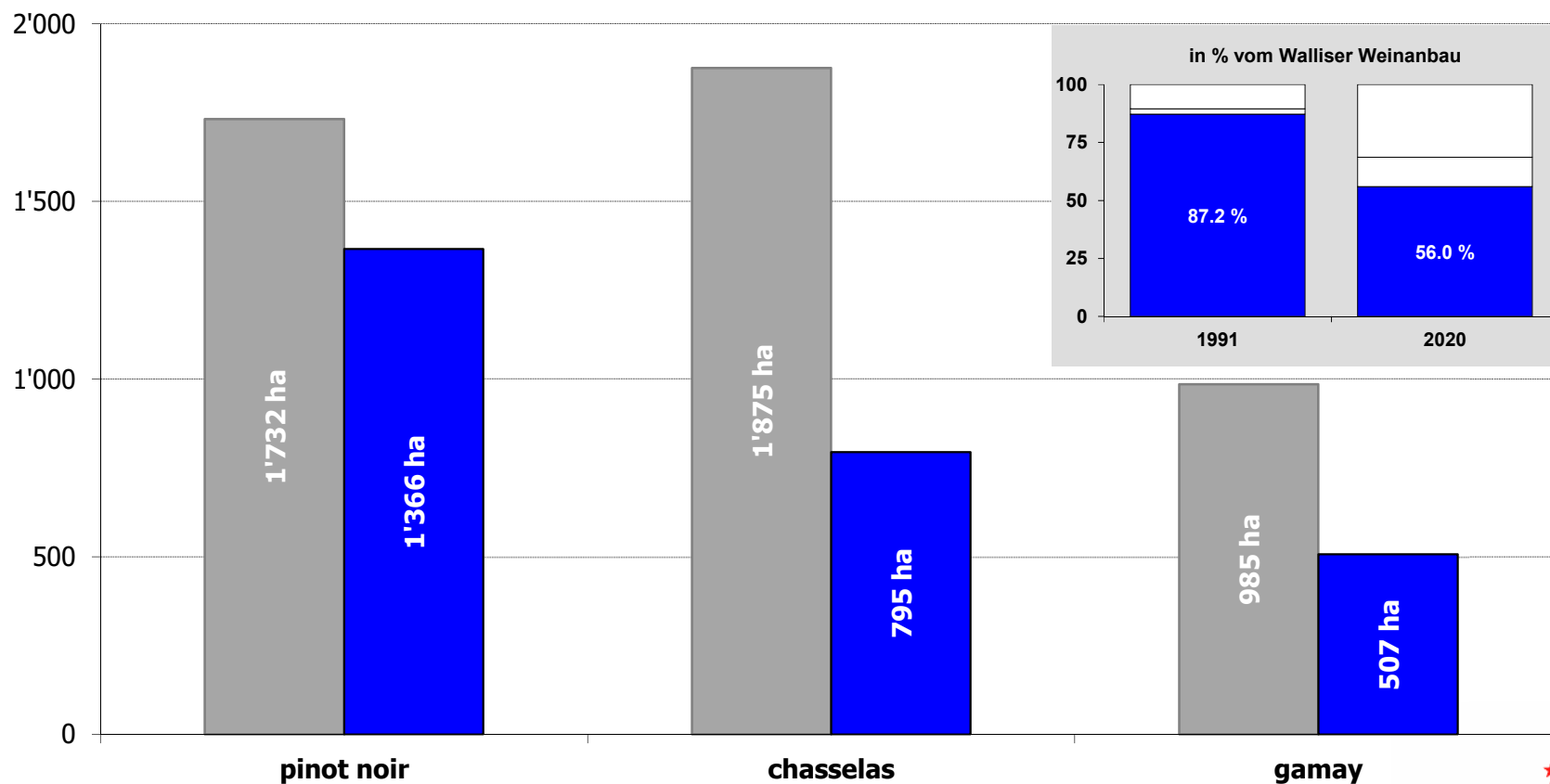
Flächenentwicklung Gamay



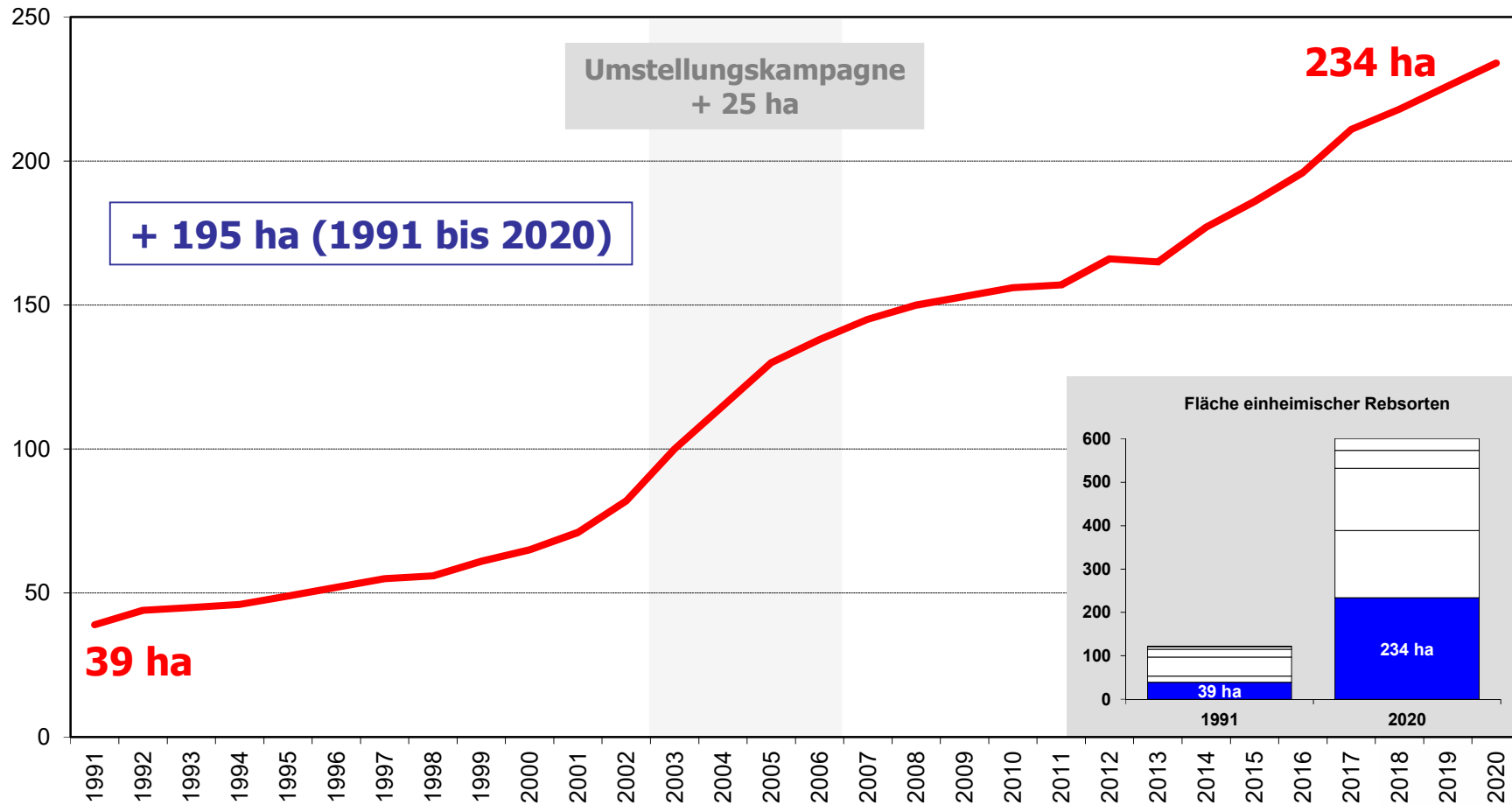
Altersstruktur Gamay



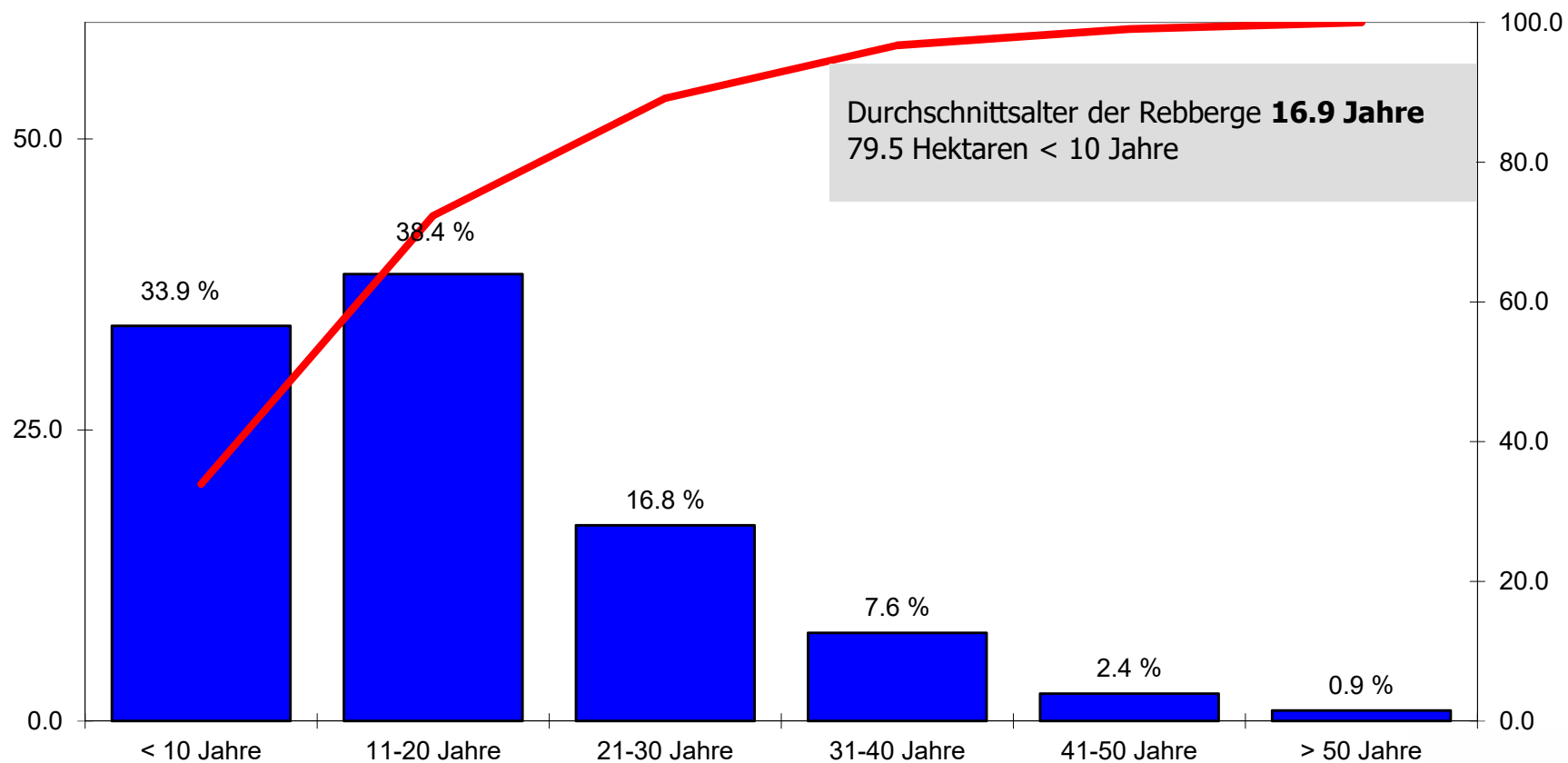
Zusammenfassung der Entwicklung der drei Hauptrebsorten (1991 – 2020)



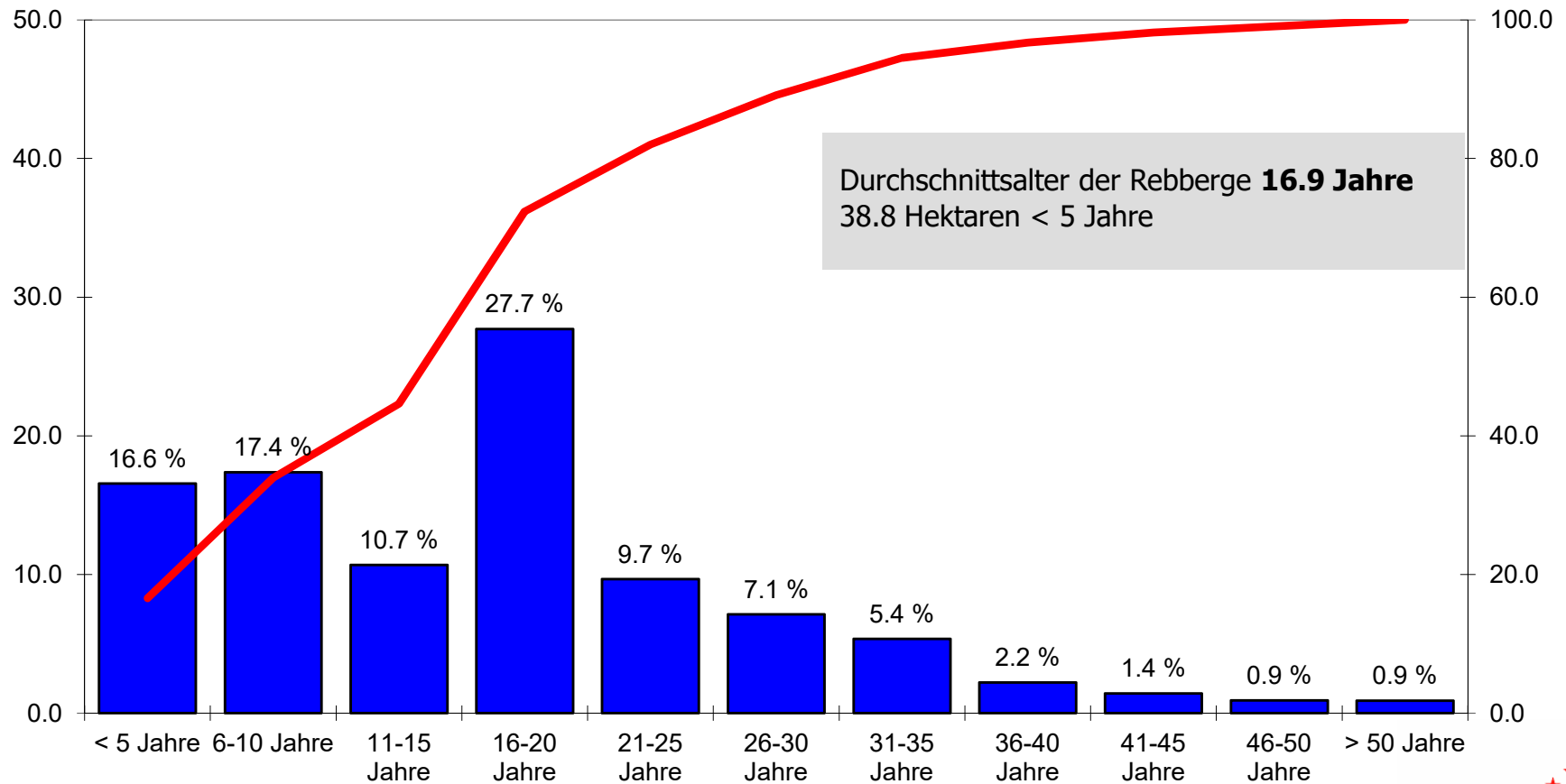
Flächenentwicklung Arvine



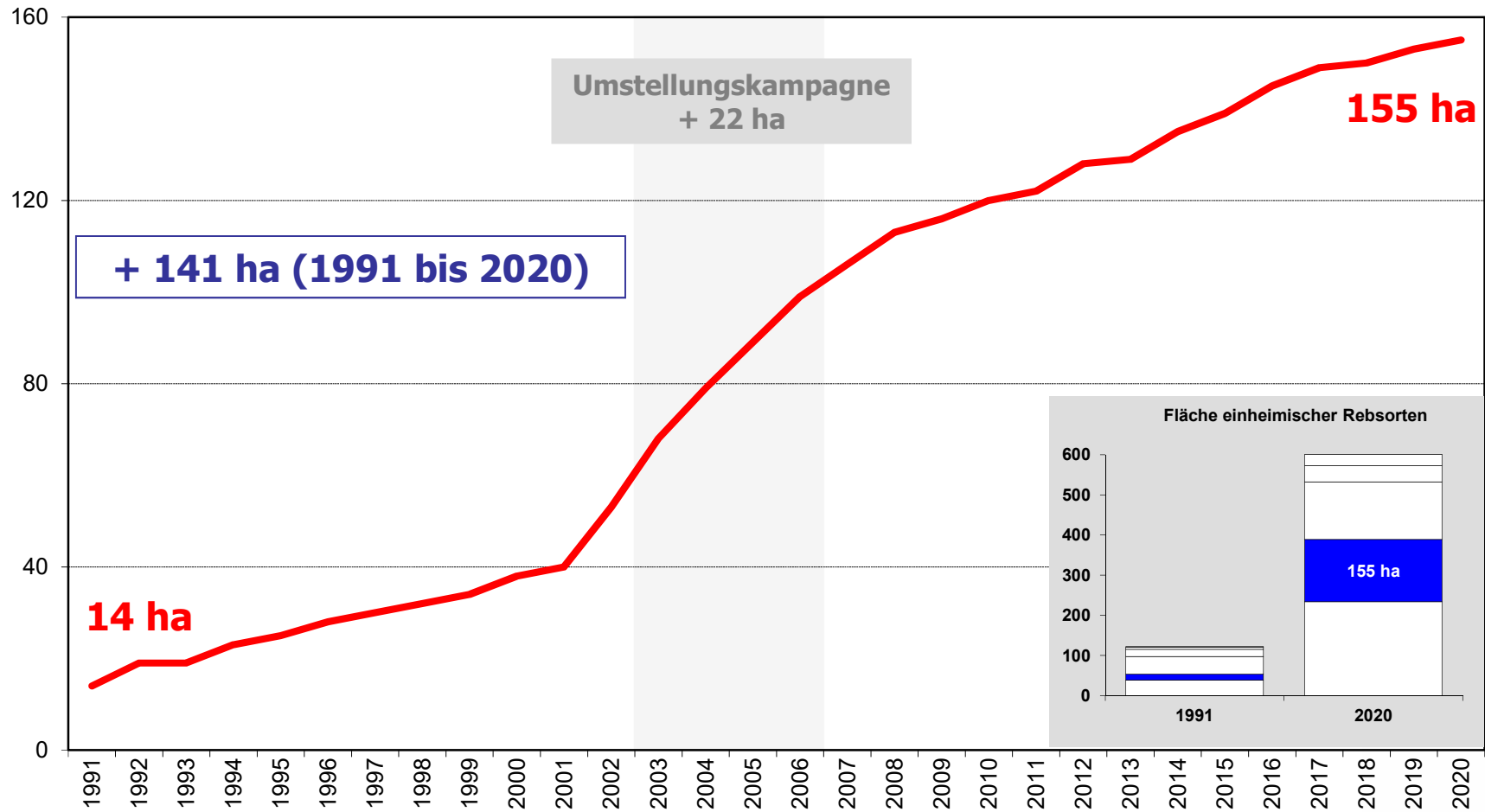
Altersstruktur Arvine (Abstufungen von 10 Jahren)



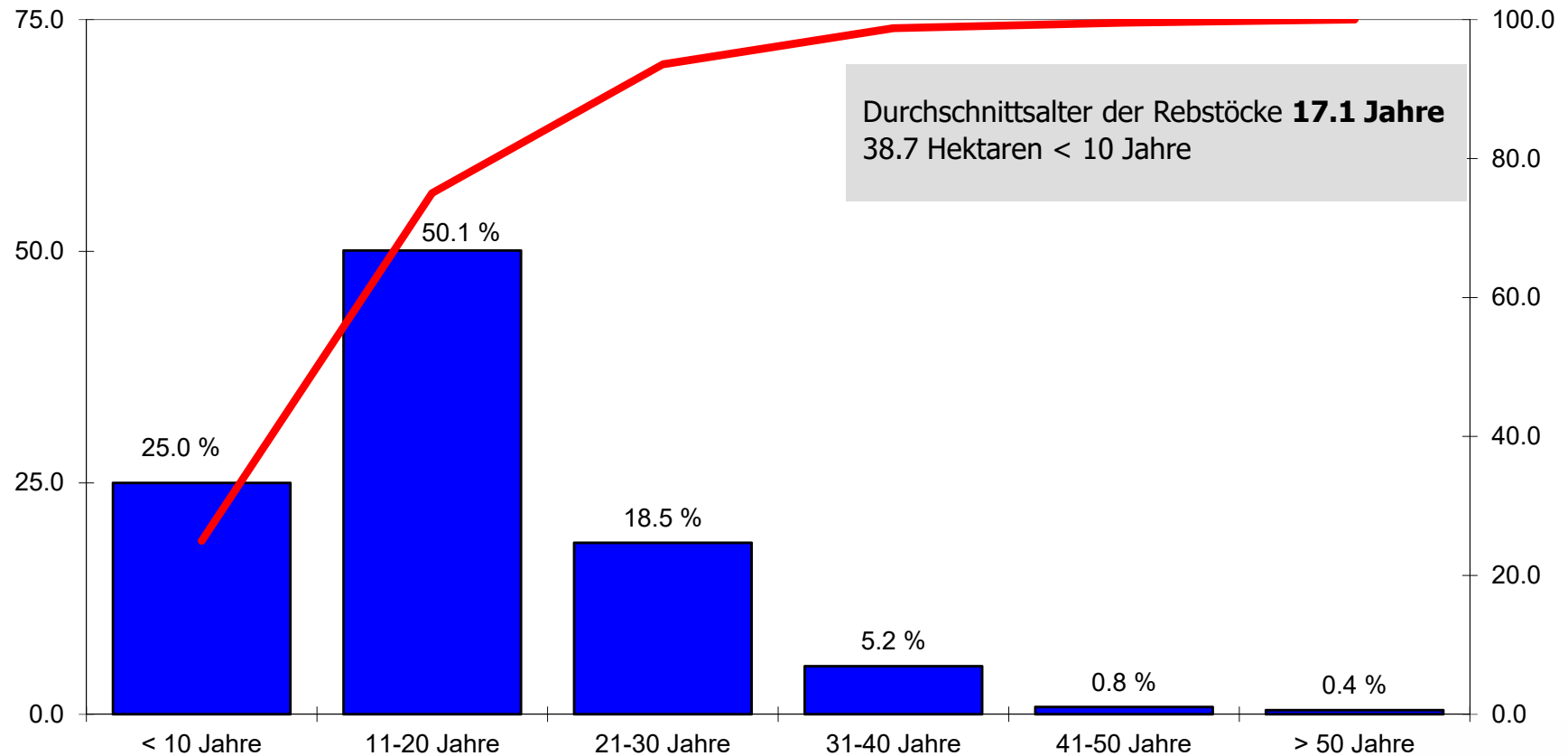
Altersstruktur Arvine (Abstufungen von 5 Jahren)



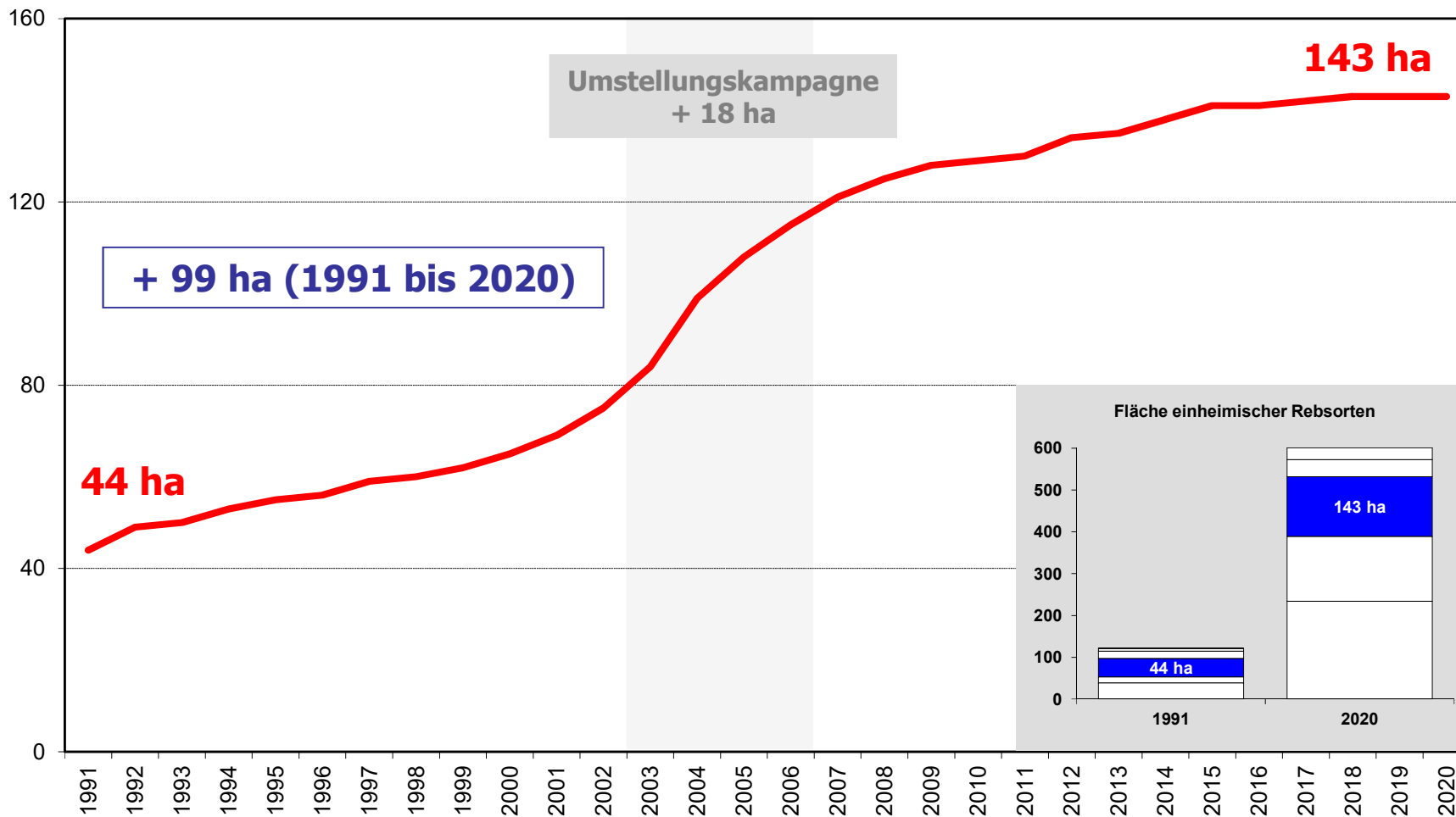
Flächenentwicklung Cornalin



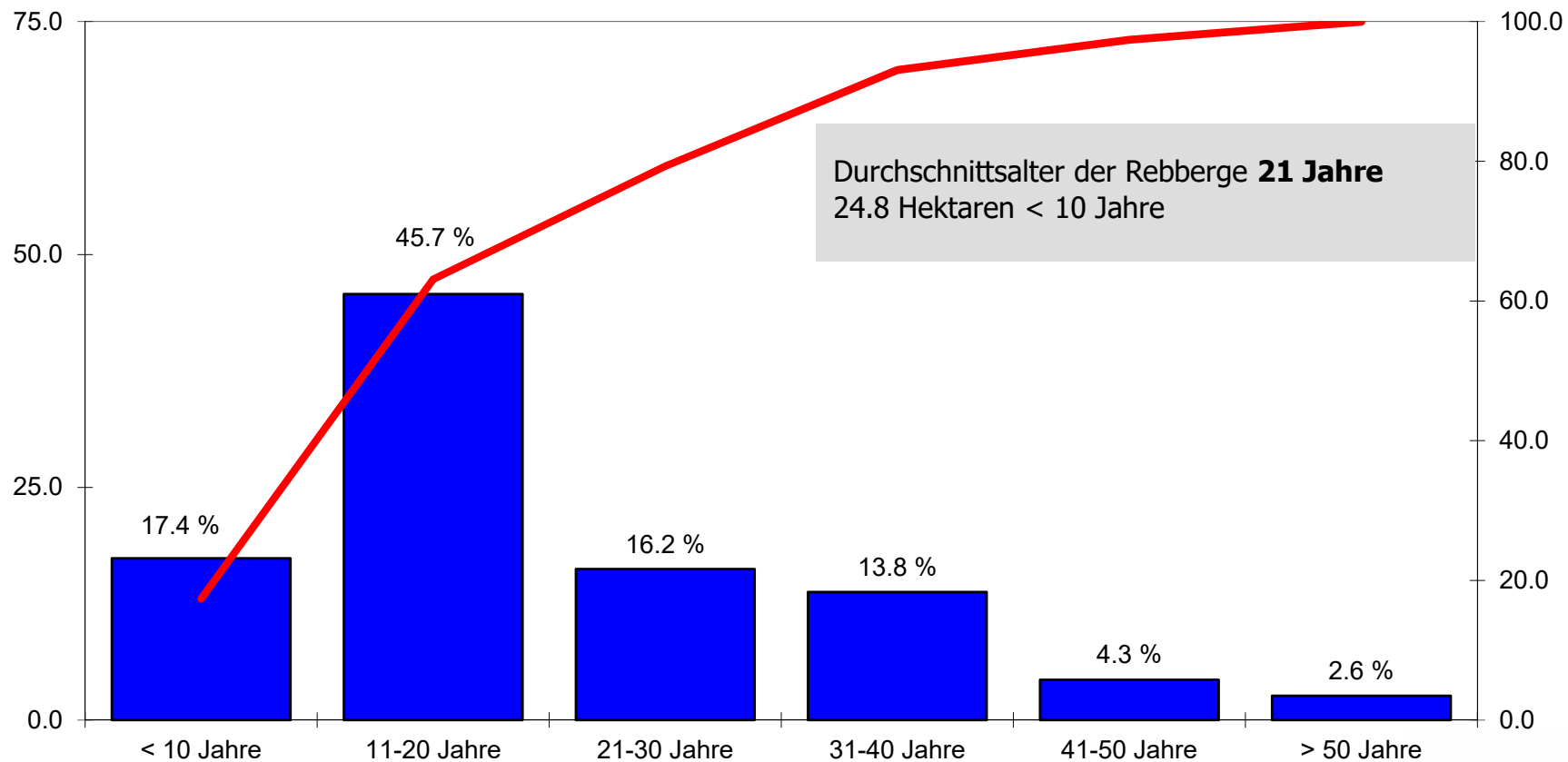
Altersstruktur Cornalin



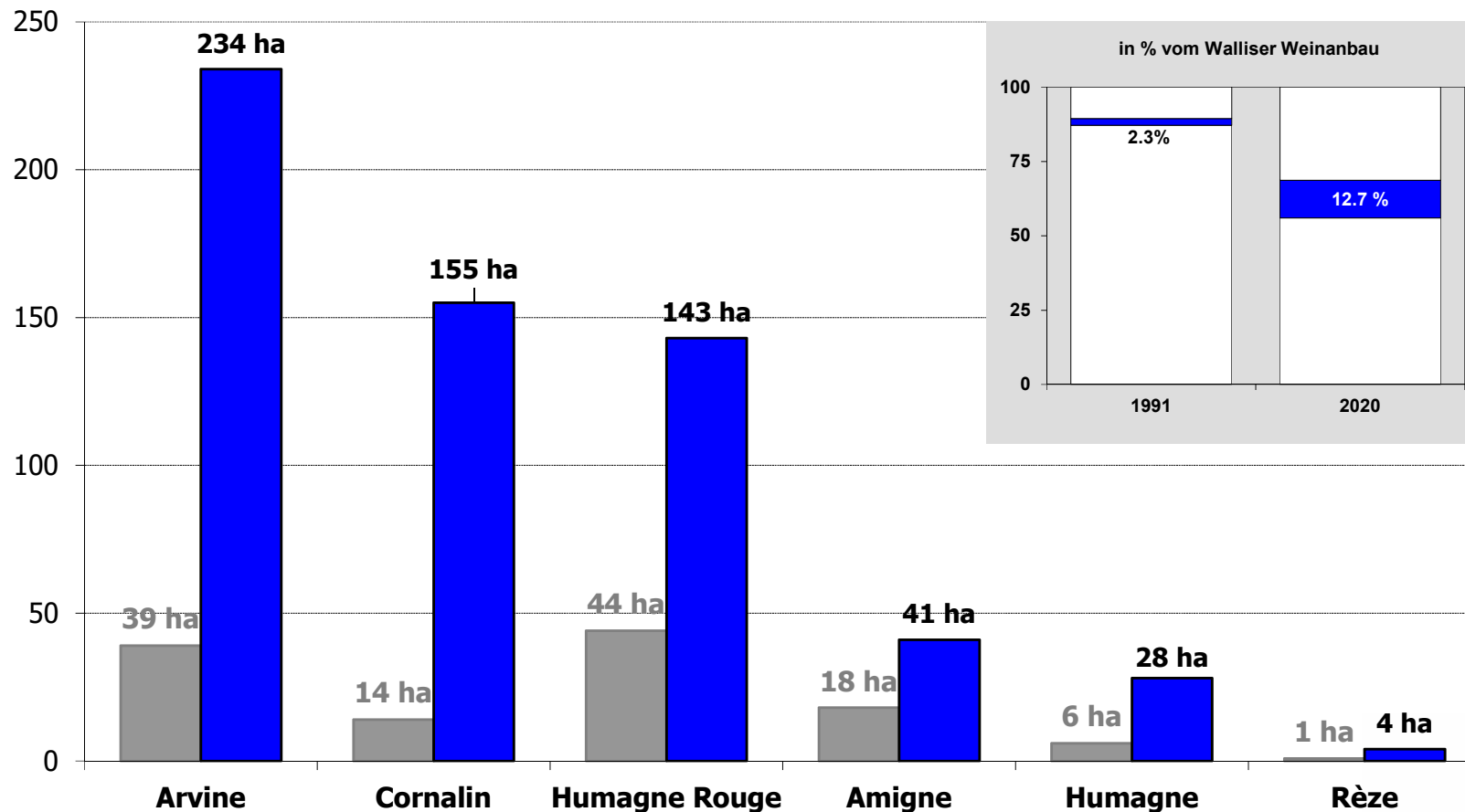
Flächenentwicklung Humagne Rouge



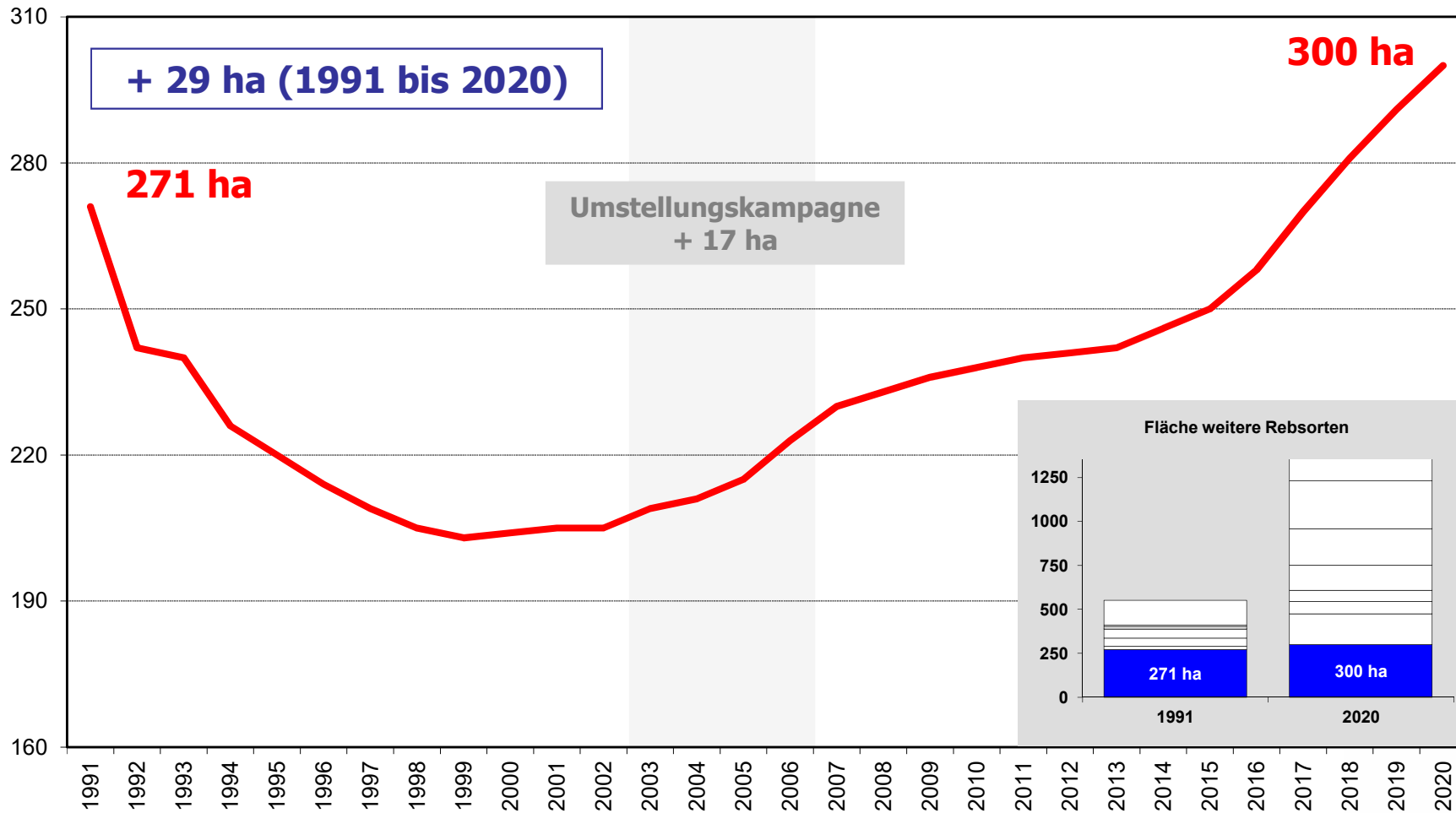
Altersstruktur Humagne Rouge



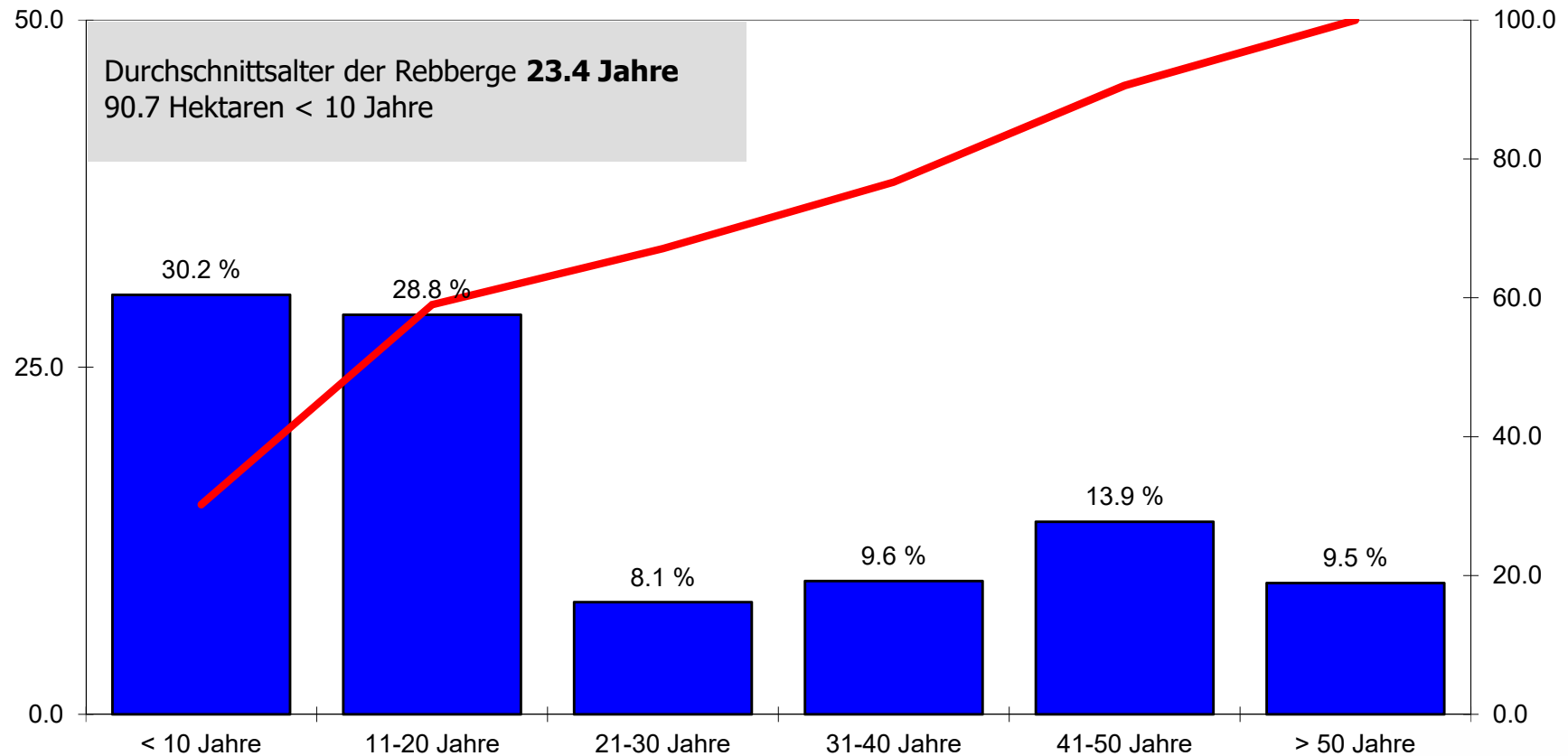
Zusammenfassung der Entwicklung der heimischen Rebsorten (1991 – 2020)



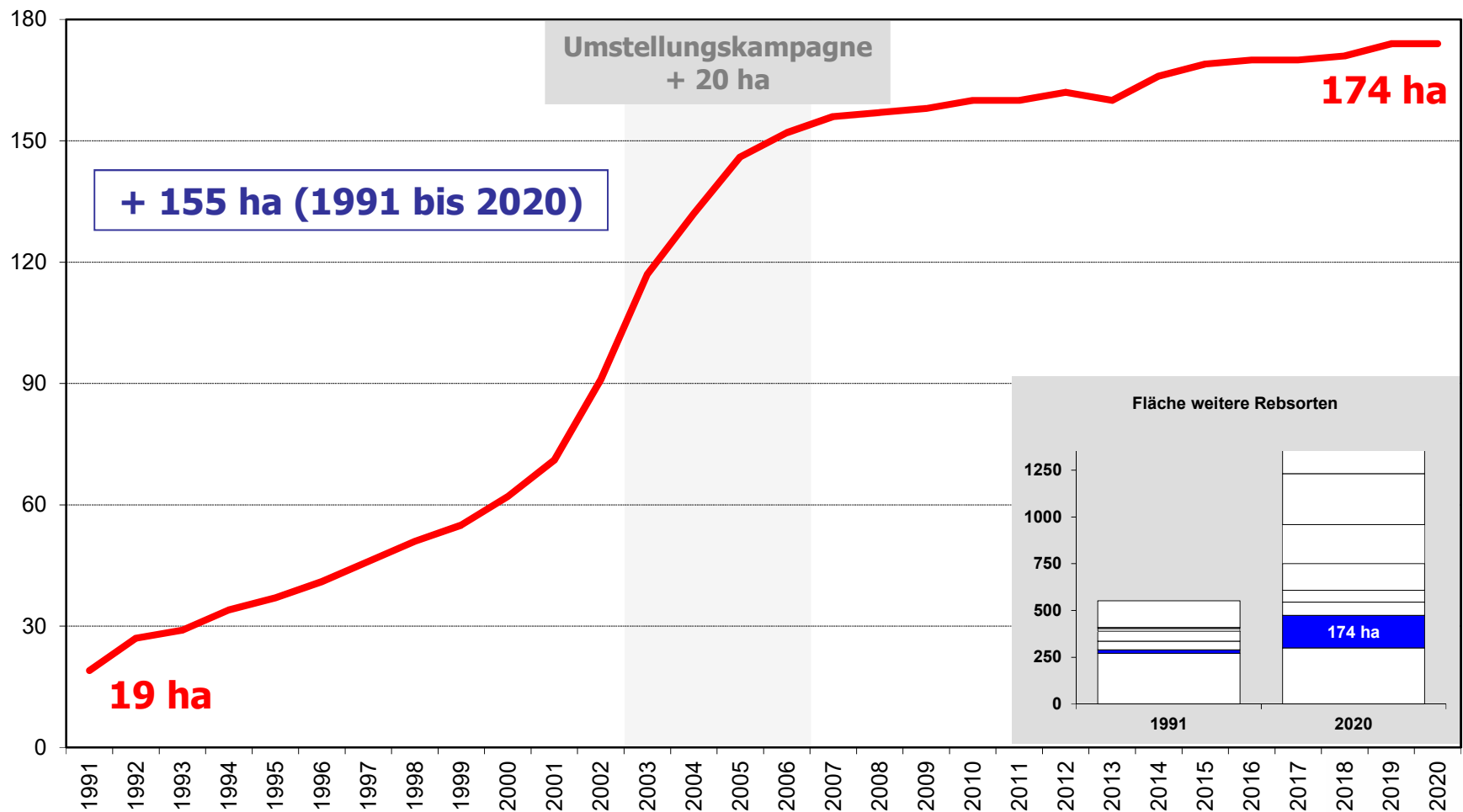
Flächenentwicklung Sylvaner/Rhin



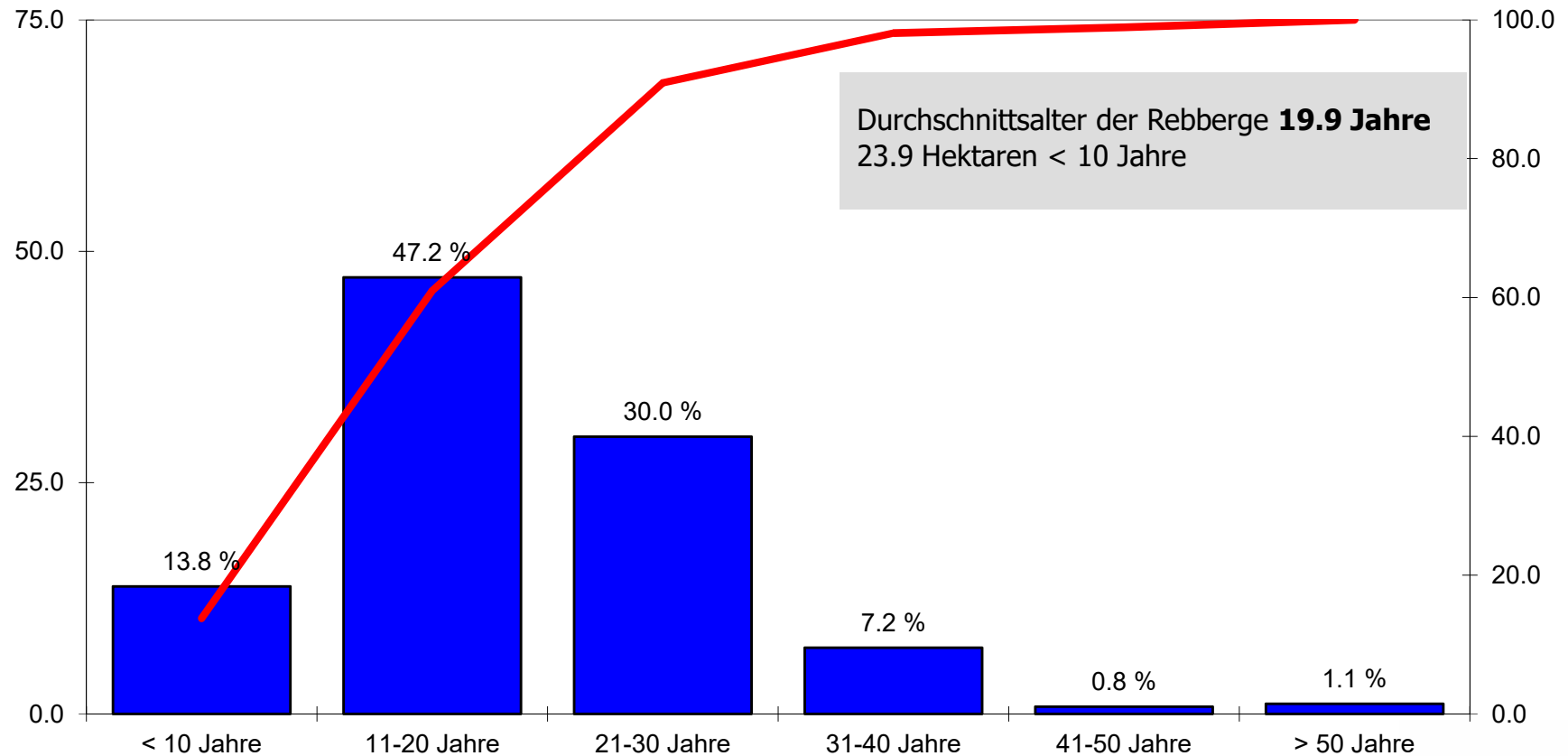
Alterstruktur Sylvaner/Rhin



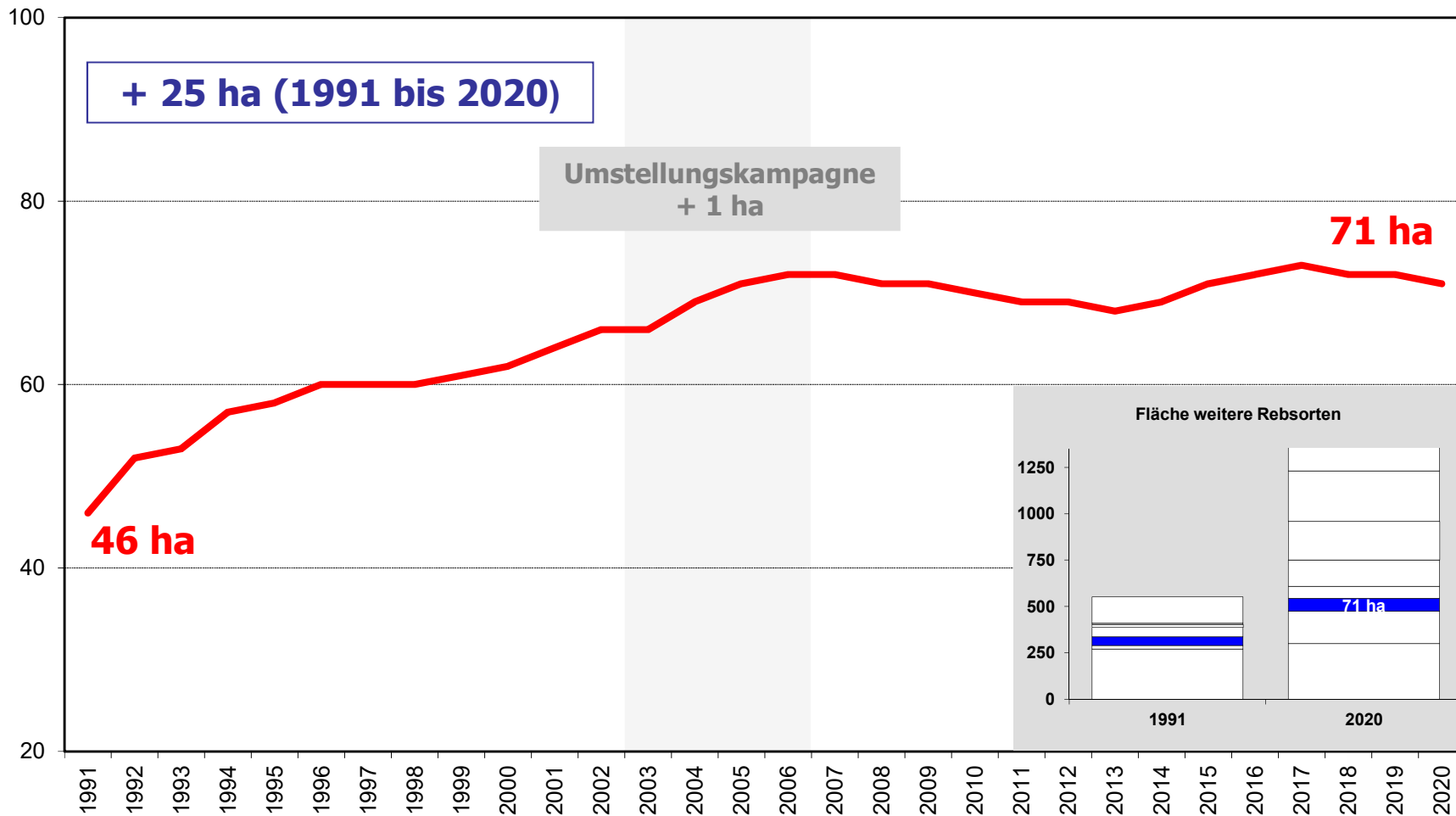
Flächenentwicklung Syrah



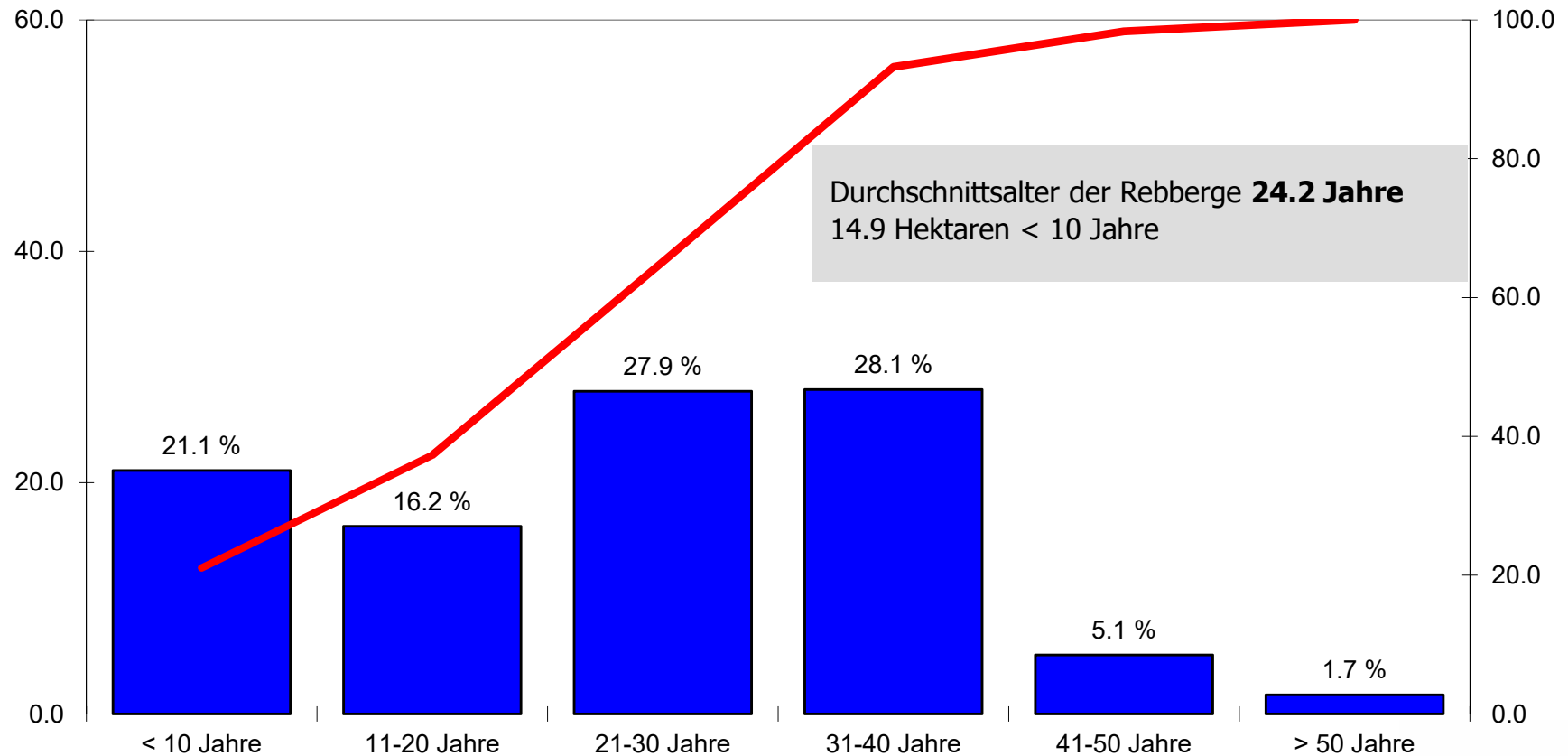
Altersstruktur Syrah



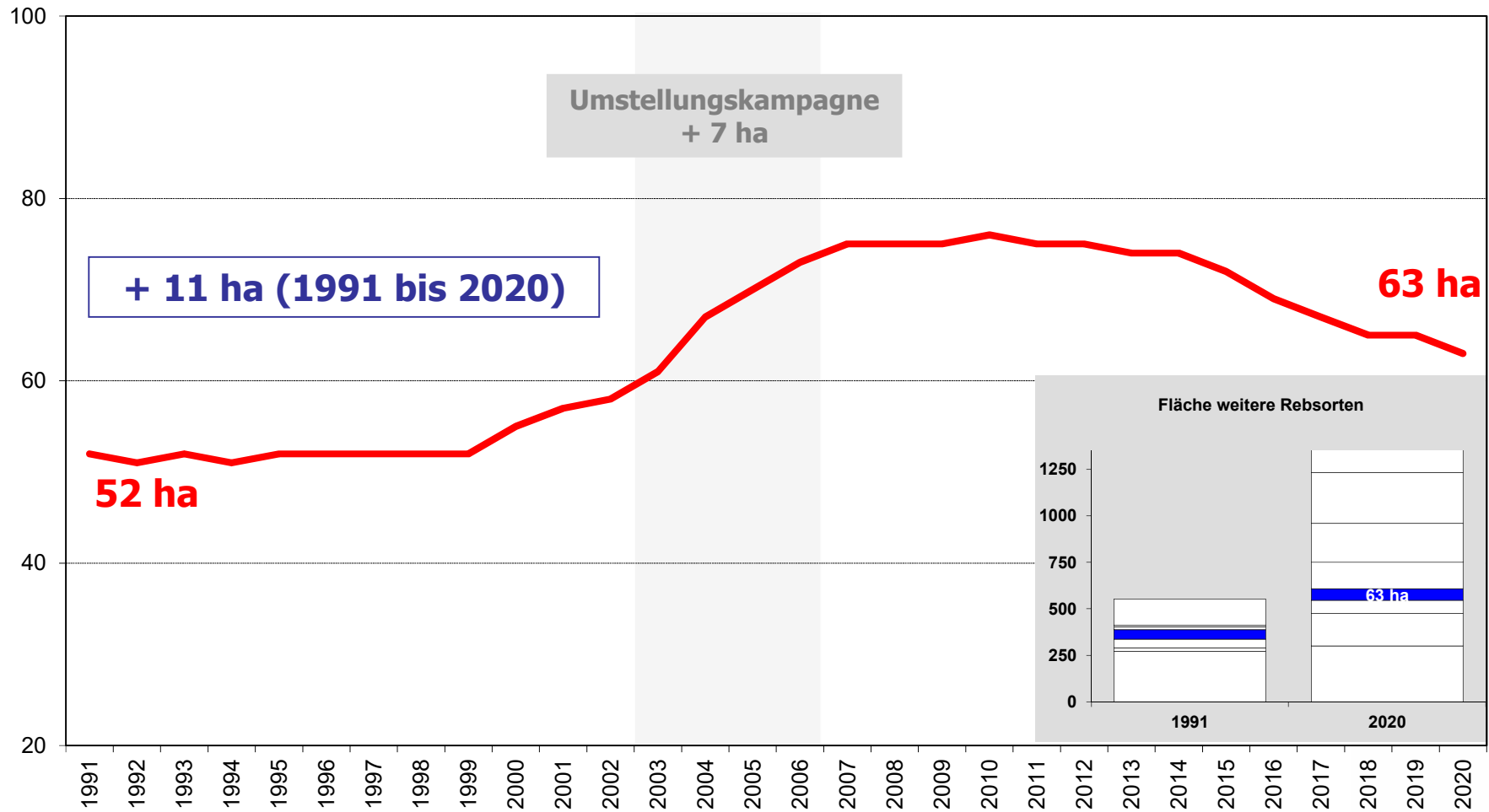
Flächenentwicklung Chardonnay



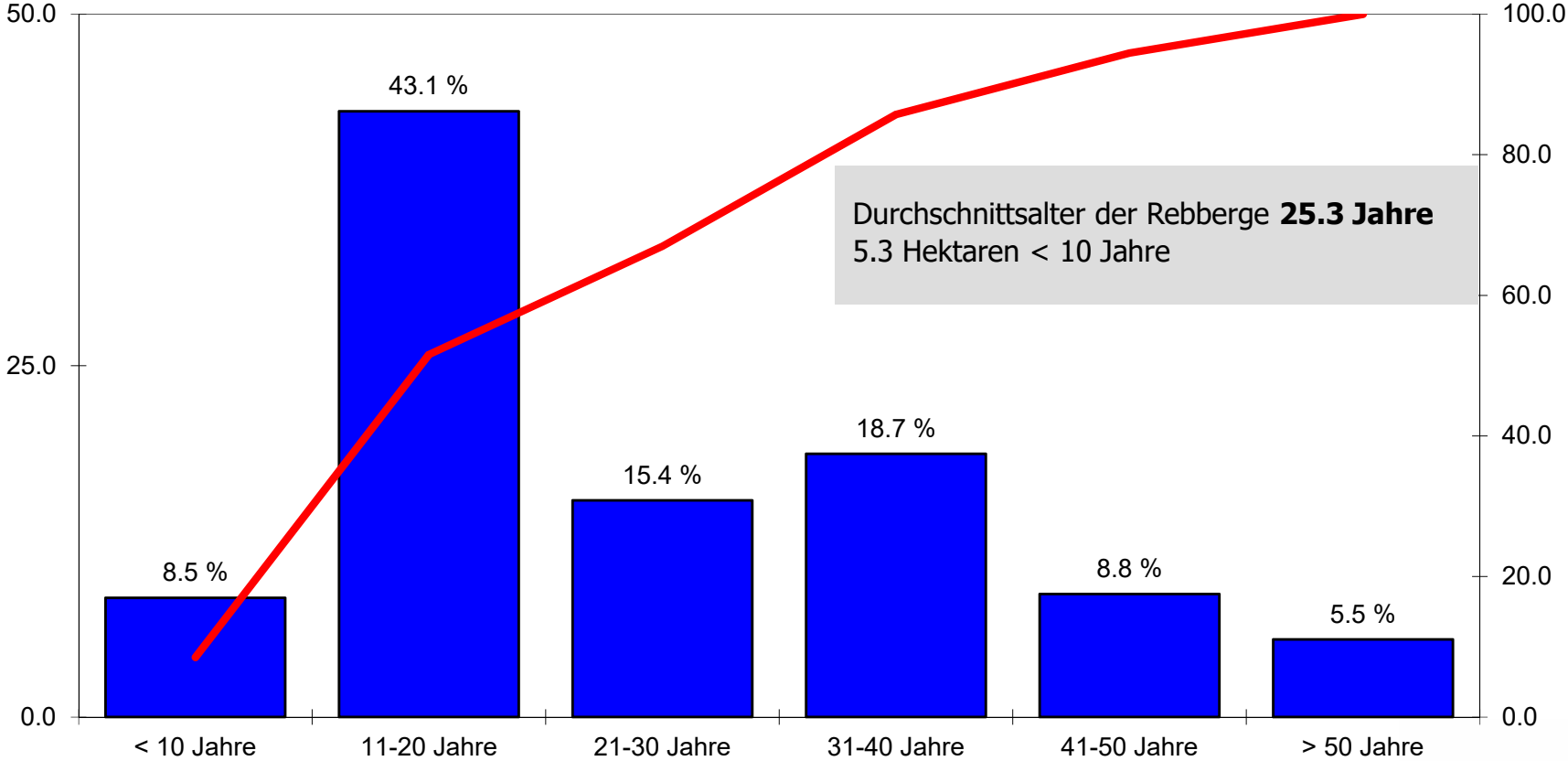
Altersstruktur Chardonnay



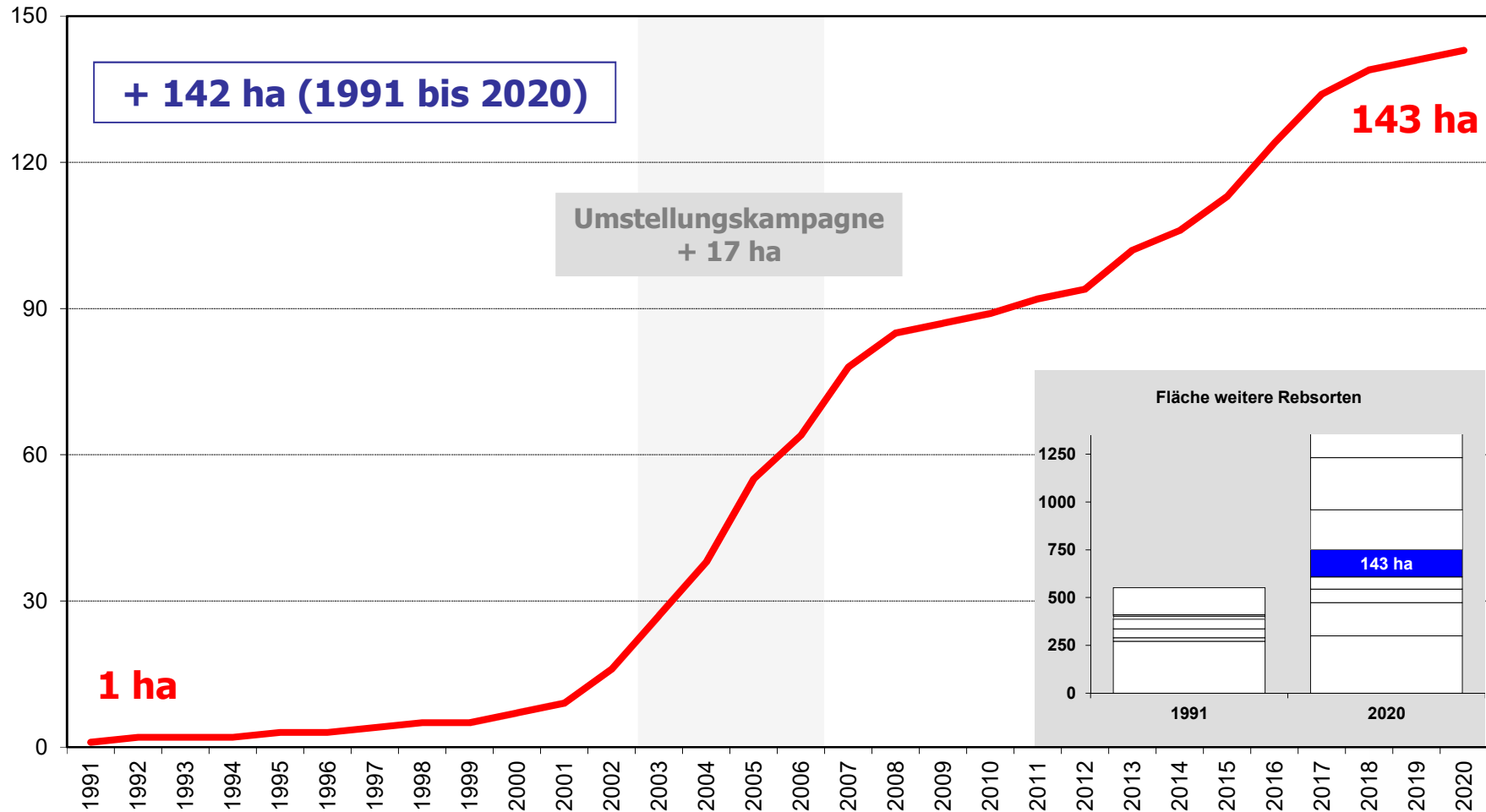
Flächenentwicklung Pinot gris



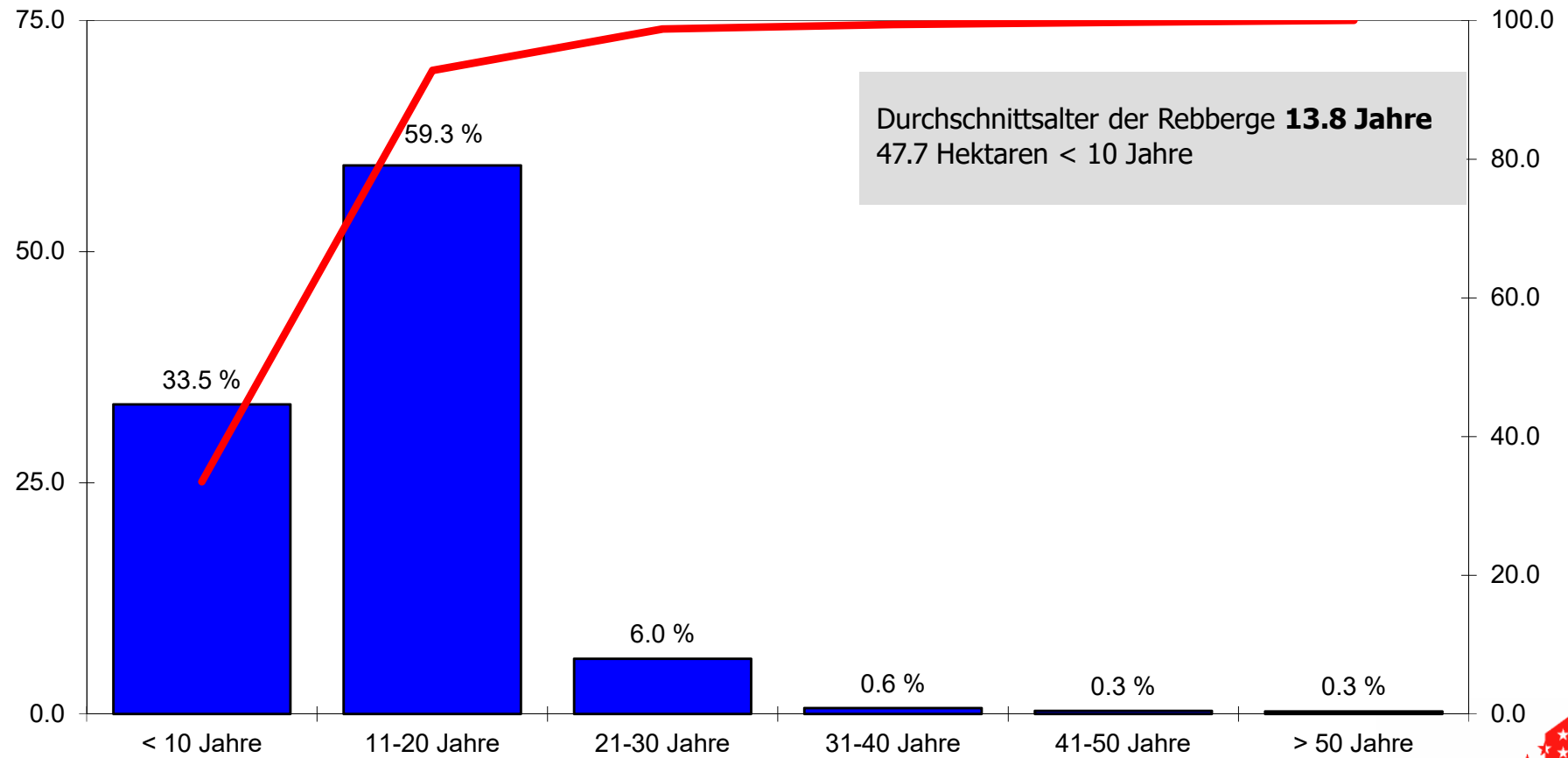
Alterstruktur Pinot gris



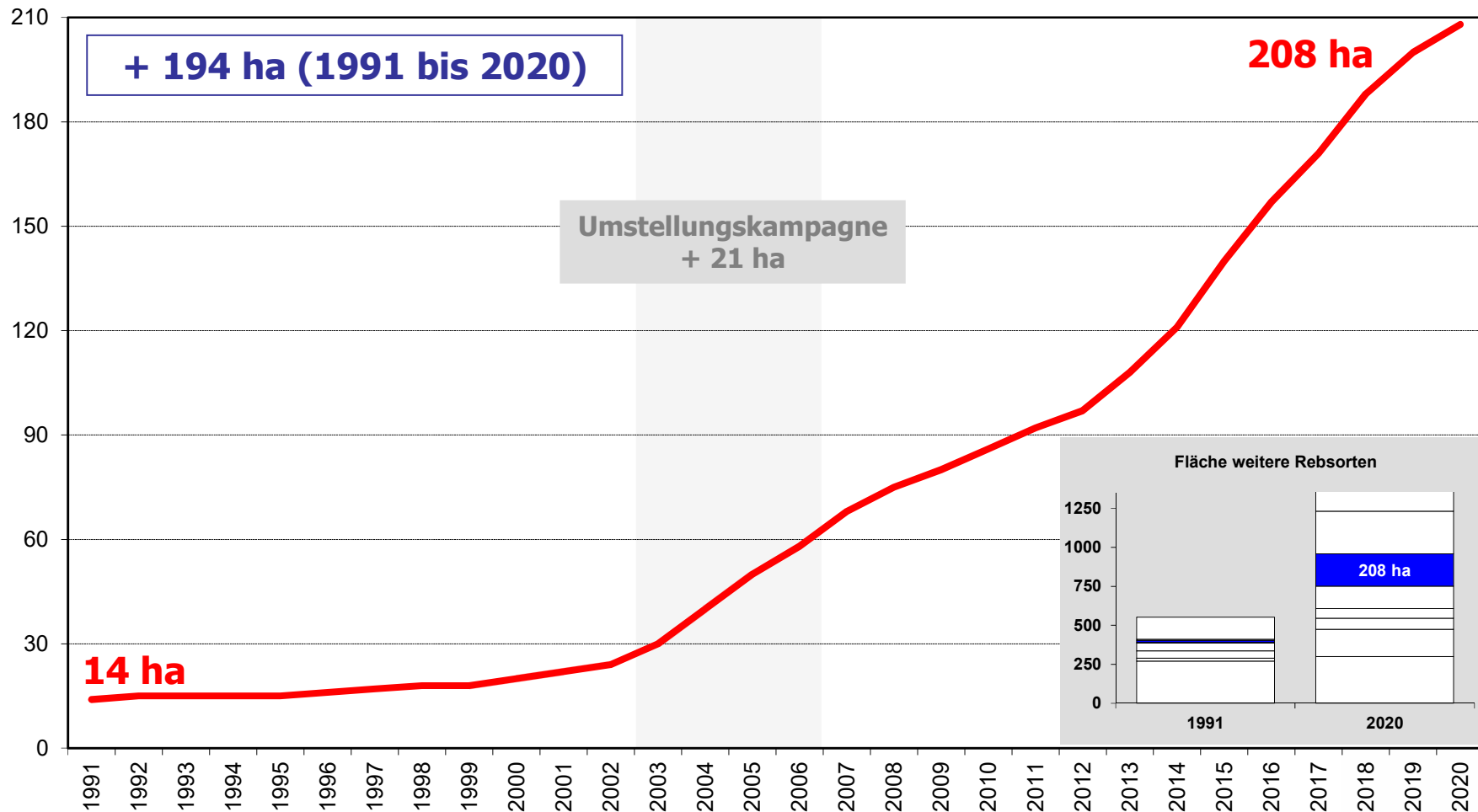
Flächenentwicklung Merlot



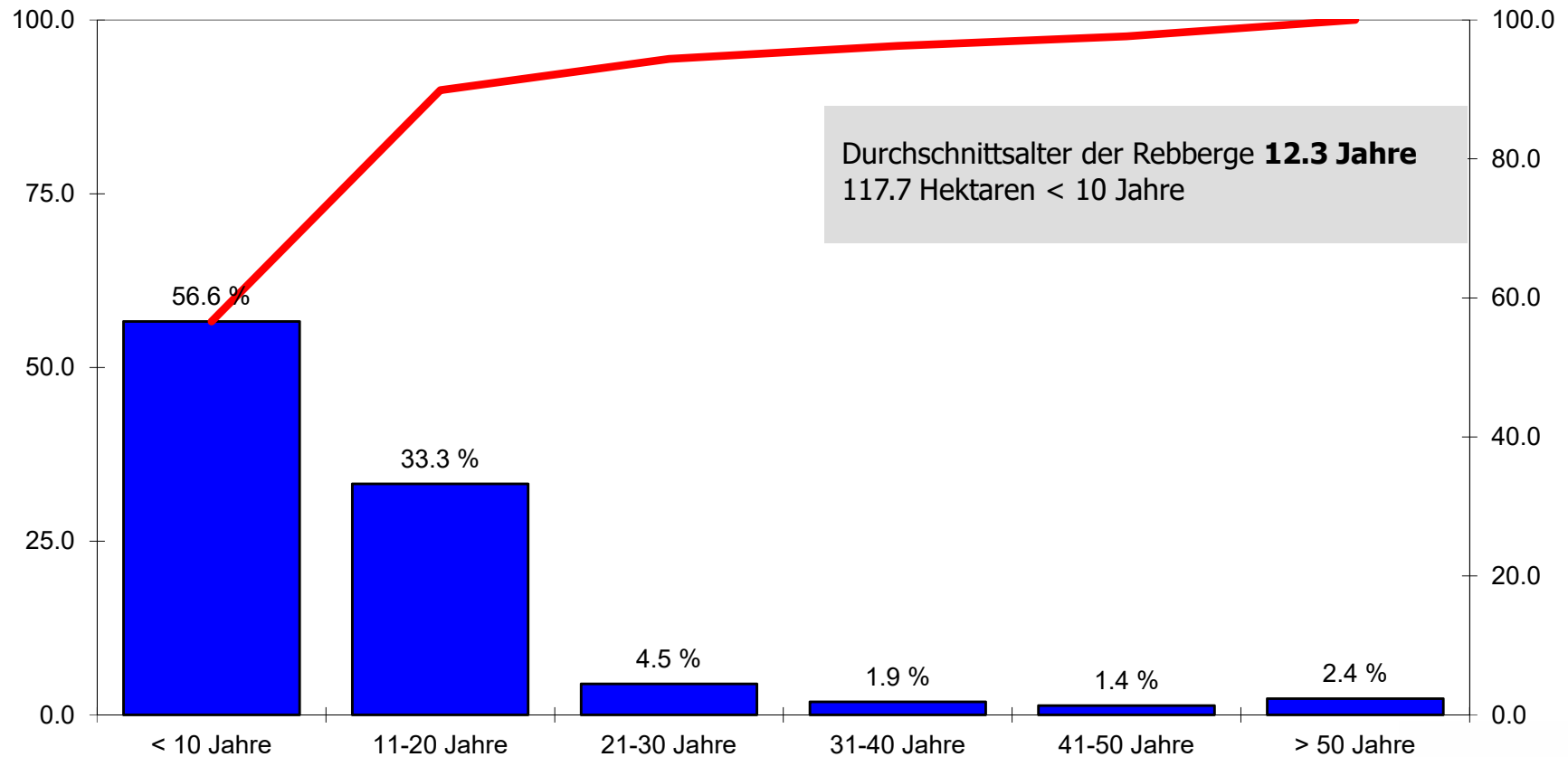
Altersstruktur Merlot



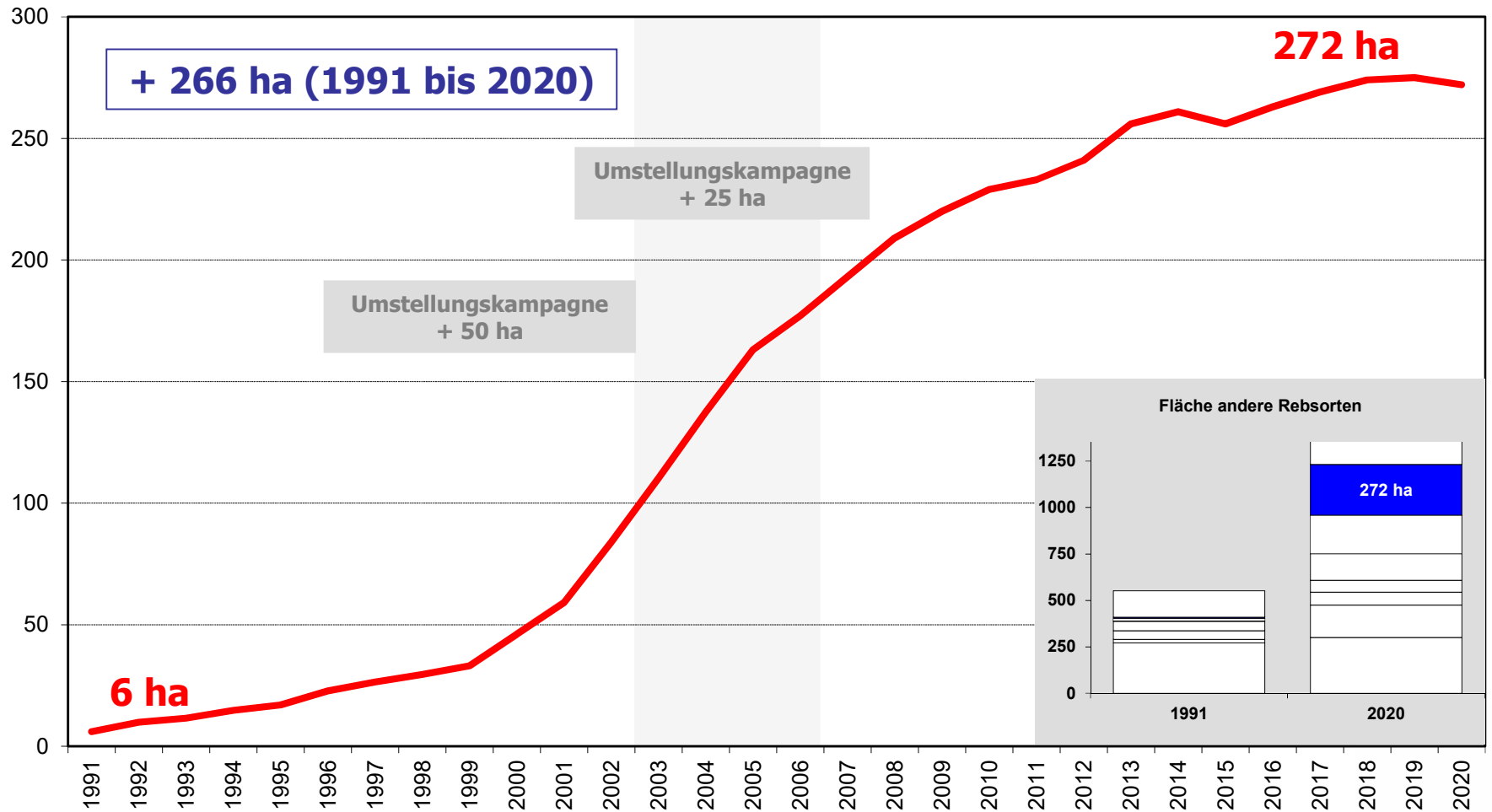
Flächenentwicklung Savagnin blanc



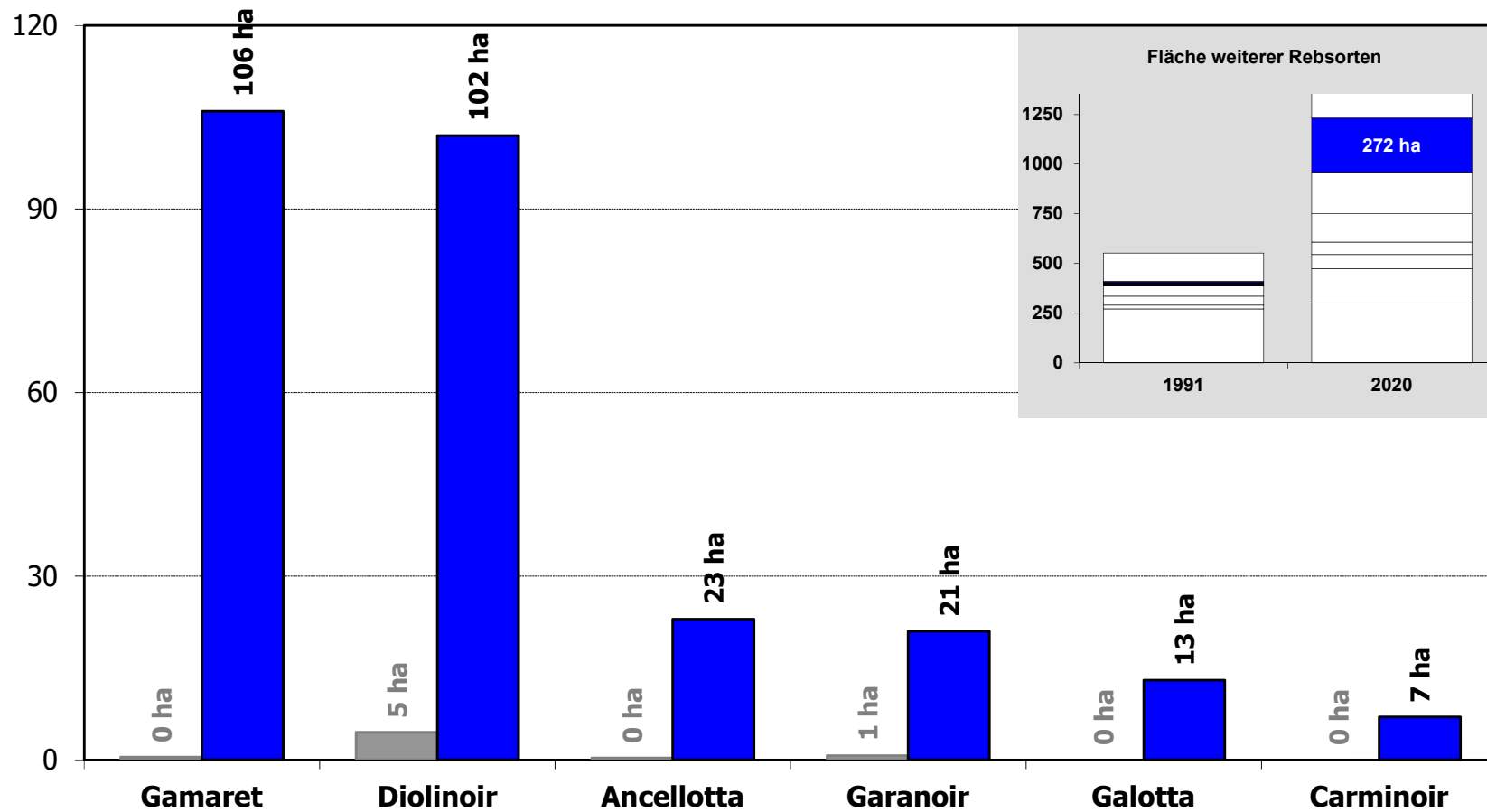
Altersstruktur Savagnin blanc



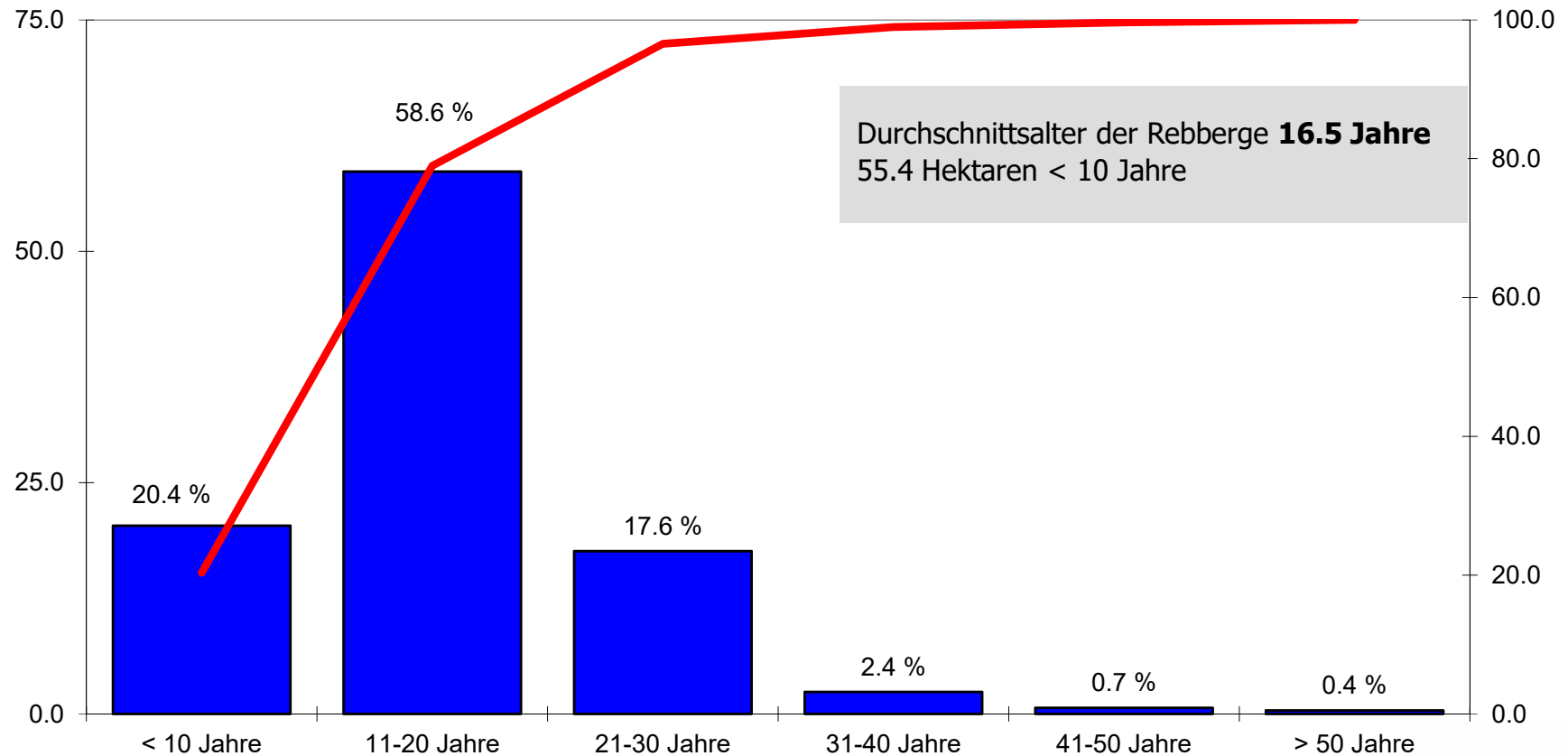
Flächenentwicklung der «Verbesserersorten»



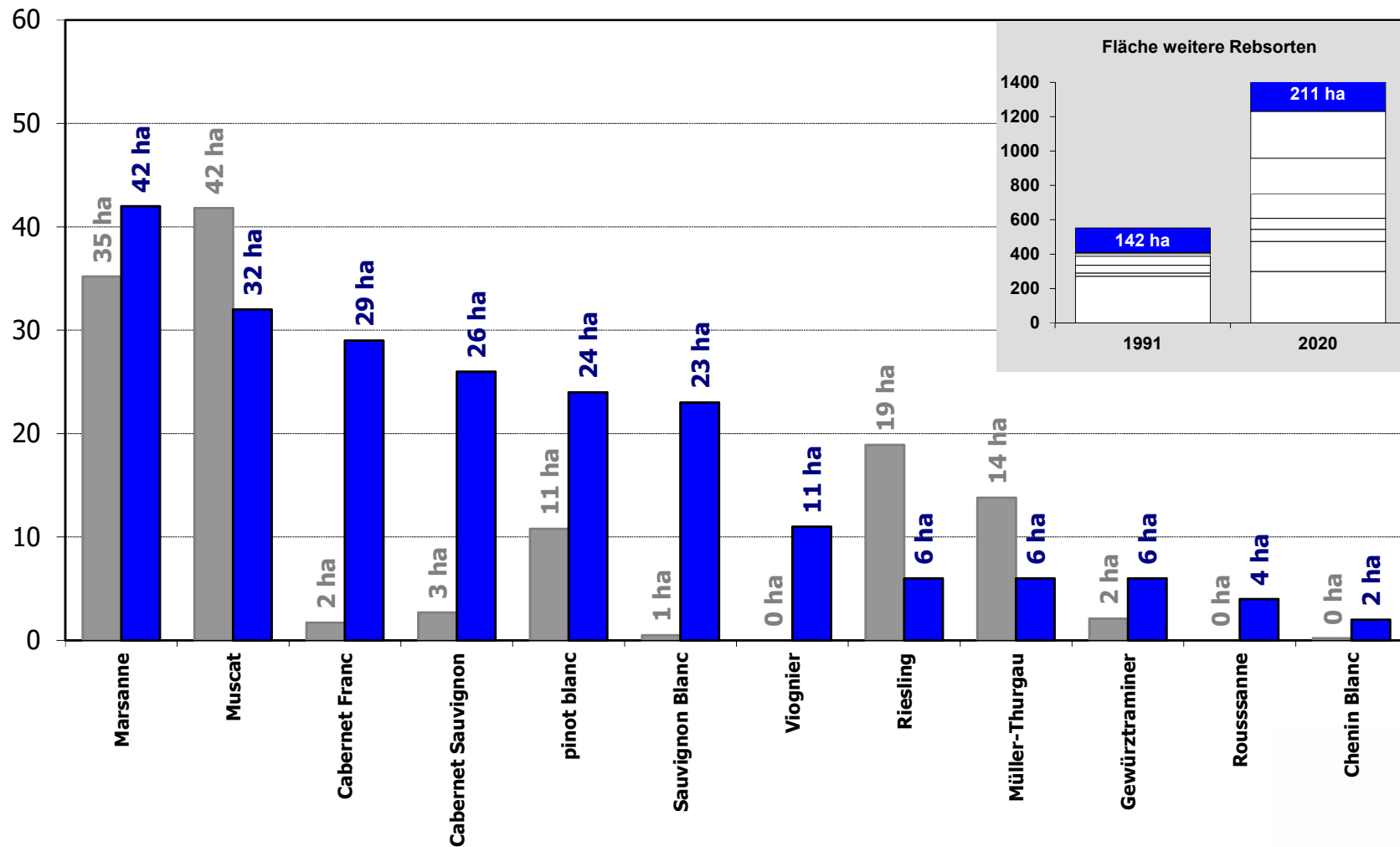
Zusammenfassung der Entwicklung der «Verbesserersorten» (1991 – 2020)



Altersstruktur der «Verbessersorten»



Zusammenfassung der Entwicklung der weiteren Rebsorten (1991 – 2020)



Übersichtstabelle

	1991	2020	Δ	Flächen	Durchschnittsalter	< 10 Jahre ha	< 10 Jahre %
Chasselas	1'875	795	-1'080	16.7%	38.0	59	7.5%
Pinot noir	1'732	1'366	-366	28.7%	32.7	96	7.0%
Gamay	984	507	-477	10.6%	35.9	35	6.9%
Total	4'591	2'668	-1'923	56.0%	34.9	190	7.1%
Sylvaner/Rhin	271	300	29	6.3%	23.4	91	30.2%
Pinot Gris	52	63	11	1.3%	25.3	5	8.4%
Chardonnay	46	71	25	1.5%	24.2	15	21.0%
Humagne rouge	44	143	99	3.0%	21.0	25	17.3%
Arvine	39	234	195	4.9%	16.9	80	34.0%
Syrah	19	174	155	3.7%	19.9	24	13.7%
Cornalin	14	155	141	3.3%	17.1	39	25.0%
Savagnin blanc	14	208	194	4.4%	12.3	118	56.6%
Merlot	1	143	142	3.0%	13.8	48	33.4%
« Améliorateurs »	6	272	266	5.7%	16.5	55	20.4%
Différence	169	333	164	7.0%	19.9	79	23.8%
Total	675	2'096	1'421	44.0%	18.6	578	27.6%
Total Weinberg	5'266	4'764	-502	100%	28.0	768	16.1%