

## COMMUNE DE GRIMISUAT

Demande de mise à l'enquête  
publique pour l'élaboration du  
plan de quartier à

## BESSE - SURGAT

Propriétaires :

M. et Mme Patrick et Danièle  
Chevrier – de Kalbermatten

Conseil communal  
AUTORISÉ le

21 AOUT 2002

Commune  
de Grimisuat

### Contenu du dossier :

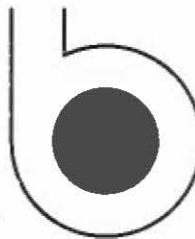
1. Plan de situation à l'échelle du plan cadastral 1:500<sup>ème</sup>  
Extrait de la carte nationale échelle 1:25000<sup>ème</sup>
2. Plan de situation avec implantation cotée des bâtiments entre eux ainsi  
qu'aux limites échelle 1:500<sup>ème</sup>
3. Plan des circulations (automobile et piétonne), des parcs en surface  
et des aménagements extérieurs échelle 1:500<sup>ème</sup>
4. Plan d'infrastructures (eau, égouts, eaux pluviales, électricité) échelle  
1:500<sup>ème</sup>
5. Plan des étapes de réalisation échelle 1:500<sup>ème</sup>
- 6 / 7<sup>1</sup> a) b) c) d) e) Esquisse de l'architecture envisagée, schémas cotés des  
gabarits échelle 1:200<sup>ème</sup>
- 7<sup>2</sup> a) b) c) d) e) Affectation des surfaces échelle 1:200<sup>ème</sup>
8. Coupes et élévations générales sur profils échelle 1:500<sup>ème</sup>
9. Relation du plan de quartier avec l'aménagement local
10. Rapport technique sur les infrastructures
11. Calcul de l'indice d'utilisation du sol
12. Règlement du plan de quartier

**Bernard Ogier - architecte**

Place du Midi 48 - case postale - 1951 Sion  
Tél. : 027 322 76 06 Fax : 027 323 72 19

bernard ogier

architecte sia fsai diplômé epfi  
urbaniste fus designer  
place du midi 48, 1951 sion, suisse  
027 322 76 06 - gsm 079 213 89 24  
fax 027 323 72 19



## COMMUNE DE GRIMISUAT

Demande de mise à l'enquête  
publique pour l'élaboration du  
plan de quartier à

## BESSE - SURGAT

Propriétaires :

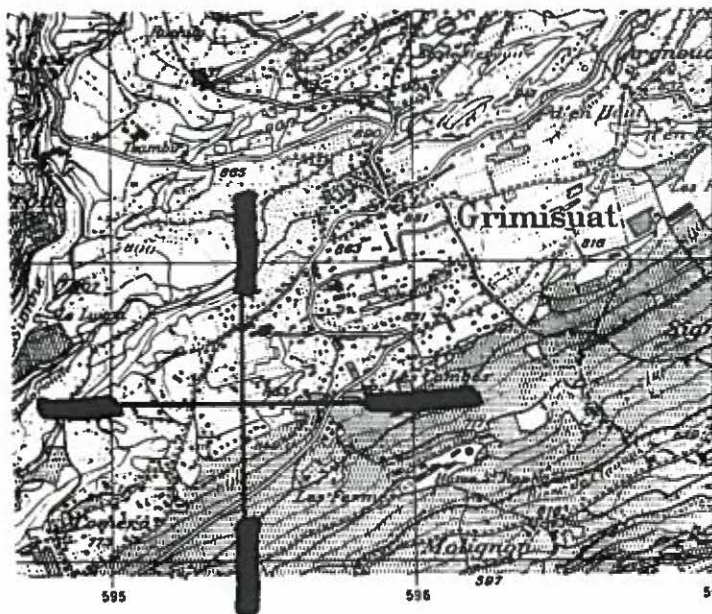
M. et Mme Patrick et Danièle  
Chevrier – de Kalbermatten

Conseil communal  
AUTORISÉ le

21 AOUT 2002

Commune  
de Grimisuat

COORDONNEES C.N. : 595.425 / 122.495



bernard ogier  
architecte sia diplômé epfi  
urbaniste fus designer  
place du midi 48, 1951 sion, suisse



*D. Chevrier*

# COMMUNE DE GRIMISUAT

## PLAN DE SITUATION

Echelle 1:500

Plan N° 12 (f36)

Parcelle N° 1497 (f36/189)	Surface : 1981 m <sup>2</sup>
Parcelle N° 1503 (f36/192)	Surface : 943 m <sup>2</sup>
Parcelle N° 1504 (f36/244)	Surface : 997 m <sup>2</sup>
Parcelle N° 2896 (f36/249)	Surface : 1238 m <sup>2</sup>

Propriété de DE KALBERMATTEN Danielle d'Antoine épouse de Patrick CHEVRIER

Coordonnées de l'ouvrage : Y= 595425 X= 122495

Zone de construction : H20 Besse-Surgat

Indice U: 0.2

Conseil communal  
AUTORISÉ le

21 AOUT 2002

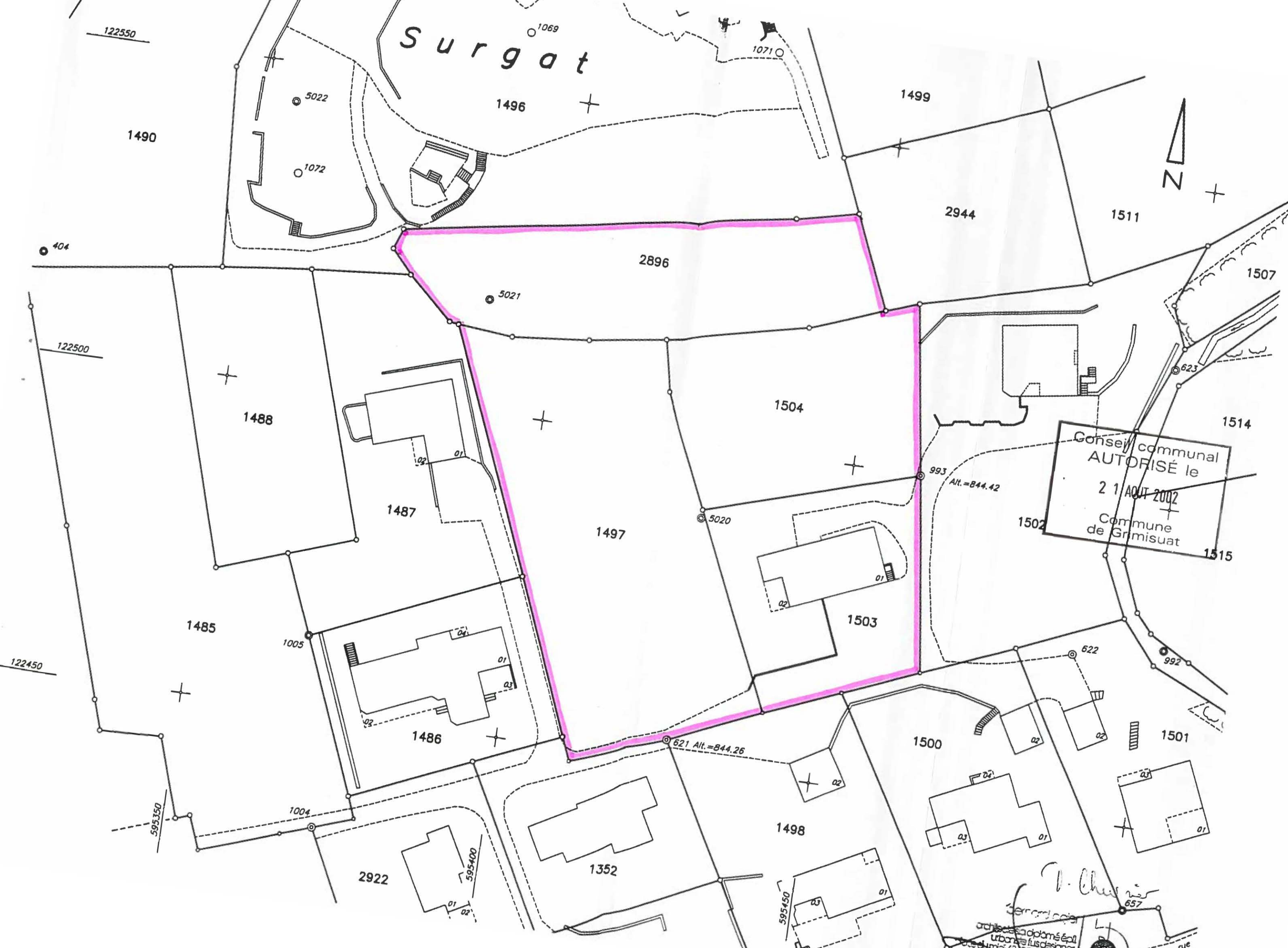
Commune  
de GrimisuatPROPRIETAIRES VOISINS :

1496	(f36/170)	BAUMEISTER Felicitas de Wilhelm épouse de Roland KARG
2944		SAVOY Jean de Georges 1/2 LEMIEUX Gaétane de Moïse 1/2
1502	(f36/193)	MAURY Gilbert de Philippe
1500	(f36/206)	SCHOLZ Klaus H. d'Hugo 1/2 et son épouse BENDER Sigrid Dorotéa d'Eberhard 1/2
1498	(f36/210)	BLEHER Udo Georg de Georg 1/2 et son épouse DIETRICH Elvira de Georg 1/2
1352	(f36/212)	QUINODOZ Guy-Gilbert d'Emile 1/2 et son épouse ROSSIER Valérie de Denis 1/2
1486	(f36/247)	MULLER Claude-Roland de Roger 1/2 DERIVAZ Emmanuelle d'Arsène 1/2
1487	(f36/182)	GILLIOZ Bernard de Cyrille 1/2 et son épouse BAUD Fabienne de Louis 1/2

Sion, le 12 février 2002

 <b>BOMETRES CENTRE SA</b> Rue de la Blancherie 61 1950 Sion tél. 027 323'67'52 fax. 027 323'67'54 E-mail: info@centre.ch	Maître de l'oeuvre:	SERVICE DES TRAVAUX PUBLICS
	Architecte:	

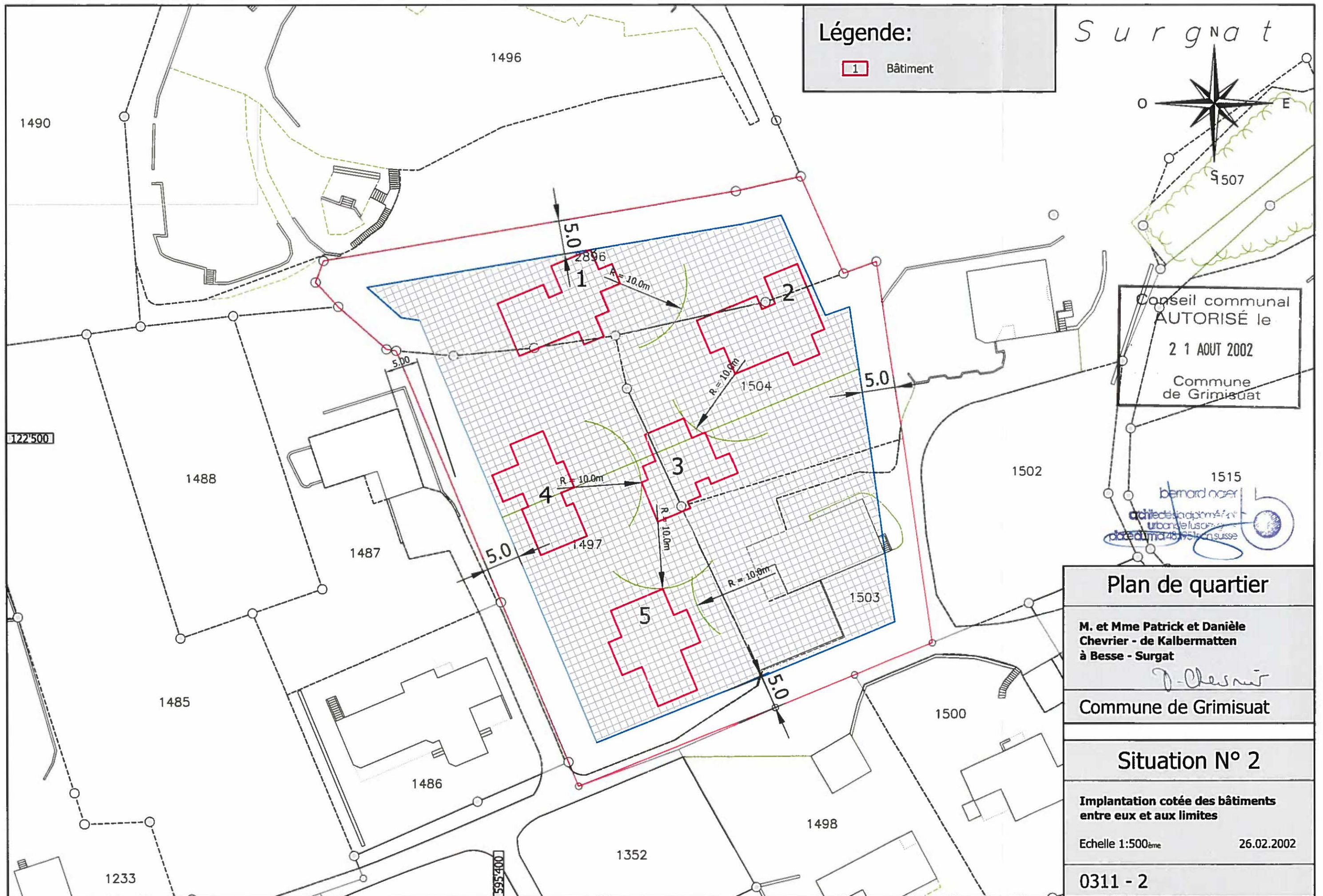
L'utilisation de ce plan à des fins commerciales et pour des publications de tout genre est soumise à autorisation (art.2,2e alinéa, de la loi fédérale du 21 juin 1985 concernant l'établissement de nouvelles cartes nationales). Les infractions peuvent être poursuivies par voie pénale.



Surgat

Conseil communal  
AUTORISÉ le  
21 AOÛT 2002  
Commune de Grimsuat

architecte diplômé par l'Etat  
urbanisme



Légende:

1 Bâtiment

S u r n a t



Conseil communal  
AUTORISÉ le  
21 AOUT 2002  
Commune  
de Grimisuat

1515  
bernard oger  
architecte diplômé  
urbane l'usci  
date du 14.08.1951 en suisse

Plan de quartier

M. et Mme Patrick et Danièle  
Chevrier - de Kalbermatten  
à Besse - Surnat

D. Chesnet

Commune de Grimisuat

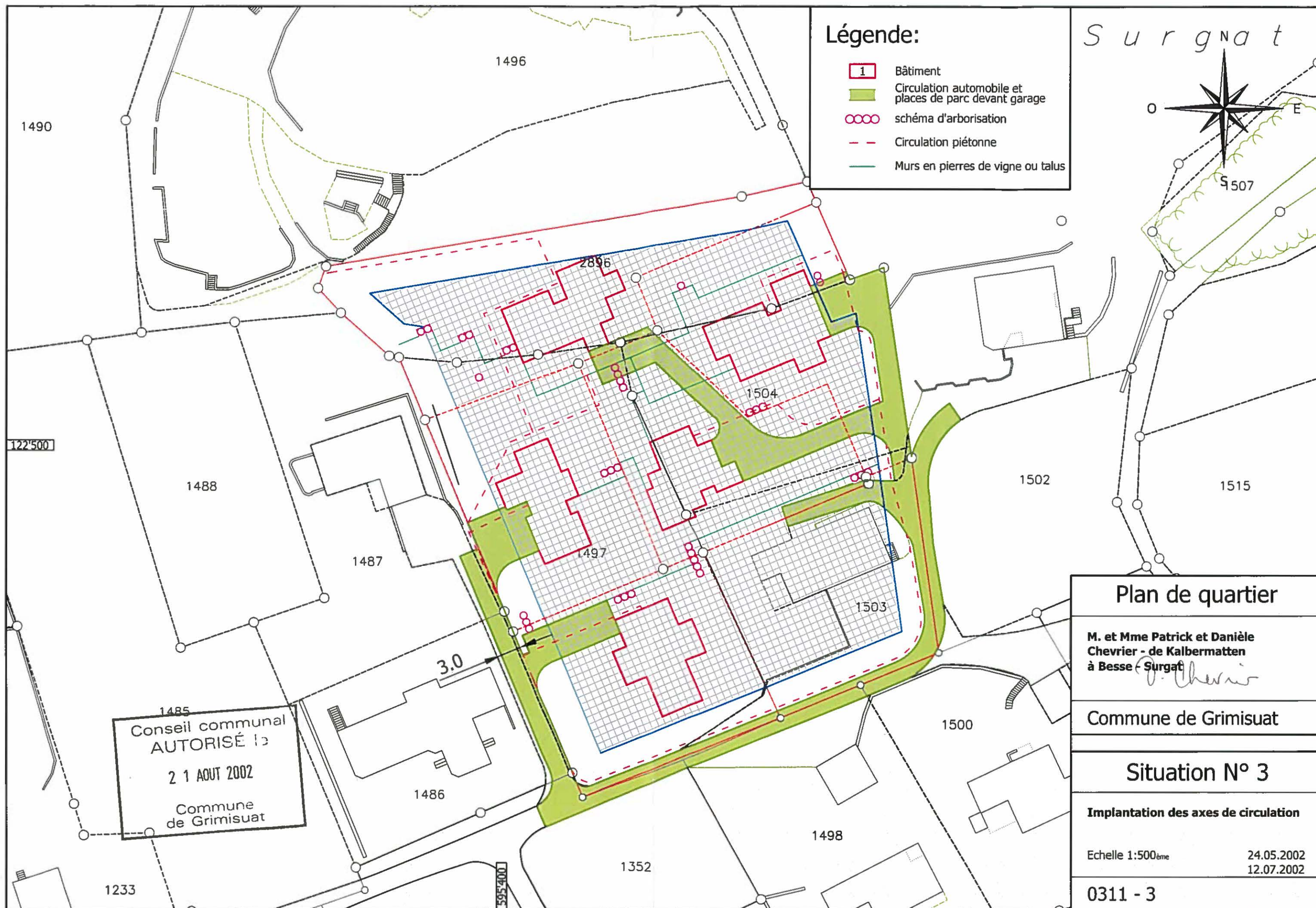
Situation N° 2

Implantation cotée des bâtiments  
entre eux et aux limites

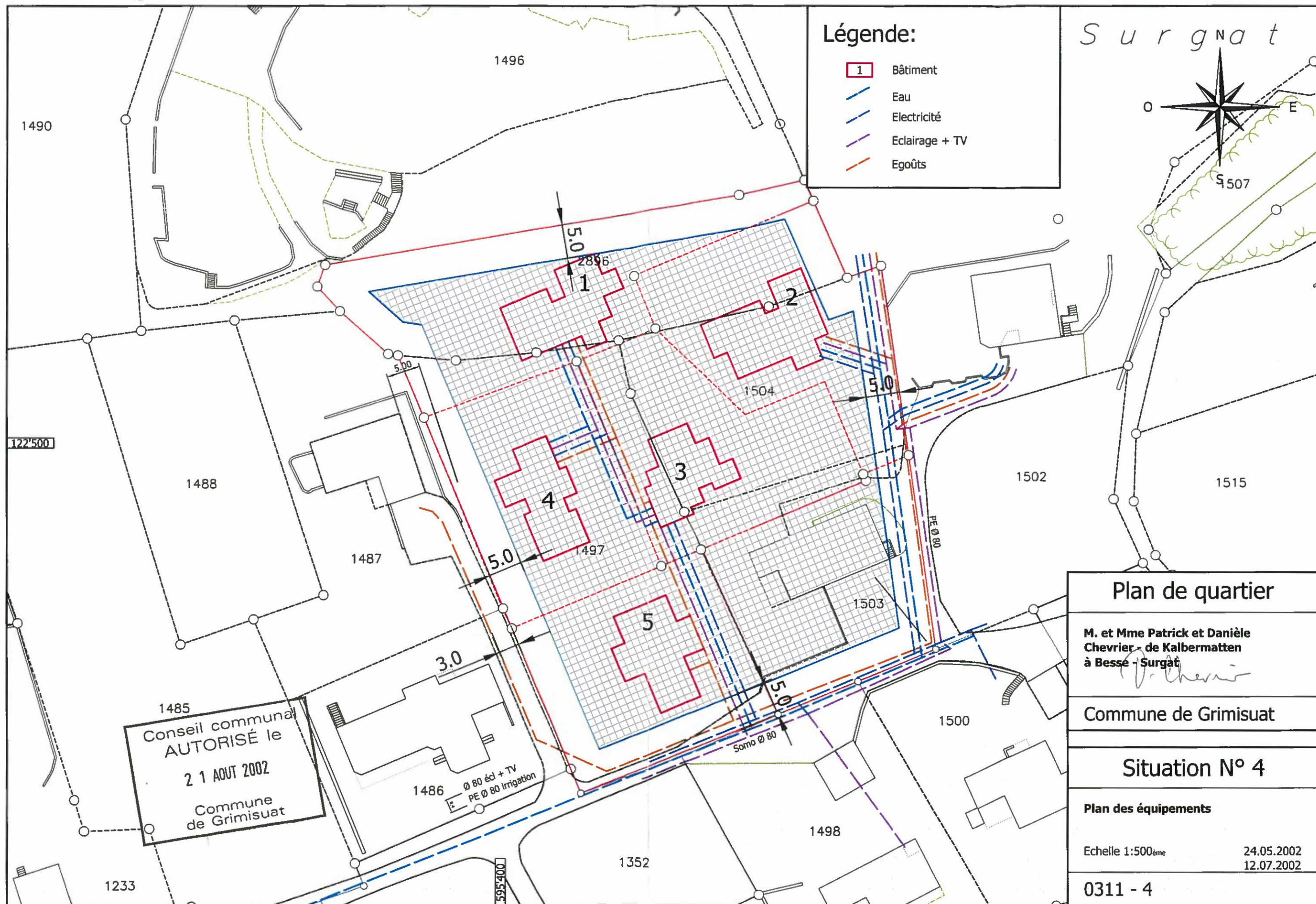
Echelle 1:500ème

26.02.2002

0311 - 2

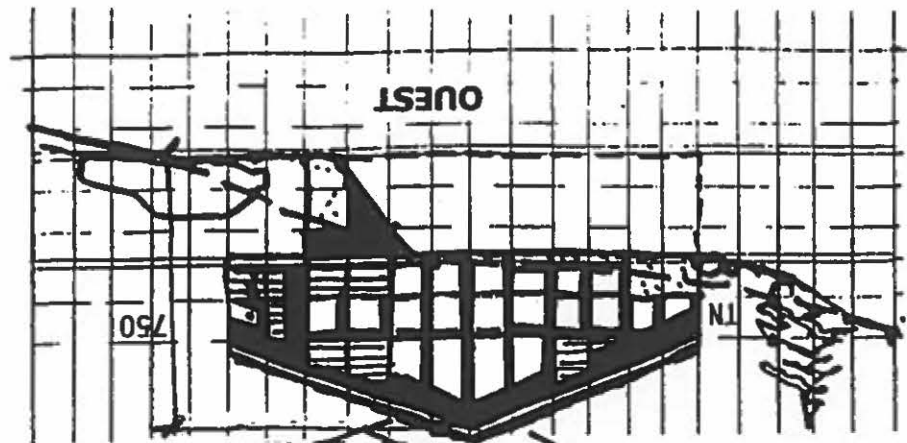








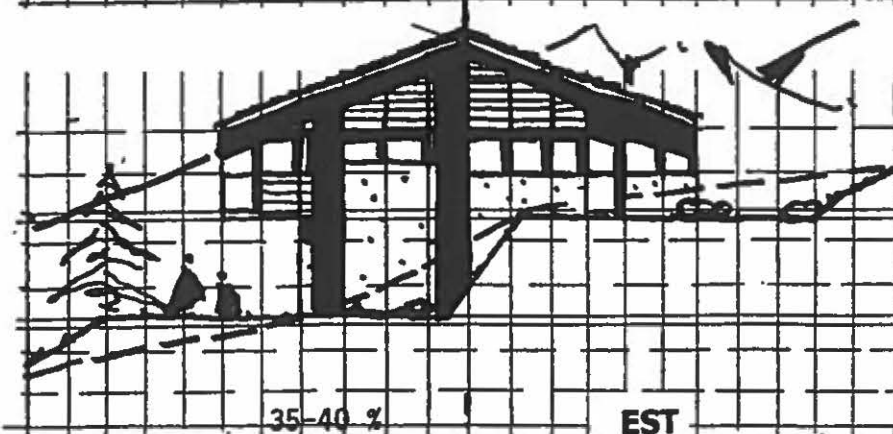
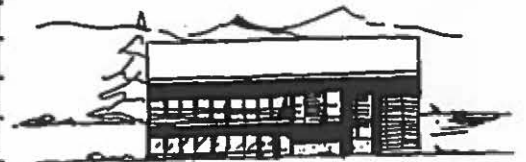
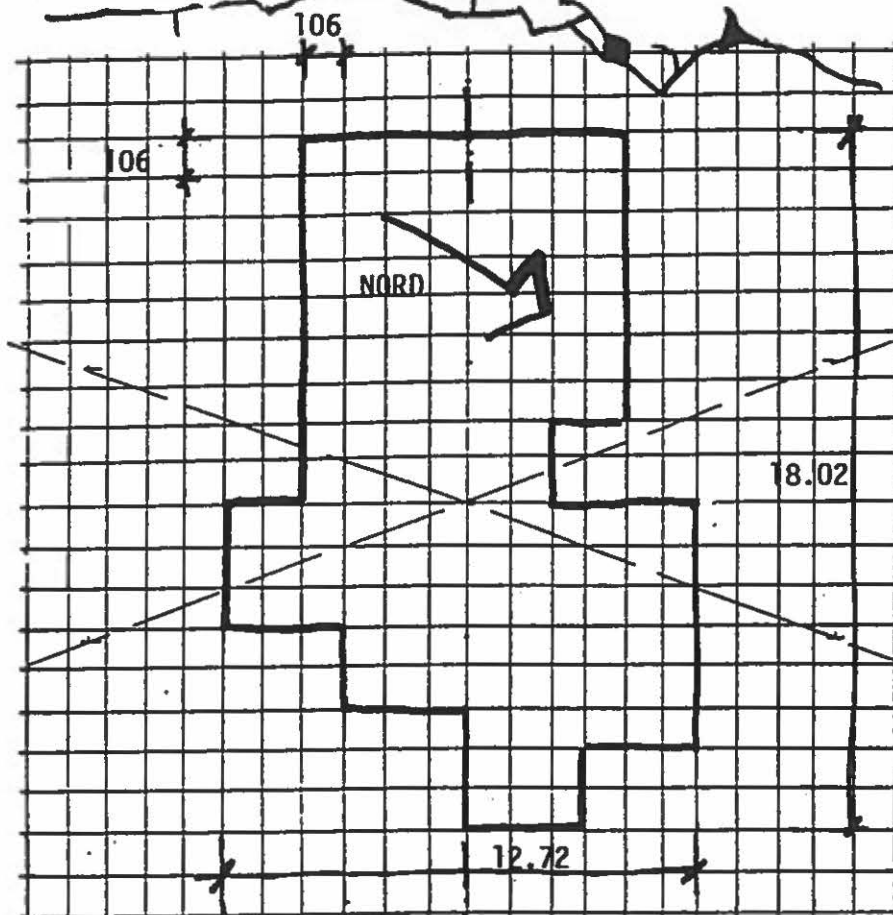




## Plan de quartier

M. et Mme Patrick et Danièle  
Chevrier – de Kalbermatten à  
Besse – Surgat

Commune de Grimisuat



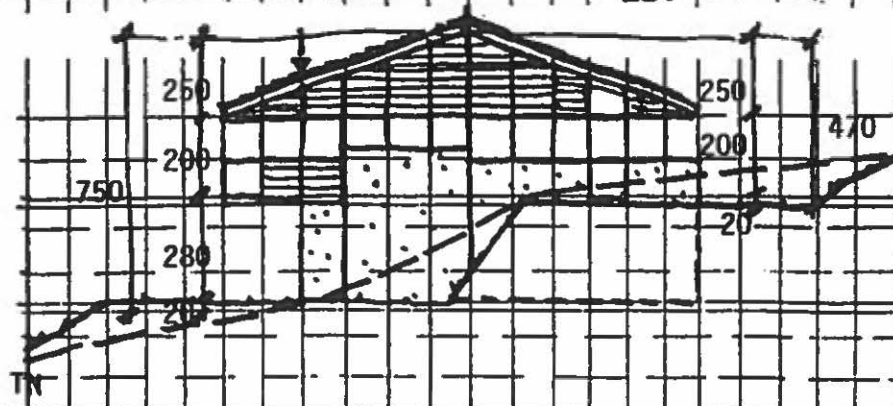
Trame de base :

106 x 106 cm  
= 1,12 m<sup>2</sup>

*D. Chevrier*

Bernard Oger

architecte diplômé ép.  
urbain et designer  
date d'admission 1951 Suisse



## Construction No 1

Faces Est et Ouest Ech. 1:200

Variante esquisses  
face Sud

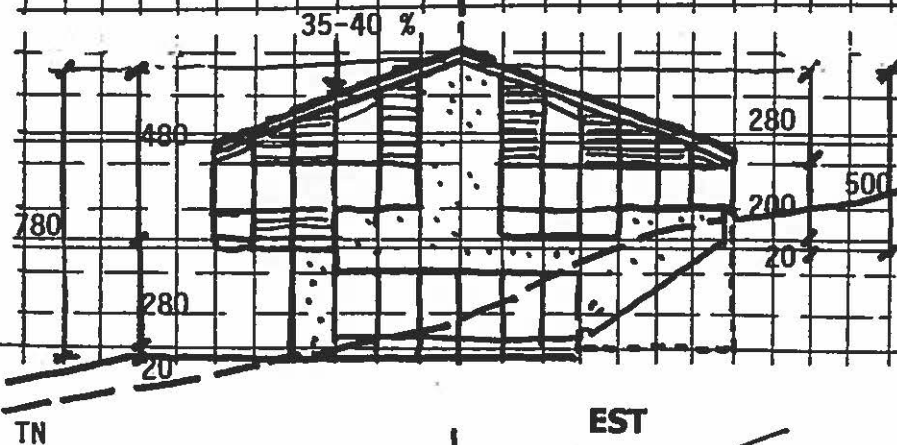
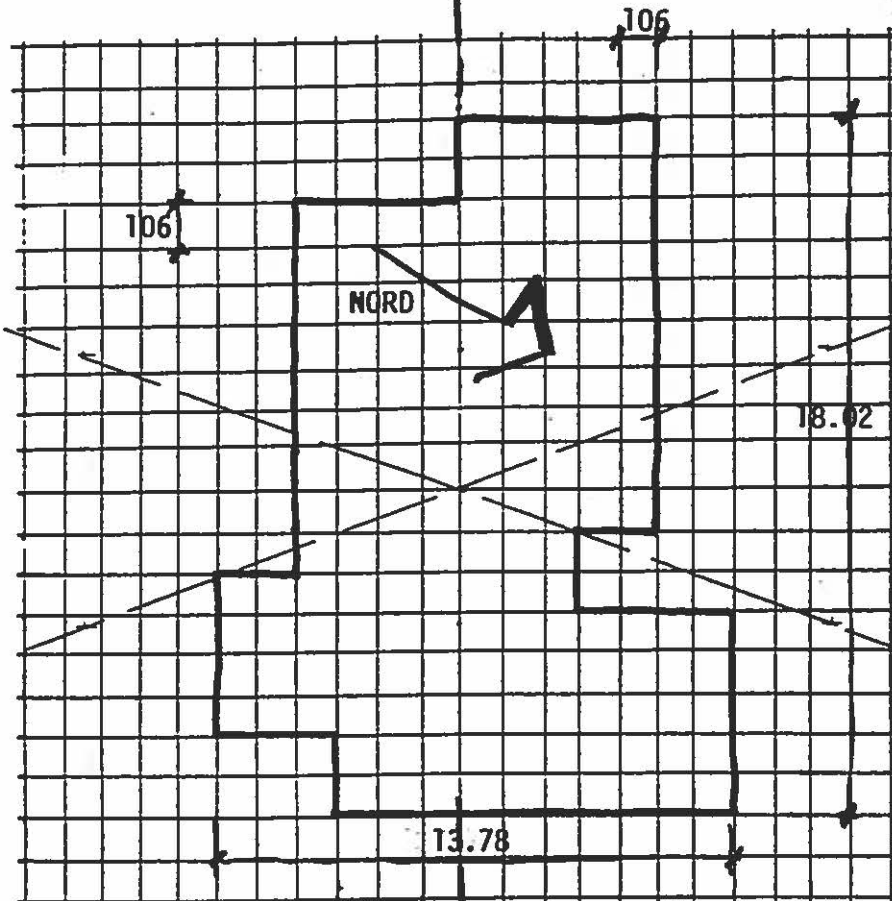
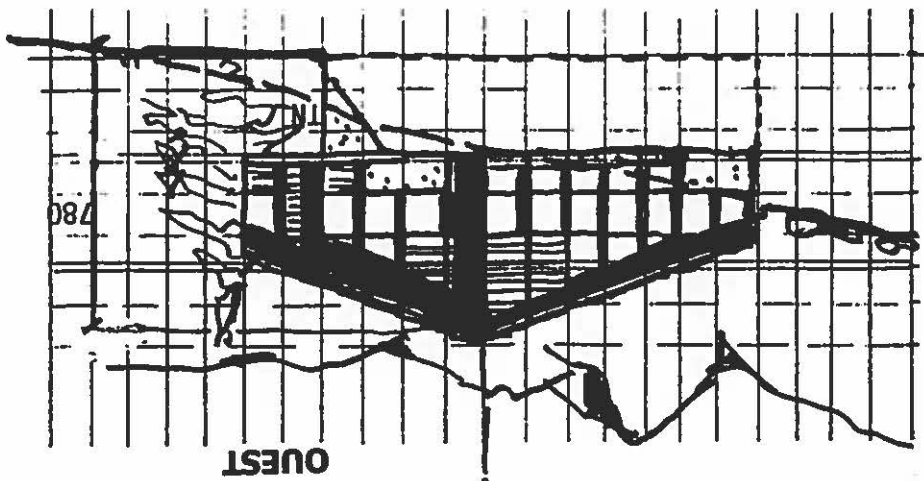
Ech. 1:500  
26.02.2002

0311 - 6 / 7<sup>1</sup> - a)

# Plan de quartier

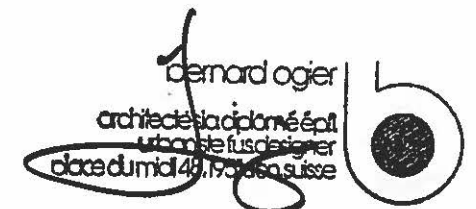
M. et Mme Patrick et Danièle  
Chevrier – de Kalbermatten à  
Besse – Surgat

Commune de Grimisuat



Trame de base :  
106 x 106 cm  
= 1,12 m<sup>2</sup>

*D. Chevrier*



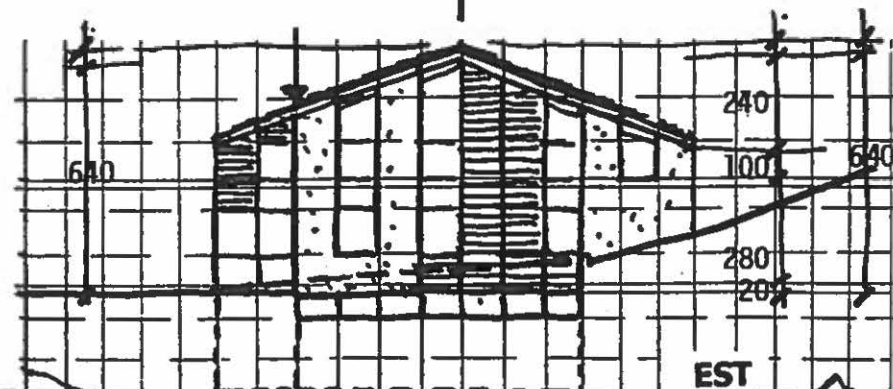
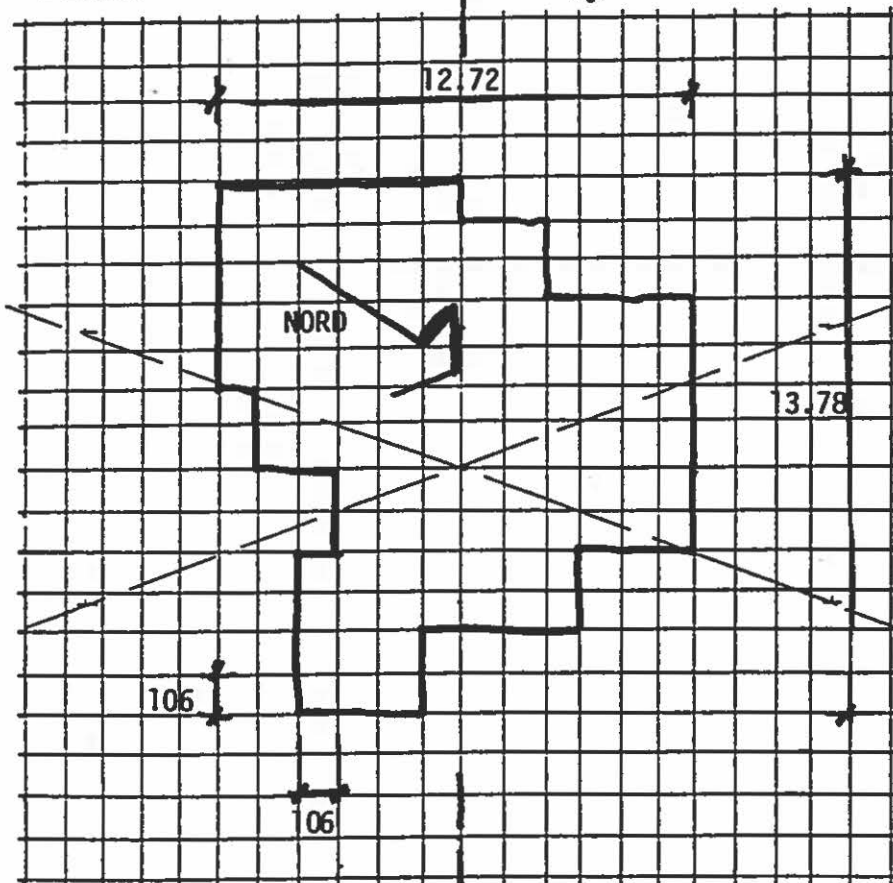
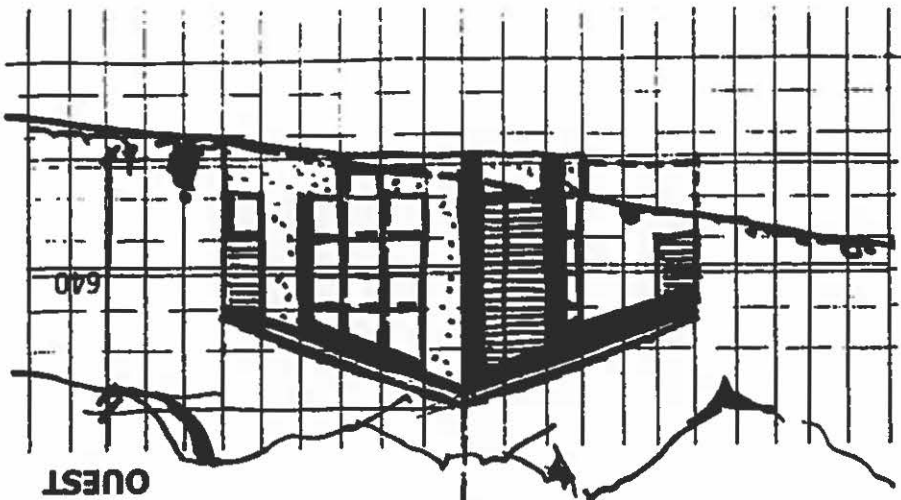
## Construction No 2

Faces Est et Ouest

Echelle 1:200<sup>ème</sup>

26.02.2002

0311 - 6 / 7<sup>1</sup> - b)



# Plan de quartier

M. et Mme Patrick et Danièle  
Chevrier – de Kalbermatten à  
Besse – Surgat

Commune de Grimisuat

Trame de base :  
106 x 106 cm  
= 1,12 m<sup>2</sup>

D. Chevrier

bernard oger

architecte diplômé épiti  
urbaniste et designer  
créé le 14.08.1951 en suisse

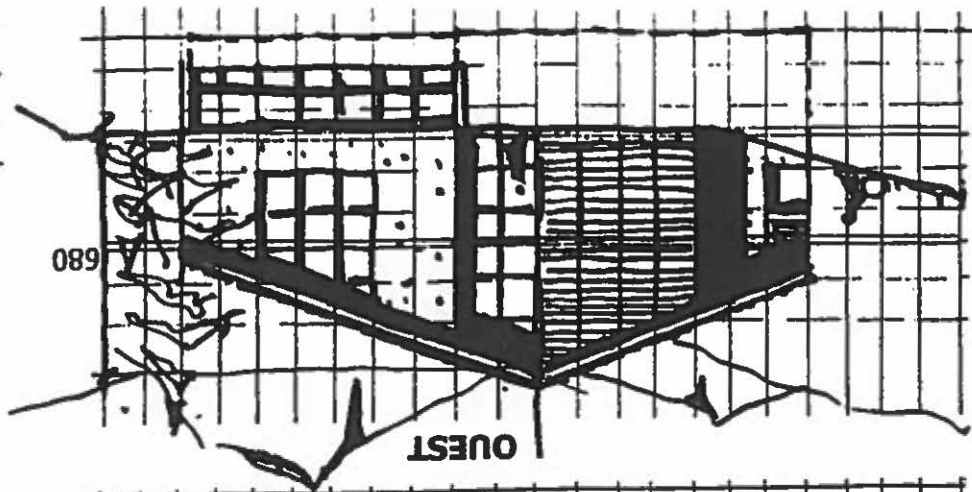


## Construction No 3

Faces Est et Ouest

Echelle 1:200<sup>ème</sup> 26.02.2002

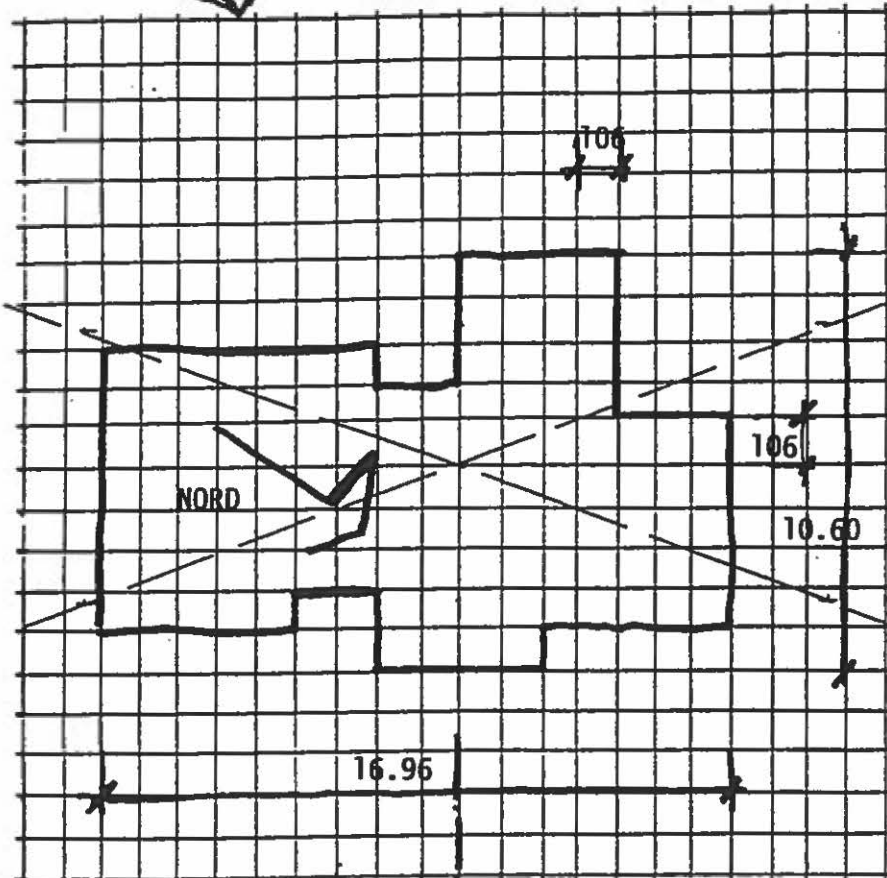
0311 - 6 / 7<sup>1</sup> - c)



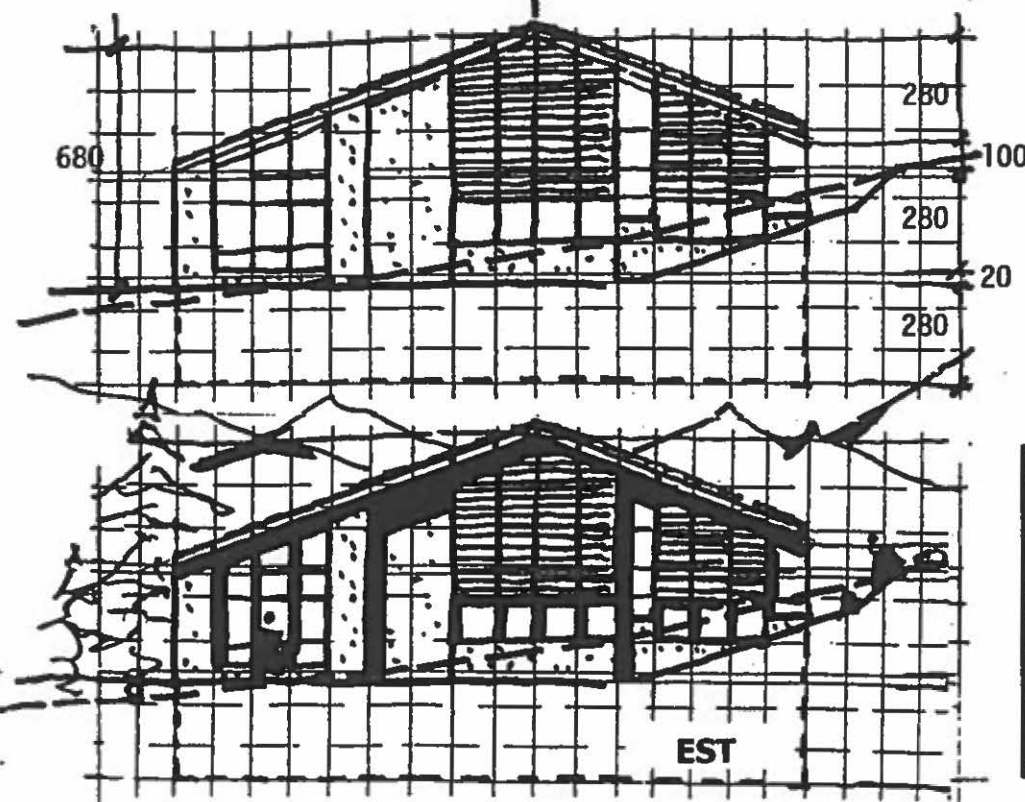
## Plan de quartier

M. et Mme Patrick et Danièle  
Chevrier – de Kalbermatten à  
Besse – Surgat

Commune de Grimisuat



Trame de base :  
106 x 106 cm  
= 1,12 m<sup>2</sup>



*D. Chevrier*

Bernard Roger

architecte diplômé ép  
urbanisme et design  
rue de la Gare 148 1671 Sonvilley



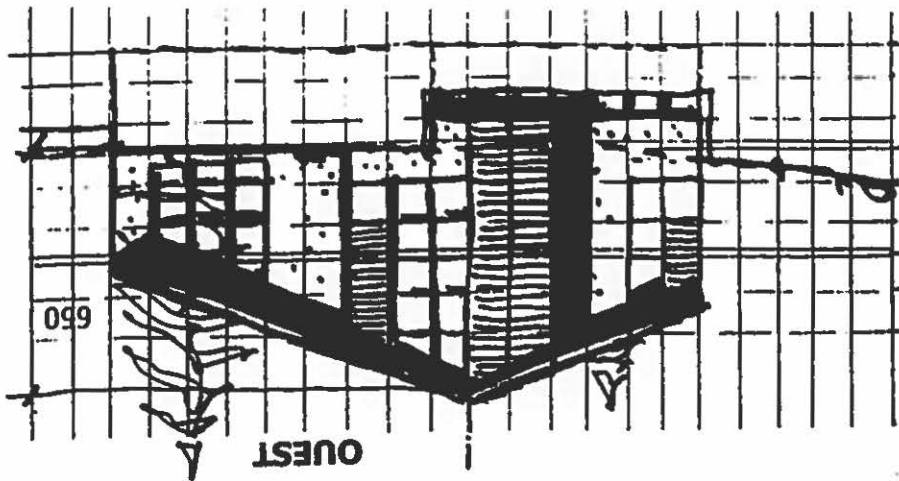
## Construction No 4

Faces Est et Ouest

Echelle 1:200<sup>ème</sup>

26.02.2002

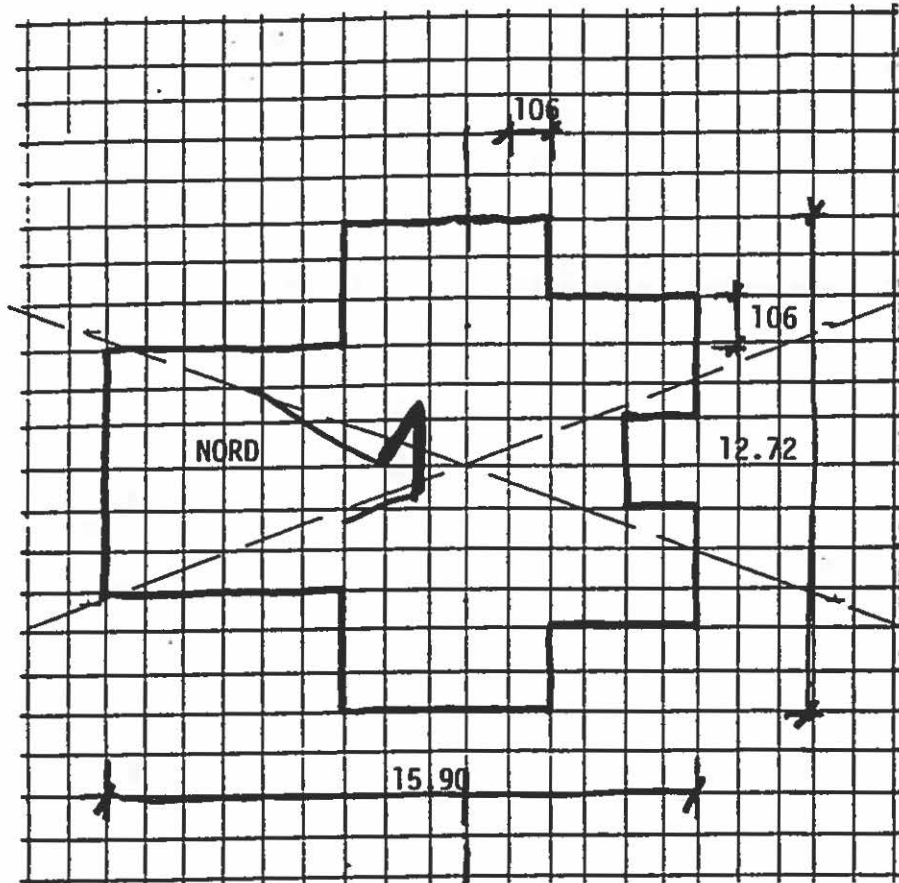
0311 - 6 / 7<sup>1</sup> - d)



## Plan de quartier

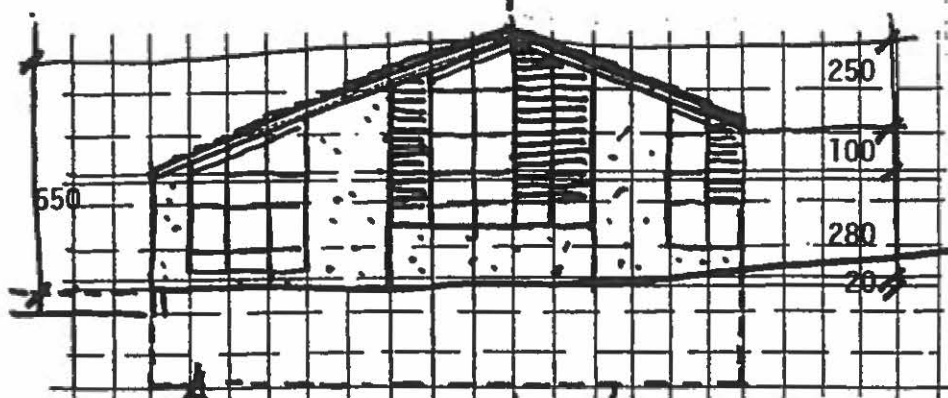
M. et Mme Patrick et Danièle  
Chevrier - de Kalbermatten à  
Besse - Surgat

Commune de Grimisuat



Trame de base :

106 x 106 cm  
= 1,12 m<sup>2</sup>



*D. Chevrier*

bernard ogier

architecte diplômé  
urbaniste / designer  
diplômé de l'enseignement supérieur



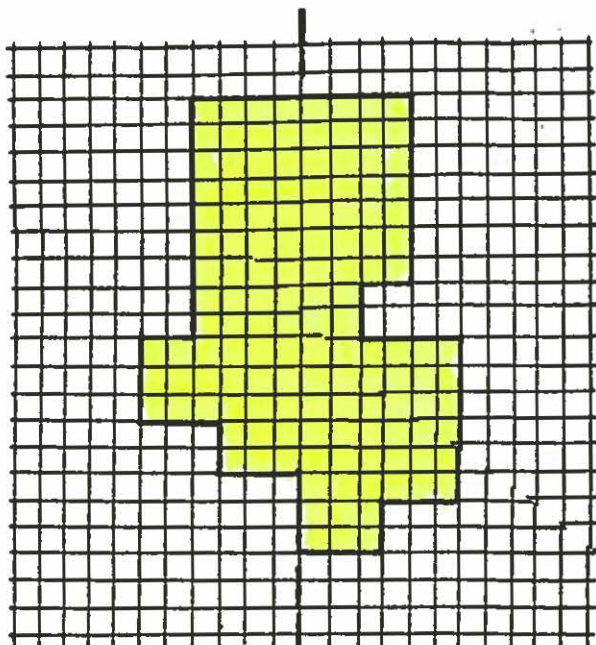
## Construction No 5

Faces Est et Ouest

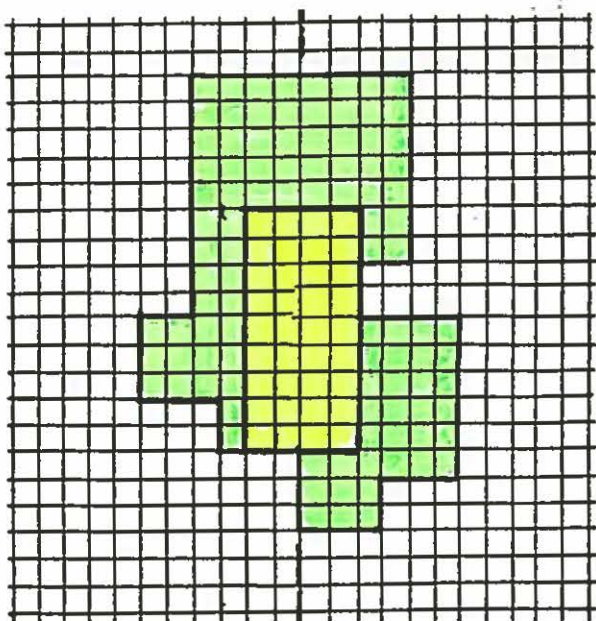
Echelle 1:200<sup>ème</sup>

26.02.2002

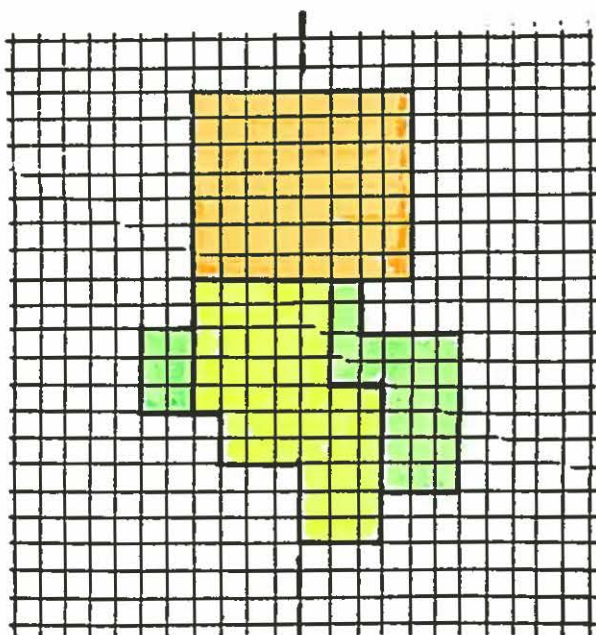
0311 - 6 / 7<sup>1</sup> - e)



REZ



ETAGE




SOUS-SOL

## Plan de quartier

M. et Mme Patrick et Danièle  
Chevrier – de Kalbermatten à  
Besse – Surgat

Commune de Grimisuat

 surface habitable entrant en  
considération dans le cadre de  
l'indice d'utilisation du sol

 garages

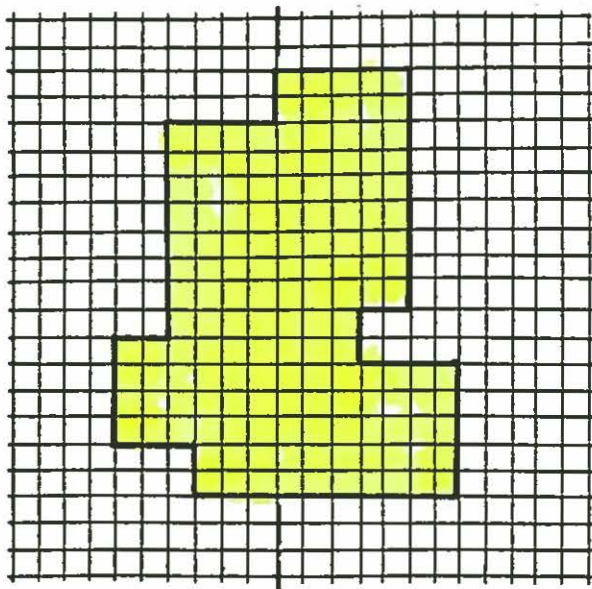
 caves – dépôts

 sous-toiture

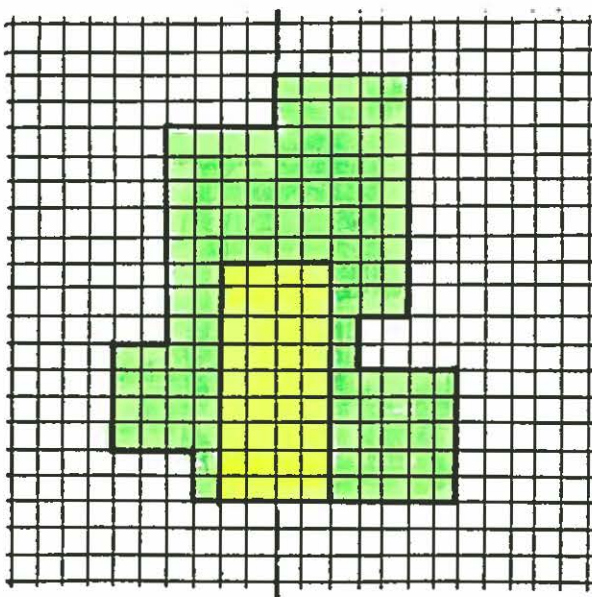


1.06 m. x 1.06 m. = 1.1236 m<sup>2</sup>

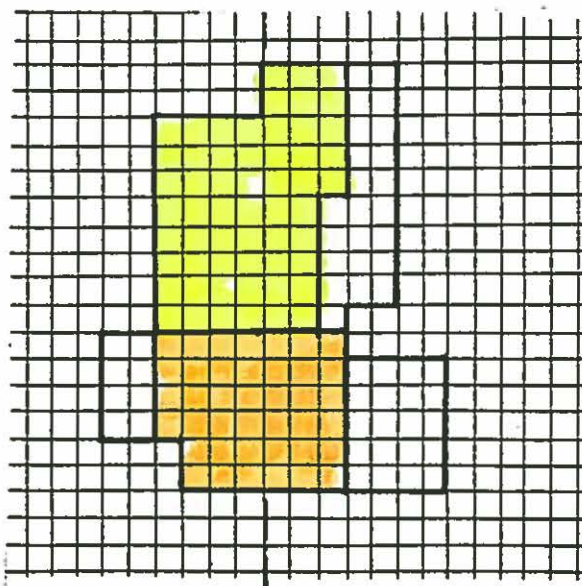
bernard ogier  
architecte diplômé épfl  
urbaniste fus desion  
classé d'urba 43.1.51.52.53.54.55.56.57.58.59.60.61.62.63.64.65.66.67.68.69.70.71.72.73.74.75.76.77.78.79.80.81.82.83.84.85.86.87.88.89.90.91.92.93.94.95.96.97.98.99.100.101.102.103.104.105.106.107.108.109.110.111.112.113.114.115.116.117.118.119.120.121.122.123.124.125.126.127.128.129.130.131.132.133.134.135.136.137.138.139.140.141.142.143.144.145.146.147.148.149.150.151.152.153.154.155.156.157.158.159.160.161.162.163.164.165.166.167.168.169.170.171.172.173.174.175.176.177.178.179.180.181.182.183.184.185.186.187.188.189.190.191.192.193.194.195.196.197.198.199.200.201.202.203.204.205.206.207.208.209.210.211.212.213.214.215.216.217.218.219.220.221.222.223.224.225.226.227.228.229.230.231.232.233.234.235.236.237.238.239.240.241.242.243.244.245.246.247.248.249.250.251.252.253.254.255.256.257.258.259.260.261.262.263.264.265.266.267.268.269.270.271.272.273.274.275.276.277.278.279.280.281.282.283.284.285.286.287.288.289.290.291.292.293.294.295.296.297.298.299.300.301.302.303.304.305.306.307.308.309.310.311.312.313.314.315.316.317.318.319.320.321.322.323.324.325.326.327.328.329.330.331.332.333.334.335.336.337.338.339.340.341.342.343.344.345.346.347.348.349.350.351.352.353.354.355.356.357.358.359.360.361.362.363.364.365.366.367.368.369.370.371.372.373.374.375.376.377.378.379.380.381.382.383.384.385.386.387.388.389.390.391.392.393.394.395.396.397.398.399.400.401.402.403.404.405.406.407.408.409.410.411.412.413.414.415.416.417.418.419.420.421.422.423.424.425.426.427.428.429.430.431.432.433.434.435.436.437.438.439.440.441.442.443.444.445.446.447.448.449.450.451.452.453.454.455.456.457.458.459.460.461.462.463.464.465.466.467.468.469.470.471.472.473.474.475.476.477.478.479.480.481.482.483.484.485.486.487.488.489.490.491.492.493.494.495.496.497.498.499.500.501.502.503.504.505.506.507.508.509.510.511.512.513.514.515.516.517.518.519.520.521.522.523.524.525.526.527.528.529.530.531.532.533.534.535.536.537.538.539.540.541.542.543.544.545.546.547.548.549.550.551.552.553.554.555.556.557.558.559.560.561.562.563.564.565.566.567.568.569.570.571.572.573.574.575.576.577.578.579.580.581.582.583.584.585.586.587.588.589.590.591.592.593.594.595.596.597.598.599.600.601.602.603.604.605.606.607.608.609.610.611.612.613.614.615.616.617.618.619.620.621.622.623.624.625.626.627.628.629.630.631.632.633.634.635.636.637.638.639.640.641.642.643.644.645.646.647.648.649.650.651.652.653.654.655.656.657.658.659.660.661.662.663.664.665.666.667.668.669.670.671.672.673.674.675.676.677.678.679.680.681.682.683.684.685.686.687.688.689.690.691.692.693.694.695.696.697.698.699.700.701.702.703.704.705.706.707.708.709.710.711.712.713.714.715.716.717.718.719.720.721.722.723.724.725.726.727.728.729.730.731.732.733.734.735.736.737.738.739.740.741.742.743.744.745.746.747.748.749.750.751.752.753.754.755.756.757.758.759.760.761.762.763.764.765.766.767.768.769.770.771.772.773.774.775.776.777.778.779.780.781.782.783.784.785.786.787.788.789.790.791.792.793.794.795.796.797.798.799.800.801.802.803.804.805.806.807.808.809.810.811.812.813.814.815.816.817.818.819.820.821.822.823.824.825.826.827.828.829.830.831.832.833.834.835.836.837.838.839.840.841.842.843.844.845.846.847.848.849.850.851.852.853.854.855.856.857.858.859.860.861.862.863.864.865.866.867.868.869.870.871.872.873.874.875.876.877.878.879.880.881.882.883.884.885.886.887.888.889.890.891.892.893.894.895.896.897.898.899.900.901.902.903.904.905.906.907.908.909.910.911.912.913.914.915.916.917.918.919.920.921.922.923.924.925.926.927.928.929.930.931.932.933.934.935.936.937.938.939.940.941.942.943.944.945.946.947.948.949.950.951.952.953.954.955.956.957.958.959.960.961.962.963.964.965.966.967.968.969.970.971.972.973.974.975.976.977.978.979.980.981.982.983.984.985.986.987.988.989.990.991.992.993.994.995.996.997.998.999.1000.1001.1002.1003.1004.1005.1006.1007.1008.1009.1010.1011.1012.1013.1014.1015.1016.1017.1018.1019.1020.1021.1022.1023.1024.1025.1026.1027.1028.1029.1030.1031.1032.1033.1034.1035.1036.1037.1038.1039.1040.1041.1042.1043.1044.1045.1046.1047.1048.1049.1050.1051.1052.1053.1054.1055.1056.1057.1058.1059.1060.1061.1062.1063.1064.1065.1066.1067.1068.1069.1070.1071.1072.1073.1074.1075.1076.1077.1078.1079.1080.1081.1082.1083.1084.1085.1086.1087.1088.1089.1090.1091.1092.1093.1094.1095.1096.1097.1098.1099.1100.1101.1102.1103.1104.1105.1106.1107.1108.1109.1110.1111.1112.1113.1114.1115.1116.1117.1118.1119.1120.1121.1122.1123.1124.1125.1126.1127.1128.1129.1130.1131.1132.1133.1134.1135.1136.1137.1138.1139.1140.1141.1142.1143.1144.1145.1146.1147.1148.1149.1150.1151.1152.1153.1154.1155.1156.1157.1158.1159.1160.1161.1162.1163.1164.1165.1166.1167.1168.1169.1170.1171.1172.1173.1174.1175.1176.1177.1178.1179.1180.1181.1182.1183.1184.1185.1186.1187.1188.1189.1190.1191.1192.1193.1194.1195.1196.1197.1198.1199.1200.1201.1202.1203.1204.1205.1206.1207.1208.1209.1210.1211.1212.1213.1214.1215.1216.1217.1218.1219.1220.1221.1222.1223.1224.1225.1226.1227.1228.1229.1230.1231.1232.1233.1234.1235.1236.1237.1238.1239.1240.1241.1242.1243.1244.1245.1246.1247.1248.1249.1250.1251.1252.1253.1254.1255.1256.1257.1258.1259.1260.1261.1262.1263.1264.1265.1266.1267.1268.1269.1270.1271.1272.1273.1274.1275.1276.1277.1278.1279.1280.1281.1282.1283.1284.1285.1286.1287.1288.1289.1290.1291.1292.1293.1294.1295.1296.1297.1298.1299.1300.1301.1302.1303.1304.1305.1306.1307.1308.1309.1310.1311.1312.1313.1314.1315.1316.1317.1318.1319.1320.1321.1322.1323.1324.1325.1326.1327.1328.1329.1330.1331.1332.1333.1334.1335.1336.1337.1338.1339.1340.1341.1342.1343.1344.1345.1346.1347.1348.1349.1350.1351.1352.1353.1354.1355.1356.1357.1358.1359.1360.1361.1362.1363.1364.1365.1366.1367.1368.1369.1370.1371.1372.1373.1374.1375.1376.1377.1378.1379.1380.1381.1382.1383.1384.1385.1386.1387.1388.1389.1390.1391.1392.1393.1394.1395.1396.1397.1398.1399.1400.1401.1402.1403.1404.1405.1406.1407.1408.1409.1410.1411.1412.1413.1414.1415.1416.1417.1418.1419.1420.1421.1422.1423.1424.1425.1426.1427.1428.1429.1430.1431.1432.1433.1434.1435.1436.1437.1438.1439.1440.1441.1442.1443.1444.1445.1446.1447.1448.1449.1450.1451.1452.1453.1454.1455.1456.1457.1458.1459.1460.1461.1462.1463.1464.1465.1466.1467.1468.1469.1470.1471.1472.1473.1474.1475.1476.1477.1478.1479.1480.1481.1482.1483.1484.1485.1486.1487.1488.1489.1490.1491.1492.1493.1494.1495.1496.1497.1498.1499.1500.1501.1502.1503.1504.1505.1506.1507.1508.1509.1510.1511.1512.1513.1514.1515.1516.1517.1518.1519.1520.1521.1522.1523.1524.1525.1526.1527.1528.1529.1530.1531.1532.1533.1534.1535.1536.1537.1538.1539.1540.1541.1542.1543.1544.1545.1546.1547.1548.1549.1550.1551.1552.1553.1554.1555.1556.1557.1558.1559.1560.1561.1562.1563.1564.1565.1566.1567.1568.1569.1570.1571.1572.1573.1574.1575.1576.1577.1578.1579.1580.1581.1582.1583.1584.1585.1586.1587.1588.1589.1590.1591.1592.1593.1594.1595.1596.1597.1598.1599.1600.1601.1602.1603.1604.1605.1606.1607.1608.1609.1610.1611.1612.1613.1614.1615.1616.1617.1618.1619.1620.1621.1622.1623.1624.1625.1626.1627.1628.1629.1630.1631.1632.1633.1634.1635.1636.1637.1638.1639.1640.1641.1642.1643.1644.1645.1646.1647.1648.1649.1650.1651.1652.1653.1654.1655.1656.1657.1658.1659.1660.1661.1662.1663.1664.1665.1666.1667.1668.1669.1670.1671.1672.1673.1674.1675.1676.1677.1678.1679.1680.1681.1682.1683.1684.1685.1686.1687.1688.1689.1690.1691.1692.1693.1694.1695.1696.1697.1698.1699.1700.1701.1702.1703.1704.1705.1706.1707.1708.1709.1710.1711.1712.1713.1714.1715.1716.1717.1718.1719.1720.1721.1722.1723.1724.1725.1726.1727.1728.1729.1730.1731.1732.1733.1734.1735.1736.1737.1738.1739.1740.1741.1742.1743.1744.1745.1746.1747.1748.1749.1750.1751.1752.1753.1754.1755.1756.1757.1758.1759.1760.1761.1762.1763.1764.1765.1766.1767.1768.1769.1770.1771.1772.1773.1774.1775.1776.1777.1778.1779.1780.1781.1782.1783.1784.1785.1786.1787.1788.1789.1790.1791.1792.1793.1794.1795.1796.1797.1798.1799.1800.1801.1802.1803.1804.1805.1806.1807.1808.1809.1810.1811.1812.1813.1814.1815.1816.1817.1818.1819.1820.1821.1822.1823.1824.1825.1826.1827.1828.1829.1830.1831.1832.1833.1834.1835.1836.1837.1838.1839.1840.1841.1842.1843.1844.1845.1846.1847.1848.1849.1850.1851.1852.1853.1854.1855.1856.1857.1858.1859.1860.1861.1862.1863.1864.1865.1866.1867.1868.1869.1870.1871.1872.1873.1874.1875.1876.1877.1878.1879.1880.1881.1882.1883.1884.1885.1886.1887.1888.1889.1890.1891.1892.1893.1894.1895.1896.1897.1898.1899.1900.1901.1902.1903.1904.1905.1906.1907.1908.1909.1910.1911.1912.1913.1914.1915.1916.1917.1918.1919.1920.1921.1922.1923.1924.1925.1926.1927.1928.1929.1930.1931.1932.1933.1934.1935.1936.1937.1938.1939.1940.1941.1942.1943.1944.1945.1946.1947.1948.1949.1950.1951.1952.1953.1954.1955.1956.1957.1958.1959.1960.1961.1962.1963.1964.1965.1966.1967.1968.1969.1970.1971.1972.1973.1974.1975.1976.1977.1978.1979.1980.1981.1982.1983.1984.1985.1986.1987.1988.1989.1990.1991.1992.1993.1994.1995.1996.1997.1998.1999.2000.2001.2002.2003.2004.2005.2006.2007.2008.2009.2010.2011.2012.2013.2014.2015.2016.2017.2018.2019.2020.2021.2022.2023.2024.2025.2026.2027.2028.2029.2030.2031.2032.2033.2034.2035.2036.2037.2038.2039.2040.2041.2042.2043.2044.2045.2046.2047.2048.2049.2050.2051.2052.2053.2054.2055.2056.2057.2058.2059.2060.2061.2062.2063.2064.2065.2066.2067.2068.2069.2070.2071.2072.2073.2074.2075.2076.2077.2078.2079.2080.2081.2082.2083.2084.2085.2086.2087.2088.2089.2090.2091.2092.2093.2094.2095.2096.2097.2098.2099.2100.2101.2102.2103.2104.2105.2106.2107.2108.2109.2110.2111.2112.2113.2114.2115.2116.2117.2118.2119.2120.2121.2122.2123.2124.2125.2126.2127.2128.2129.2130.2131.2132.2133.2134.2135.2136.2137.2138.2139.2140.2141.2142.2143.2144.2145.2146.2147.2148.2149.2150.2151.2152.2153.2154.2155.2156.2157.2158.2159.2160.2161.2162.2163.2164.2165.2166.2167.2168.2169.2170.2171.2172.2173.2174.2175.2176.2177.2178.2179.2180.2181.2182.2183.2184.2185.2186.2187.2188.2189.2190.2191.2192.2193.2194.2195.2196.2197.2198.2199.2200.2201.2202.2203.2204.2205.2206.2207.2208.2209.2210.2211.2212.2213.2214.2215.2216.2217.2218.2219.2220.2221.2222.2223.2224.2225.2226.2227.2228.2229.2230.2231.2232.2233.2234.2235.2236.2237.2238.2239.2240.2241.2242.2243.2244.2245.2246.2247.2248.2249.2250.2251.2252.2253.2254.2255.2256.2257.2258.2259.2260.2261.2262.2263.2264.2265.2266.2267.2268.2269.2270.2271.2272.2273.2274.2275.2276.2277.2278.2279.2280.2281.2282.2283.2284.2285.2286.2287.2288.2289.2290.2291.2292.2293.2294.2295.2296.2297.2298.2299.2300.2301.2302.2303.2304.2305.2306.2307.2308.2309.2310.2311.2312.2313.2314.2315.2316.2317.2318.2319.2320.2321.2322.2323.2324.2325.2326.2327.2328.2329.2330.2331.2332.2333.2334.2335.2336.2337.2338.2339.2340.2341.2342.2343.2344.2345.2346.2347.2348.2349.2350.2351.2352.2353.2354.2355.2356.2357.2358.2359.2360.2361.2362.2363.2364.2365.2366.2367.2368.2369.2370.2371.2372.2373.2374.2375.2376.2377.2378.2379.2380.2381.2382.2383.2384.2385.2386.2387.2388.2389.2390.2391.2392.2393.2394.2395.2396.2397.2398.2399.2400.2401.2402.2403.2404.2405.2406.2407.2408.2409.2410.2411.2412.2413.2414.2415.2416.2417.2418.2419.2420.2421.2422.2423.2424.2425.2426.2427.2428.2429.2430.2431.2432.2433.2434.2435.2436.2437.2438.2439.2440.2441.2442.2443.2444.2445.2446.2447.2448.2449.2450.2451.2452.2453.2454.2455.2456.2457.2458.2459.2460.2461.2462.2463.2464.2465.2466.2467.2468.2469.2470.2471.2472.2473.2474.2475.2476.2477.2478.2479.2480.2481.2482.2483.2484.2485.2486.2487.2488.2489.2490.2491.2492.2493.2494.2495.2496.2497.2498.2499.2500.2501.2502.2503.2504.2505.2506.2507.2508.2509.2510.2511.2512.2513.2514.2515.2516.2517.2518.2519.2520.2521.2522.2523.2524.2525.2526.2527.2528.2529.2530.2531.2532.2533.2534.2535.2536.253



**REZ**



**ETAGE**



**SOUS-SOL**

## Plan de quartier

M. et Mme Patrick et Danièle  
Chevrier – de Kalbermatten à  
Besse – Surgat

Commune de Grimisuat

 surface habitable entrant en  
considération dans le cadre de  
l'indice d'utilisation du sol

 garages

 caves – dépôts

 sous-toiture



1.06 m. x 1.06 m. = 1.1236 m<sup>2</sup>

bernard ogier  
architecte diplômé épfl  
urbaniste fusi design  
né le 24.08.1951 son site  


## Affectation des surfaces

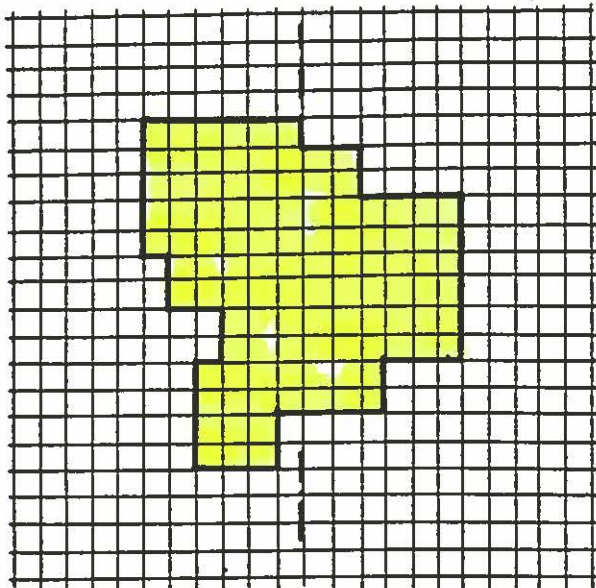
**Construction No 2**

Sans échelle

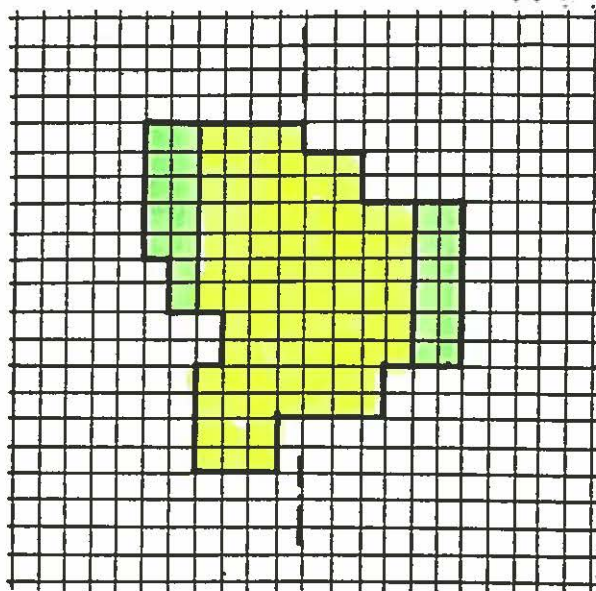
26.02.2002

0311 – 7<sup>2</sup> – b)

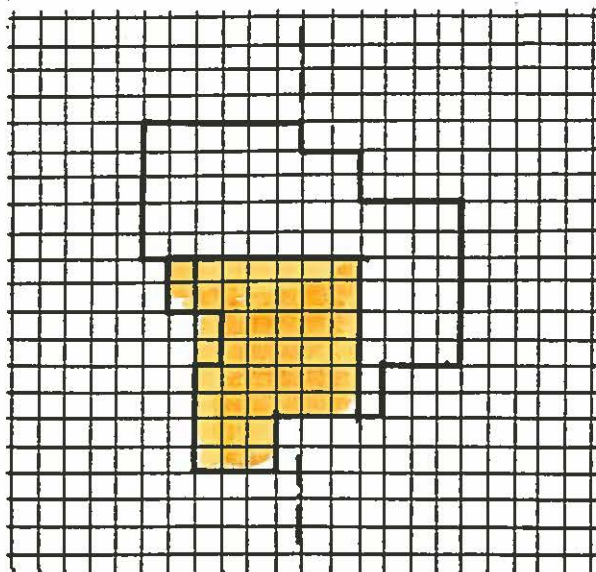
D. Chevrier



**REZ**








**ETAGE**




**SOUS-SOL**

<b>Plan de quartier</b>
M. et Mme Patrick et Danièle Chevrier – de Kalbermatten à Besse – Surgat
Commune de Grimisuat

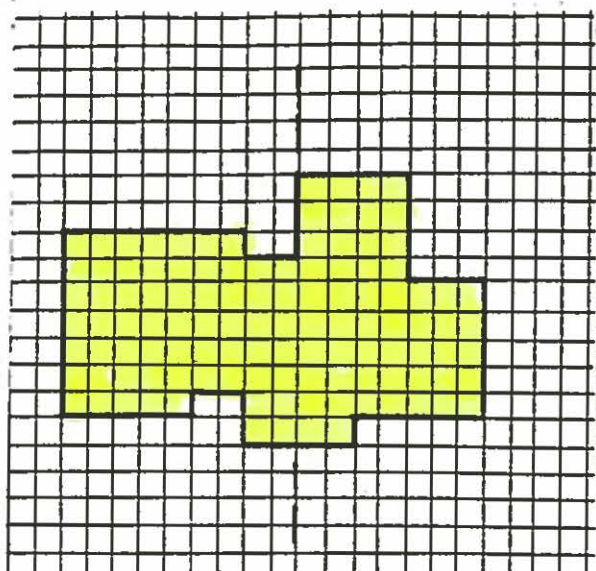
-  surface habitable entrant en considération dans le cadre de l'indice d'utilisation du sol
-  garages
-  caves – dépôts
-  sous-toiture
-  1.06 m. x 1.06 m. = 1.1236 m<sup>2</sup>

bernard ogier  
architecte diplômé épil  
urbaniste f. u. s. designer  
classé d'art 48.10.11 son suisse



<b>Affectation des surfaces</b>
<b>Construction No 3</b>
Sans échelle 26.02.2002
0311 – 7 <sup>2</sup> – c)

D. Chevrier




**REZ**

## Plan de quartier

**M. et Mme Patrick et Danièle  
Chevrier – de Kalbermatten à  
Besse – Surgat**

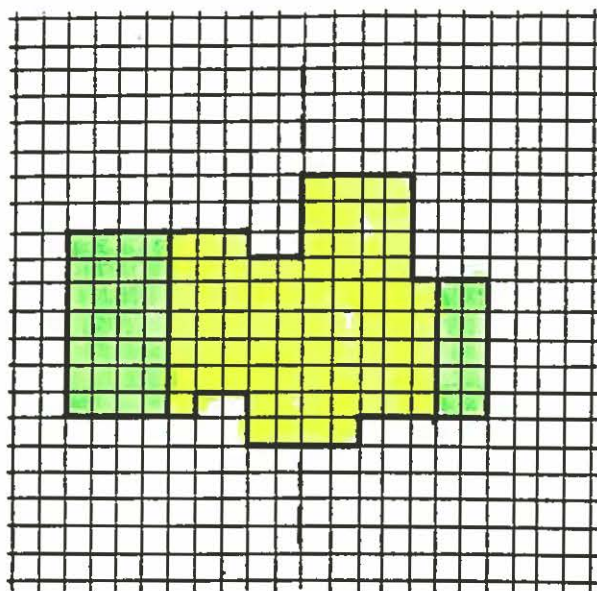
**Commune de Grimisuat**

 surface habitable entrant en  
considération dans le cadre de  
l'indice d'utilisation du sol

 garages

 caves – dépôts

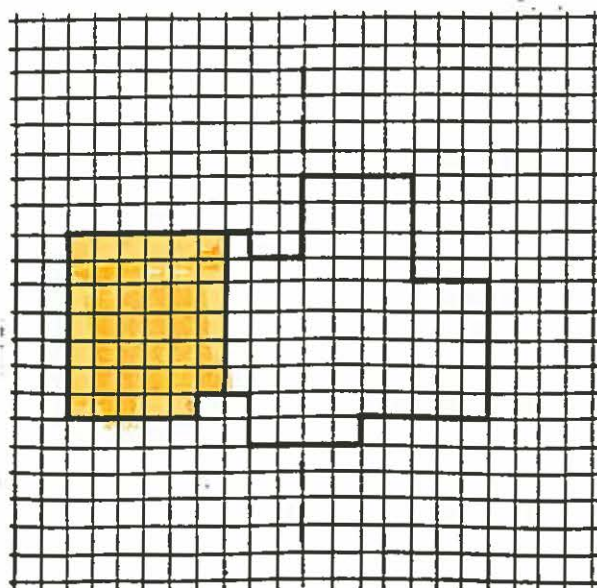
 sous-toiture



**ETAGE**



1.06 m. x 1.06 m. = 1.1236 m<sup>2</sup>



**SOUS-SOL**

  
Bernard Agger  
architecte d'après le plan  
urbain de la commune  
date du plan 48.1951 son suisse

## Affectation des surfaces

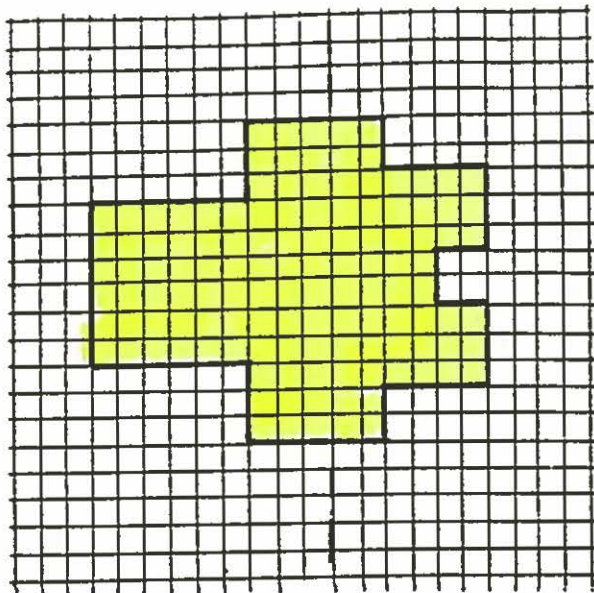
**Construction No 4**

Sans échelle

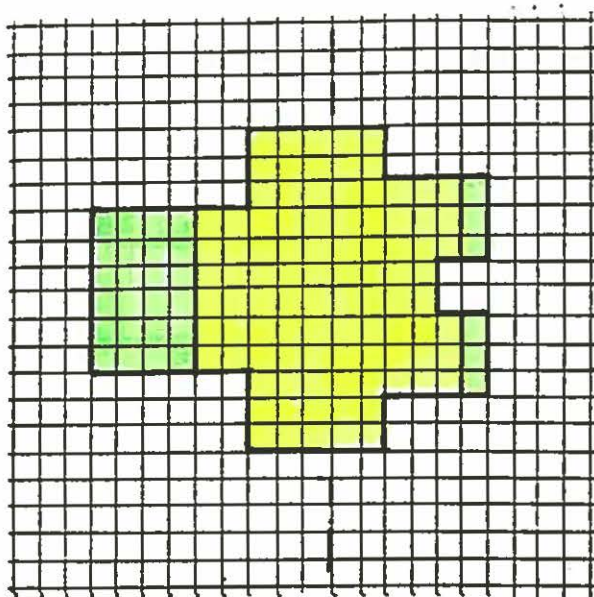
26.02.2002

0311 – 7<sup>2</sup> – d)

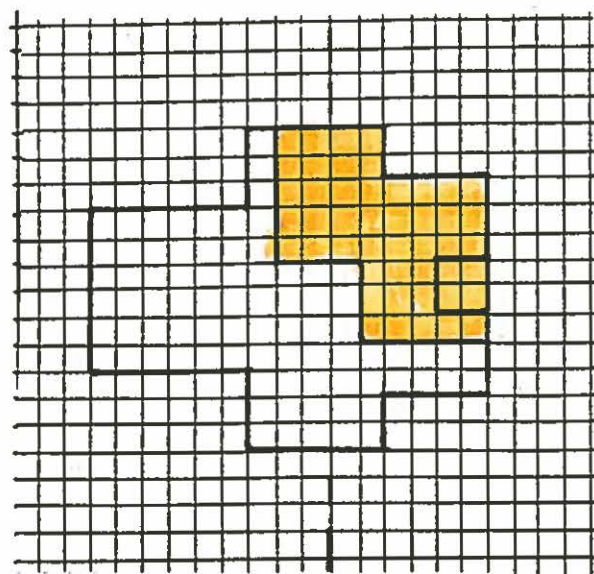
*D. Chevrier*



REZ



ETAGE







SOUS-SOL

# Plan de quartier

M. et Mme Patrick et Danièle  
Chevrier – de Kalbermatten à  
Besse – Surgat

Commune de Grimisuat

-  surface habitable entrant en considération dans le cadre de l'indice d'utilisation du sol
-  garages
-  caves – dépôts
-  sous-toiture



1.06 m. x 1.06 m. = 1.1236 m<sup>2</sup>

bernard ogier  
architecte diplômé  
urbain et designer  
classé n° 48.1951 son suisse

## Affectation des surfaces

**Construction No 5**

Sans échelle

26.02.2002

0311 – 7<sup>2</sup> – e)

P. Chevrier

TERRAIN PATRICK CHEVRIER

**BESSE SURGAT**

PROFILS EN TRAVERS (B)

Echelle 1/500

Plan de quartier

M. et Mme Patrick et Danièle  
Chevrier – de Kalbermatten à  
Besse – Surgat

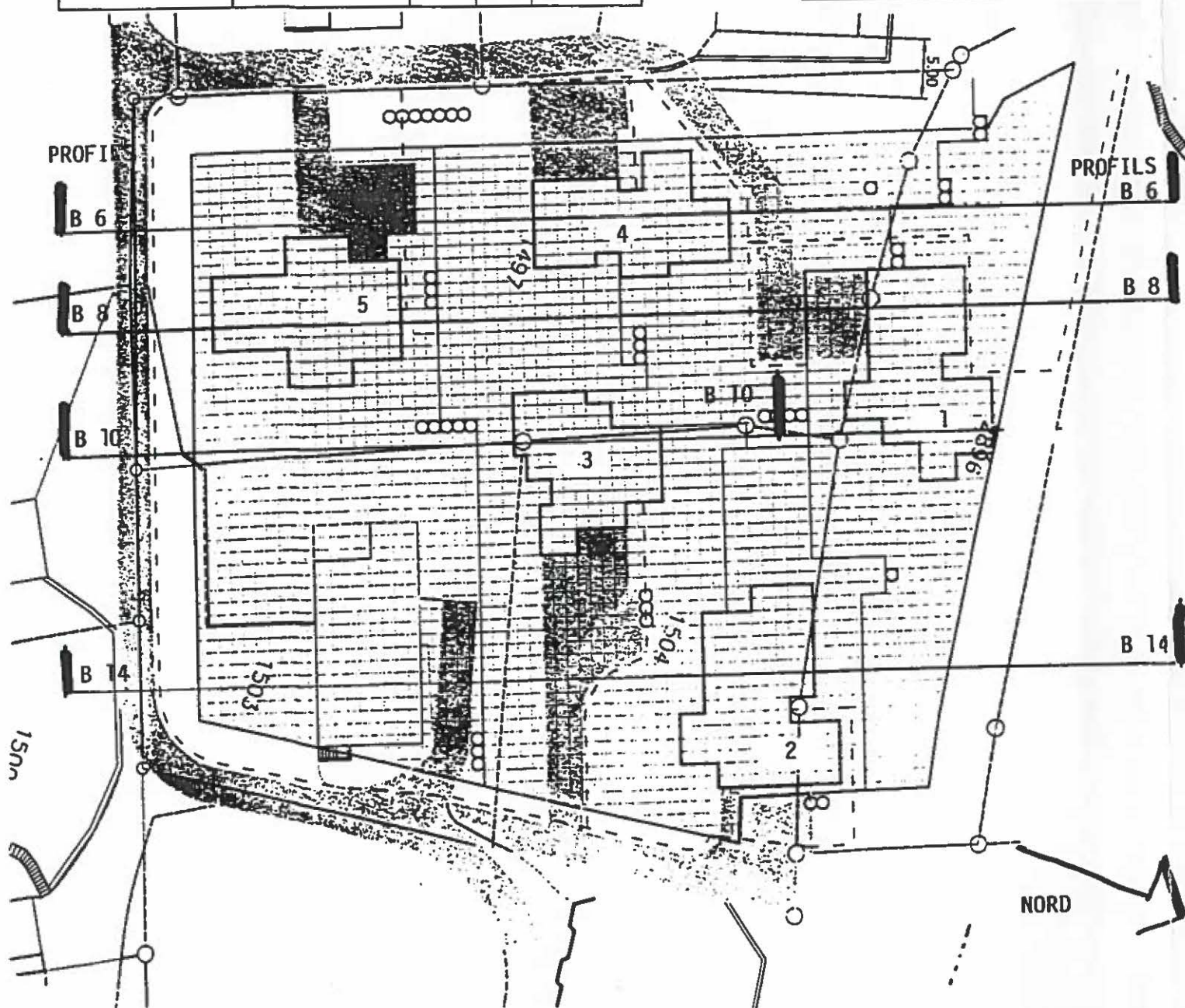
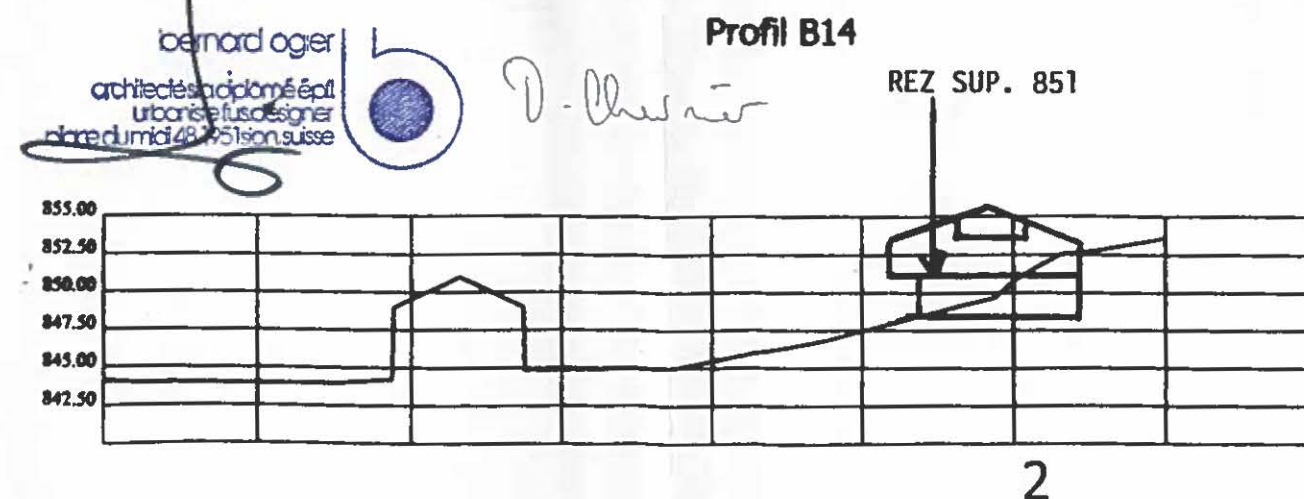
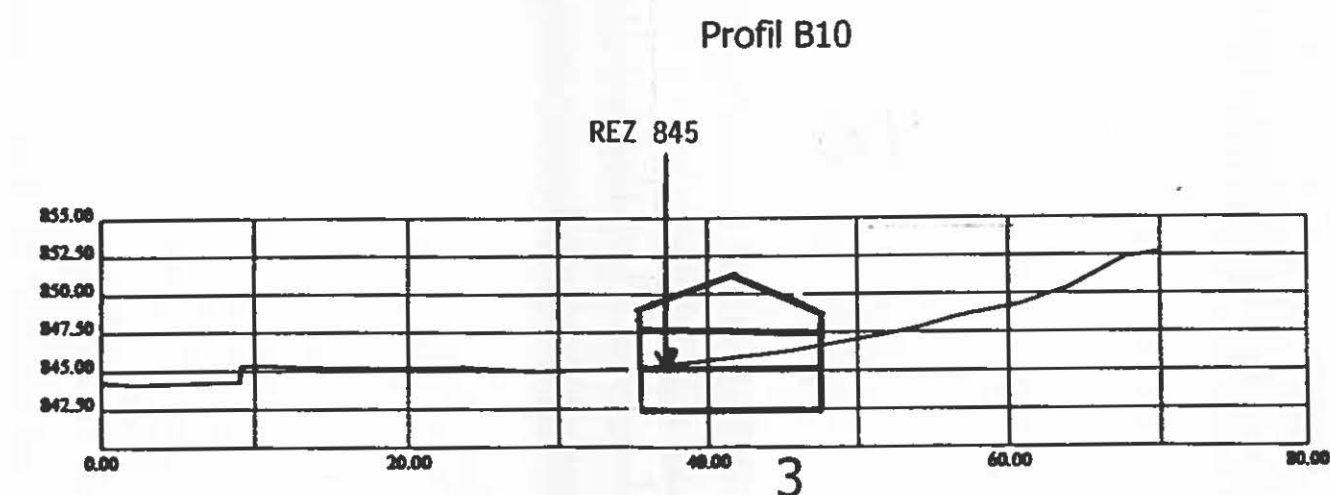
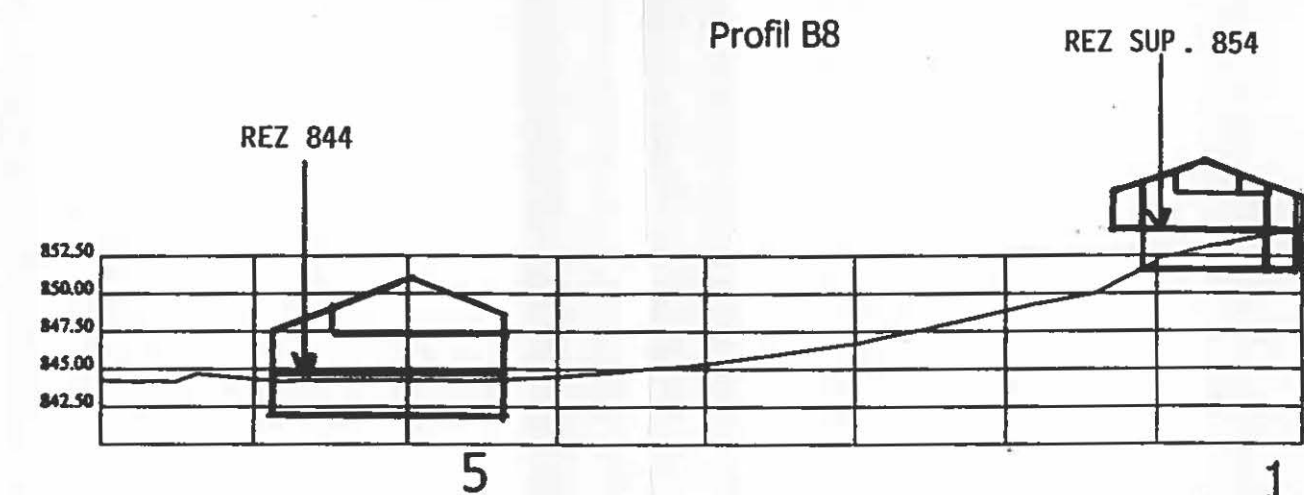
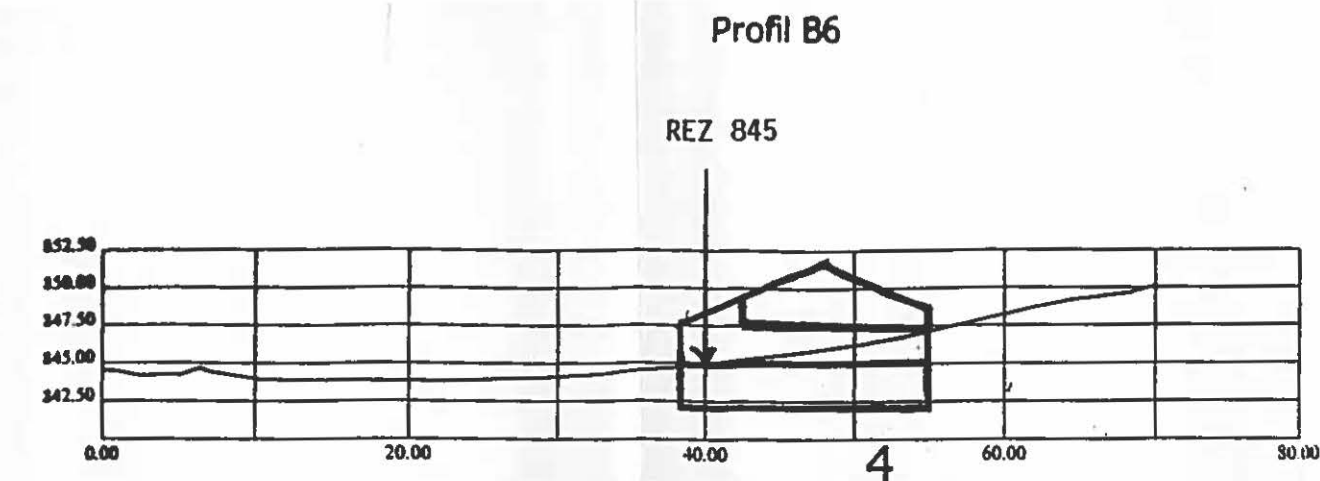
Commune de Grimisuat

Implantation des profils

Coupes sur profils

Echelle 1:500<sup>ème</sup> 26.02.2002

0311 - 8<sup>1</sup>



bernard oger  
architecte diplômé épfl  
urbanisme et design  
place du midi 48 1251 son suisse

D. Chevrier

TERRAIN PATRICK CHEVRIER

BESSE SURGAT

PROFILS EN TRAVERS (B)

Echelle 1/500

Plan de quartier

M. et Mme Patrick et Danièle  
Chevrier - de Kalbermatten à  
Besse - Surgat

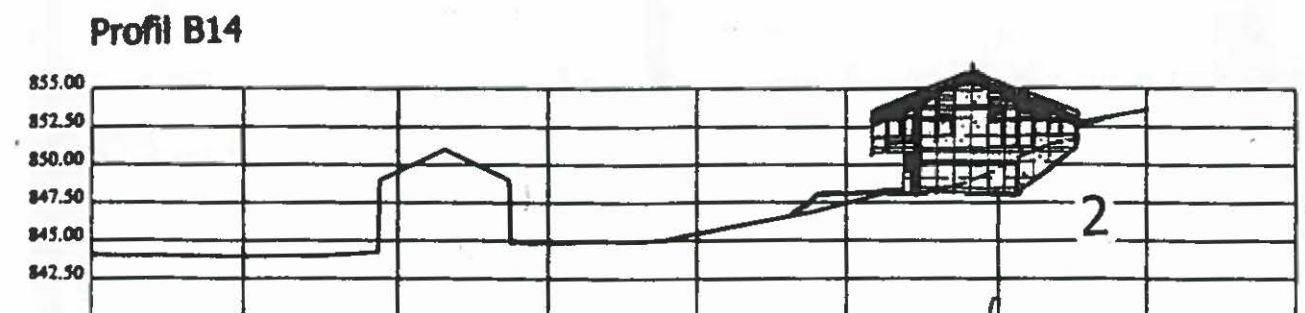
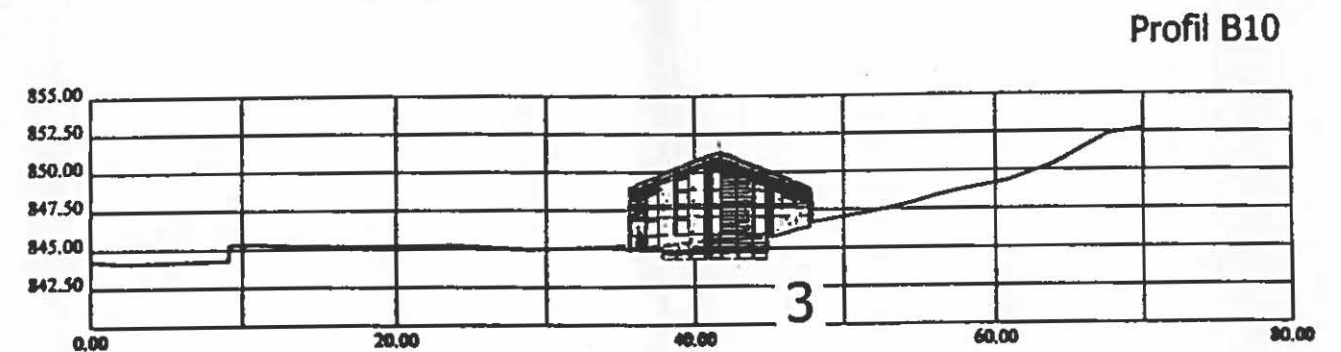
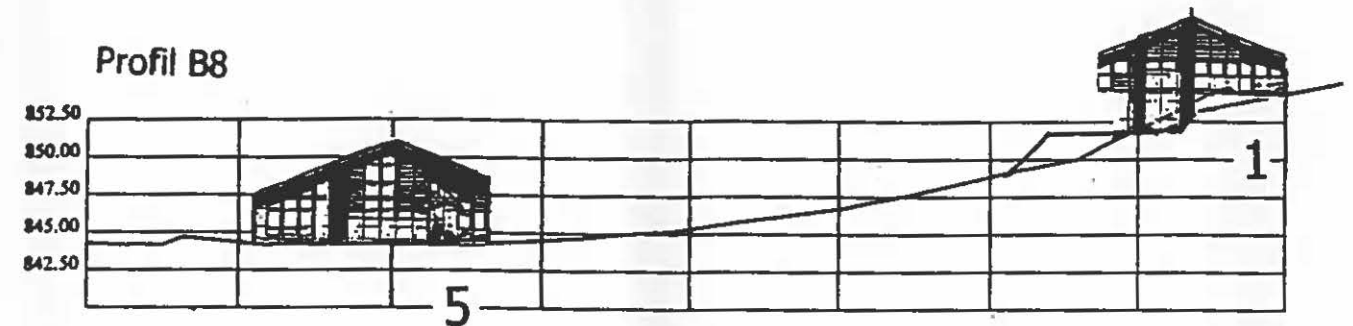
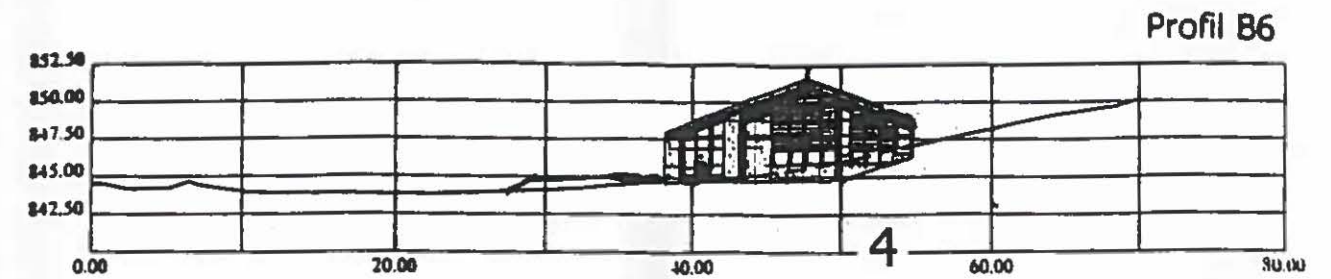
Commune de Grimisuat

Implantation des profils

Élévation des faces est

Echelle 1:500<sup>ème</sup> 26.02.2002

0311 - 8<sup>2</sup>



bernard ogier  
architecte diplômé épfi  
urbaniste et designer  
place du midi 48, 1950 Yverdon Suisse

D. Chevrier

IMAGE DE LA SUPERPOSITION

