

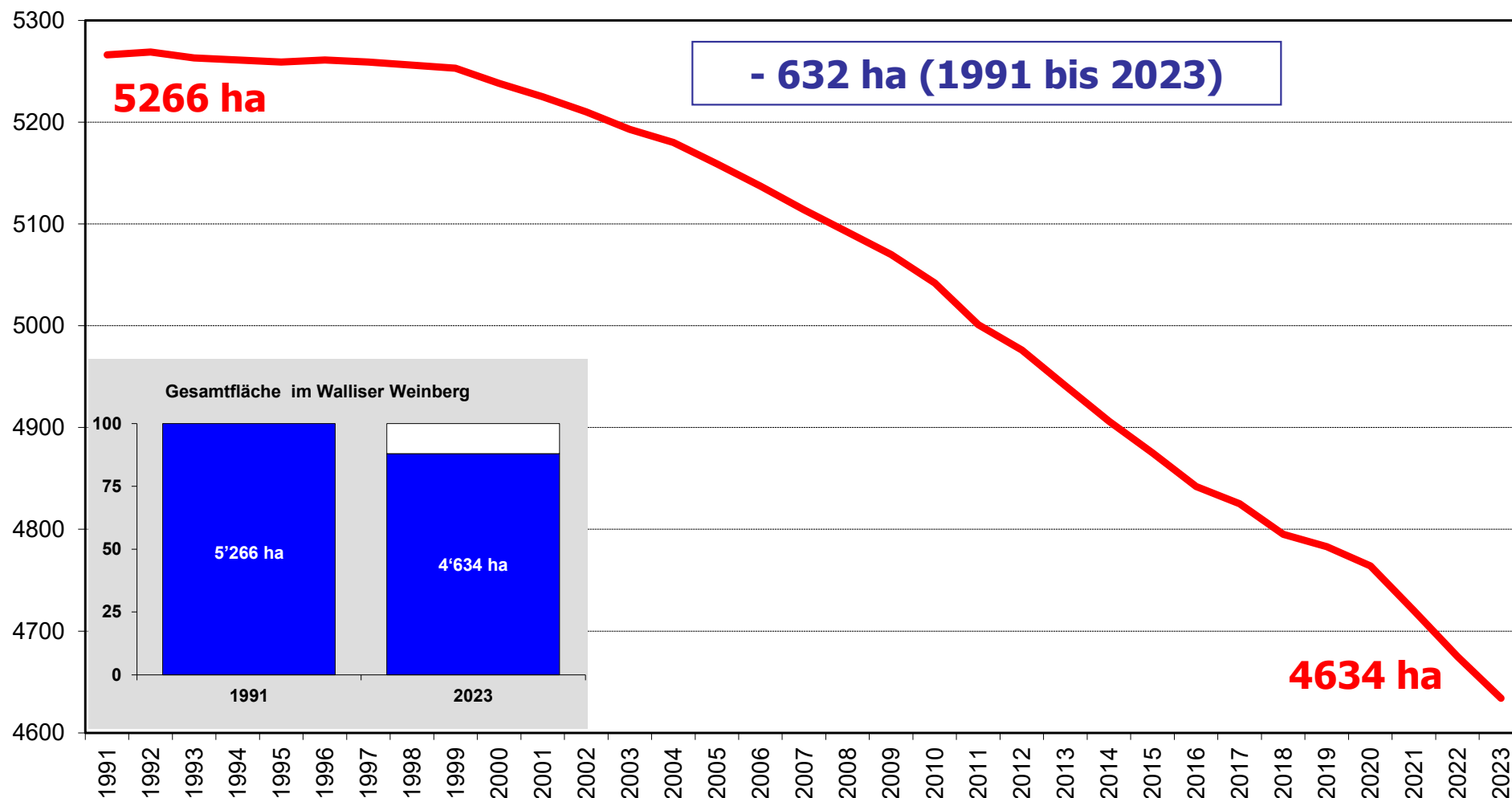
Stand und Entwicklung des Sortenbestandes im Walliser Weinberg

Amt für Rebbau und Wein
Rebbergregisterauszug 31. Dezember 2023

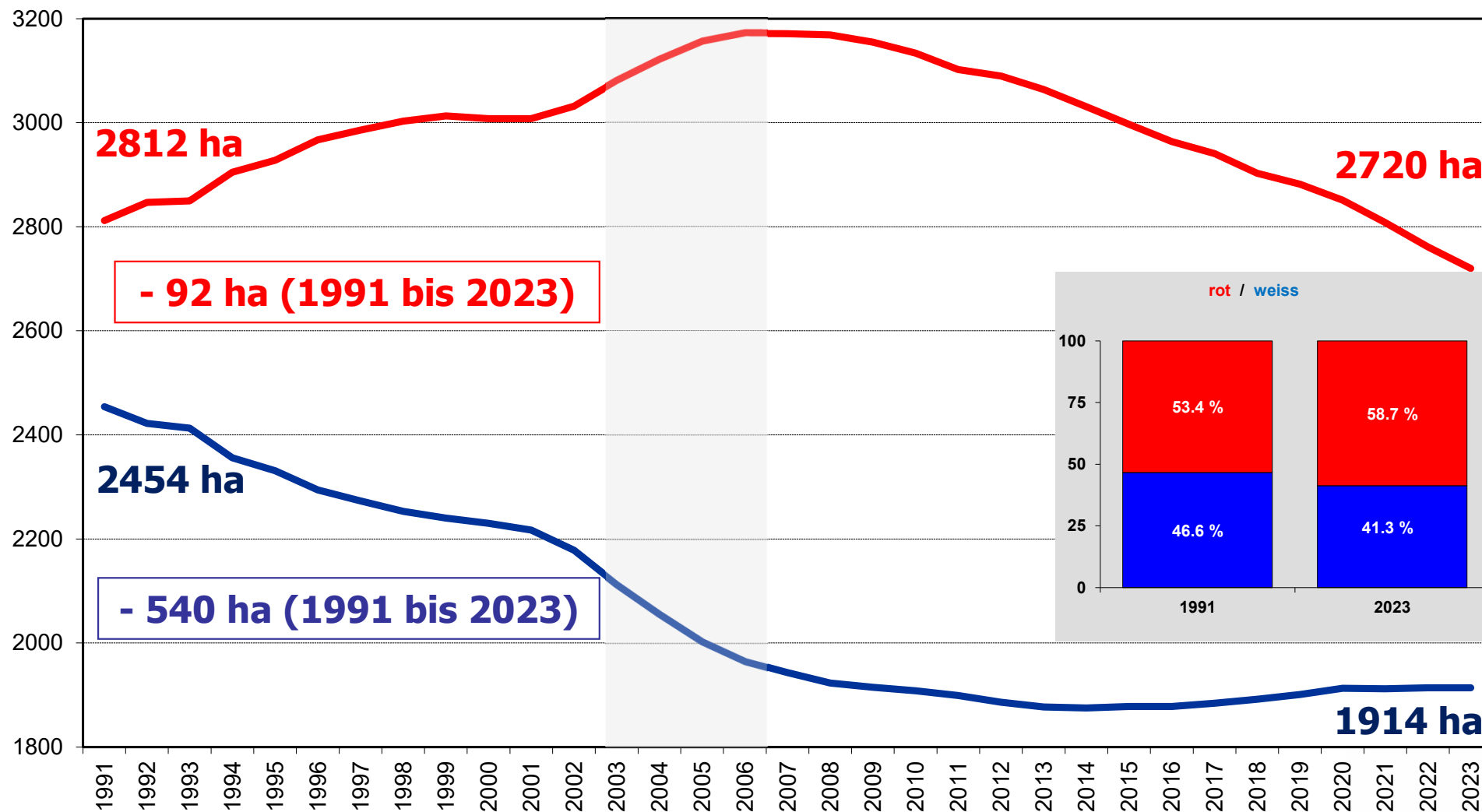
Walliser Weinberg

- Situation zwischen 1991 und 2023 (Folio 3 bis 5)
- Erneuerungsrhythmus (Folio 6)
- Drei Hauptsorten (Folio 7 bis 14)
- Einheimische Rebsorten (Folio 15 bis 22)
- Weitere Rebsorten (Folio 23 bis 38)
- Übersichtstabelle (Folio 39)

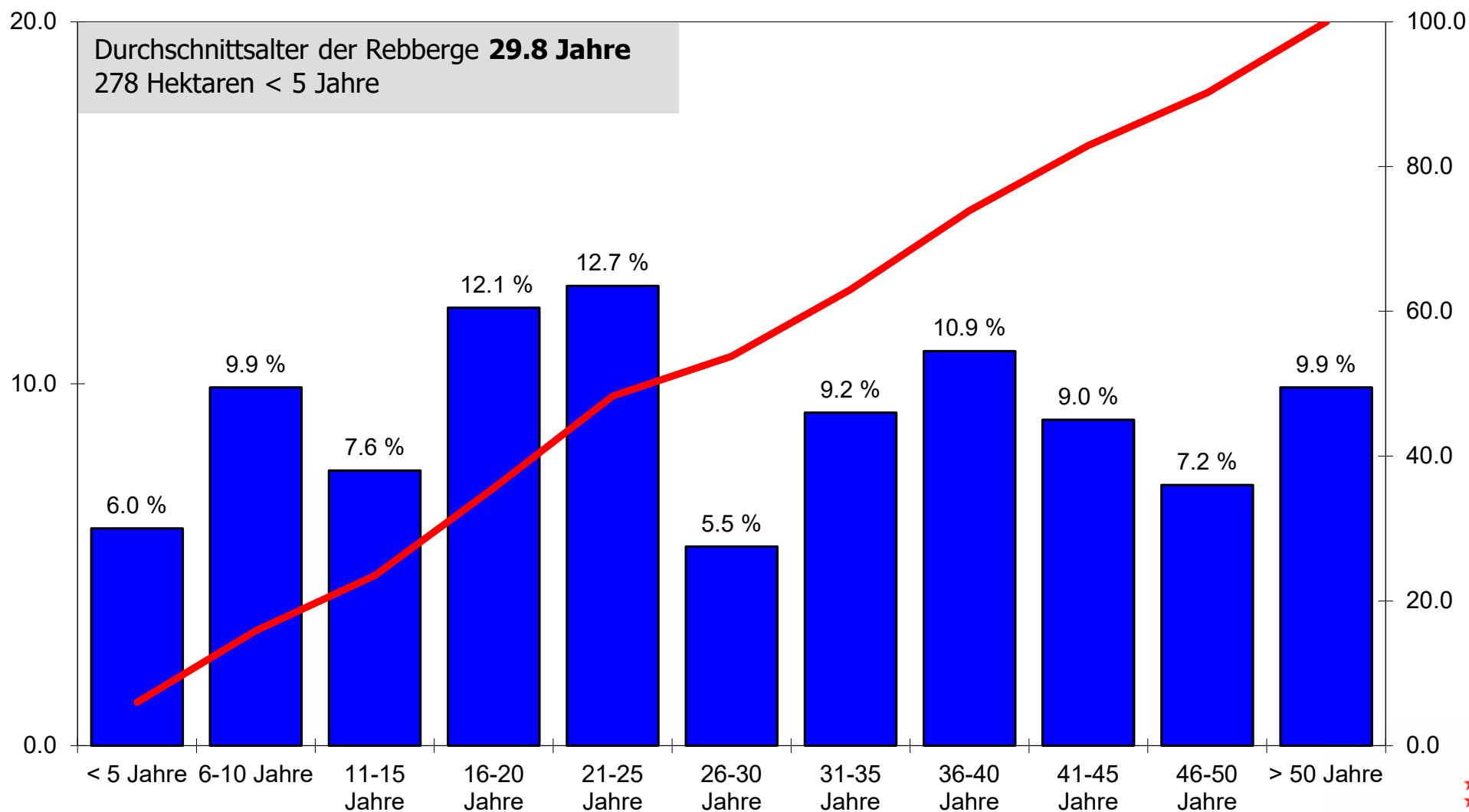
Entwicklung der Gesamtfläche im Walliser Weinberg



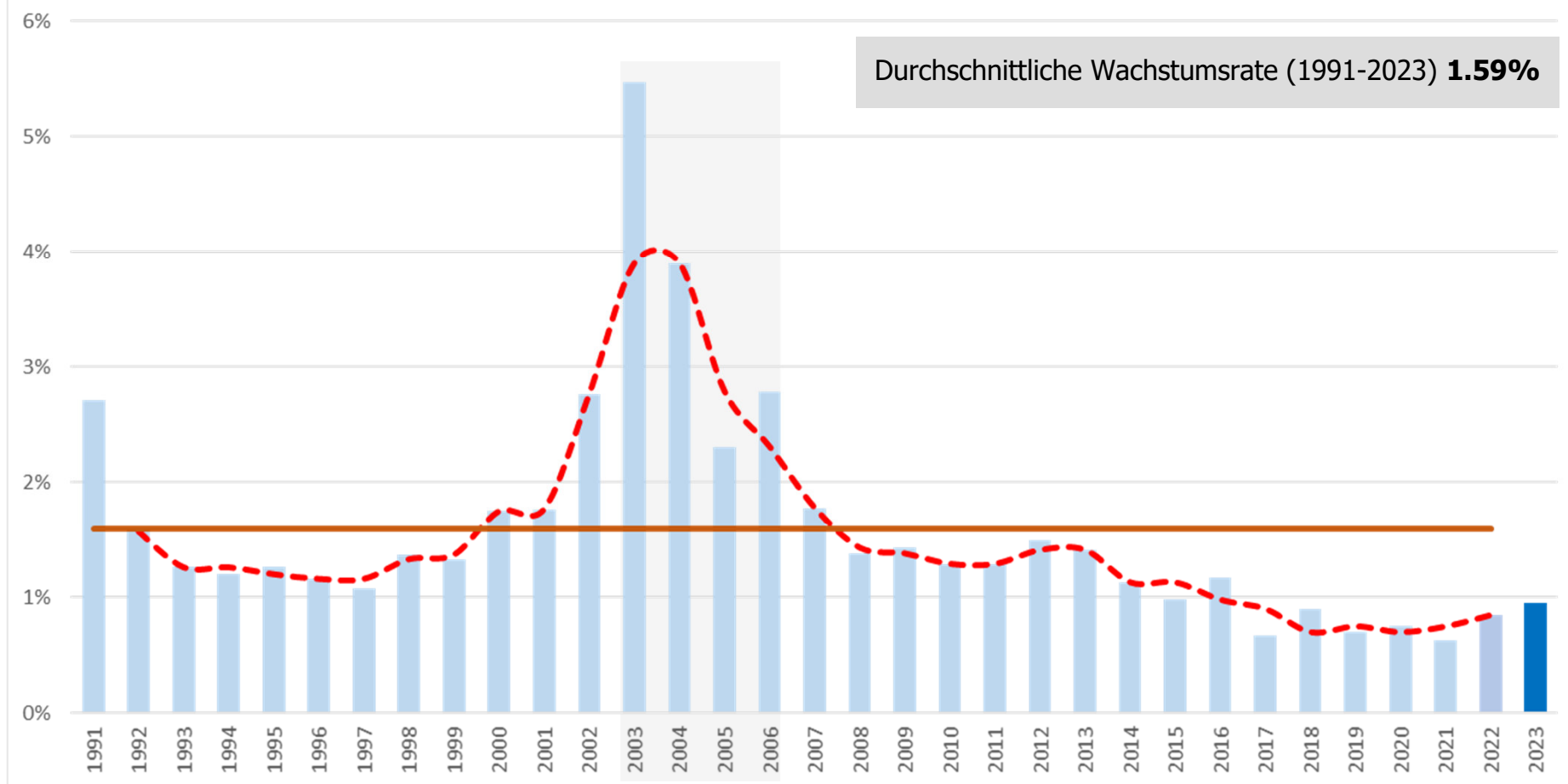
Entwicklung der Flächen mit roten und weissen Rebsorten im Walliser Weinberg



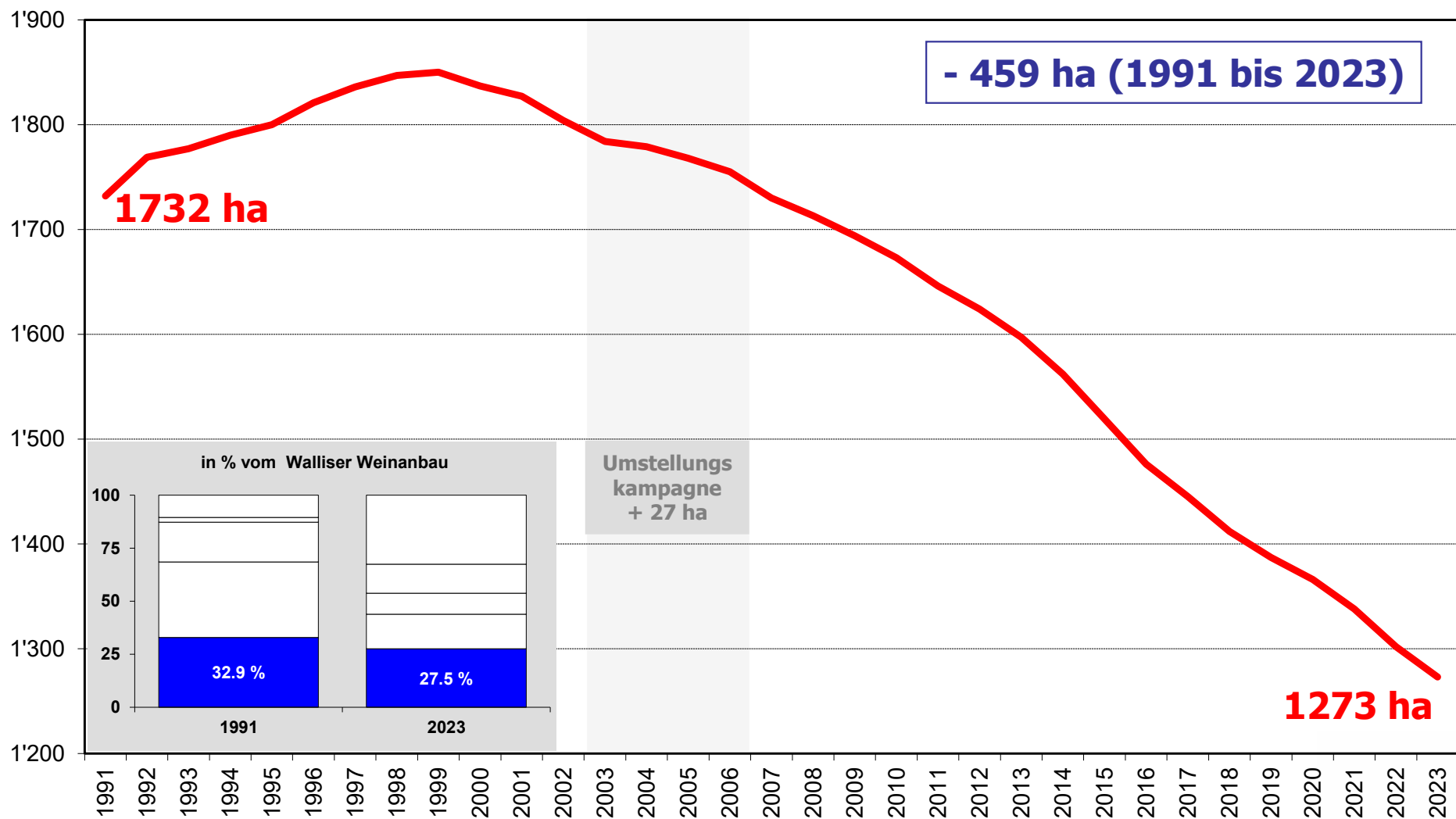
Altersstruktur des Walliser Weinberges (Abstufungen von 5 Jahren)



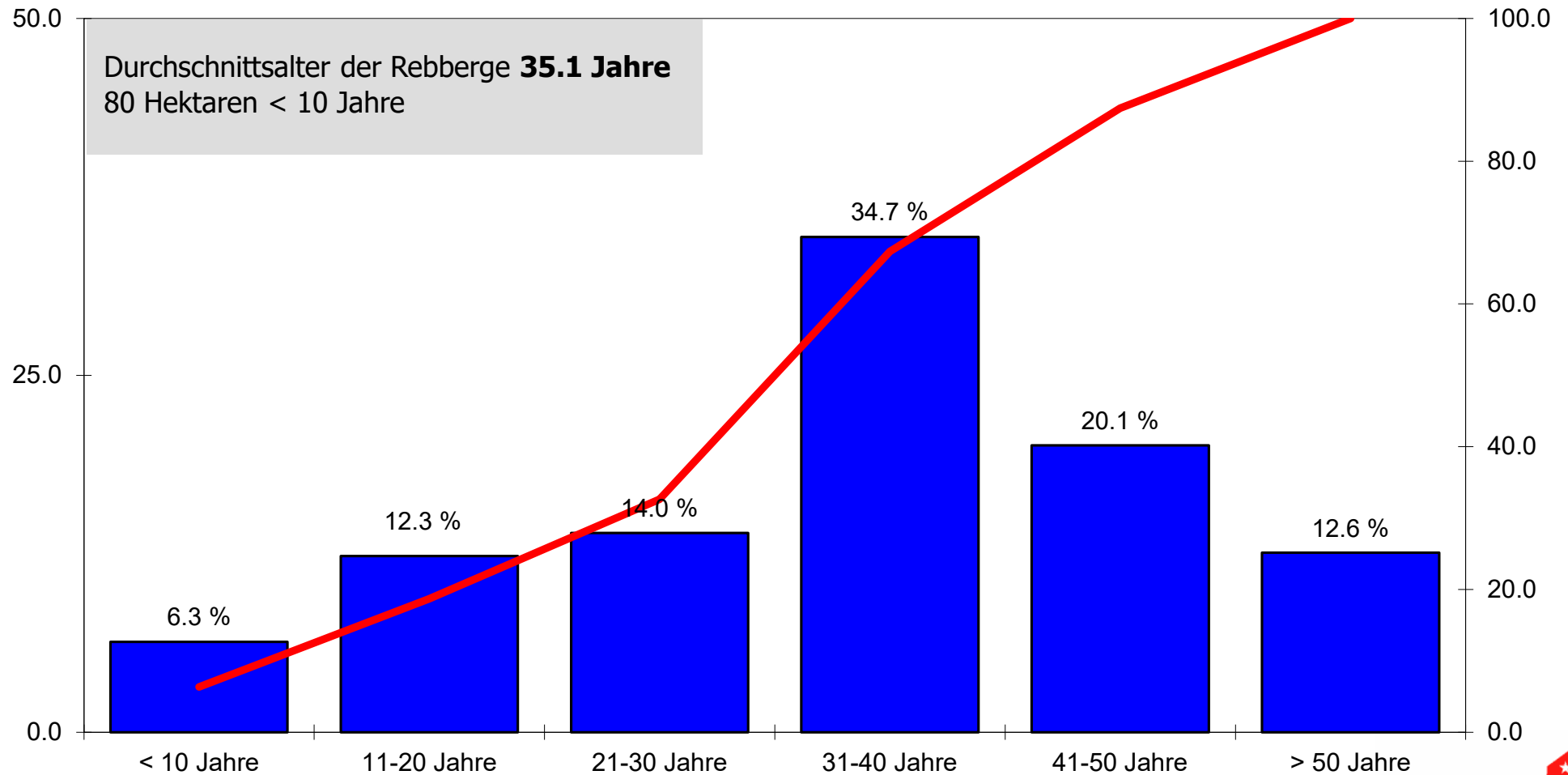
Erneuerungsrythmus des Weinberges



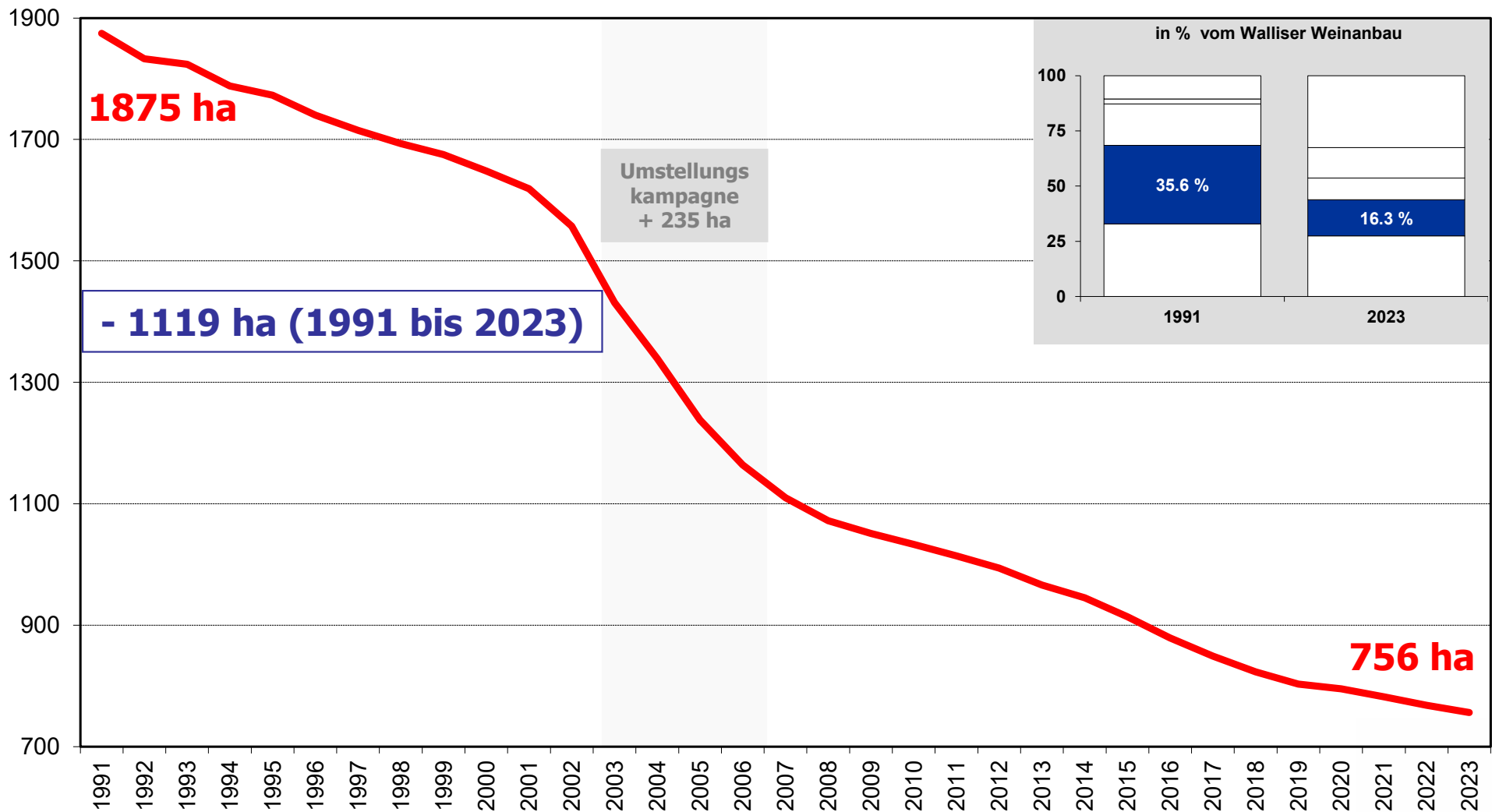
Flächenentwicklung pinot noir



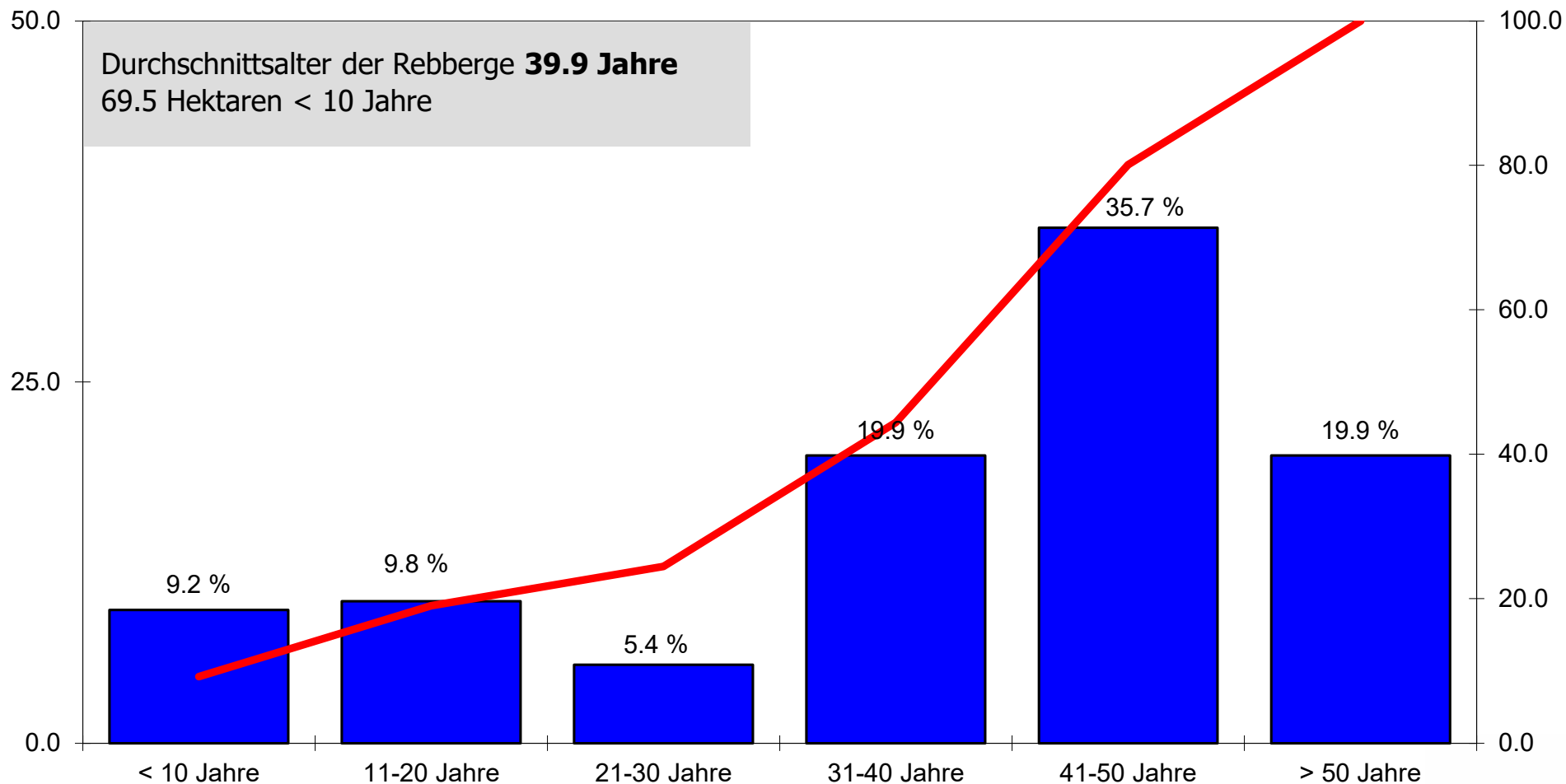
Alterstruktur pinot noir



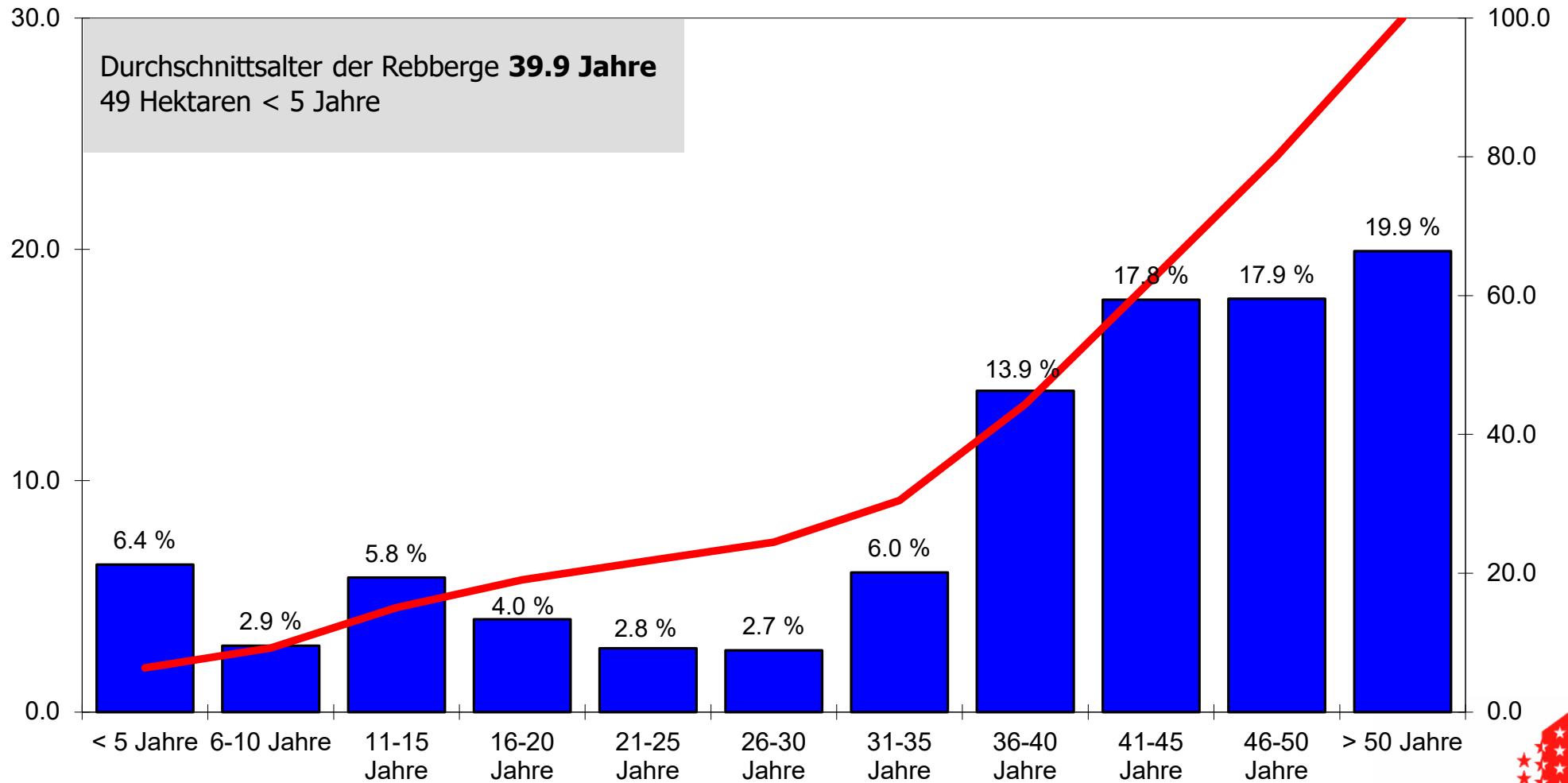
Flächenentwicklung chasselas



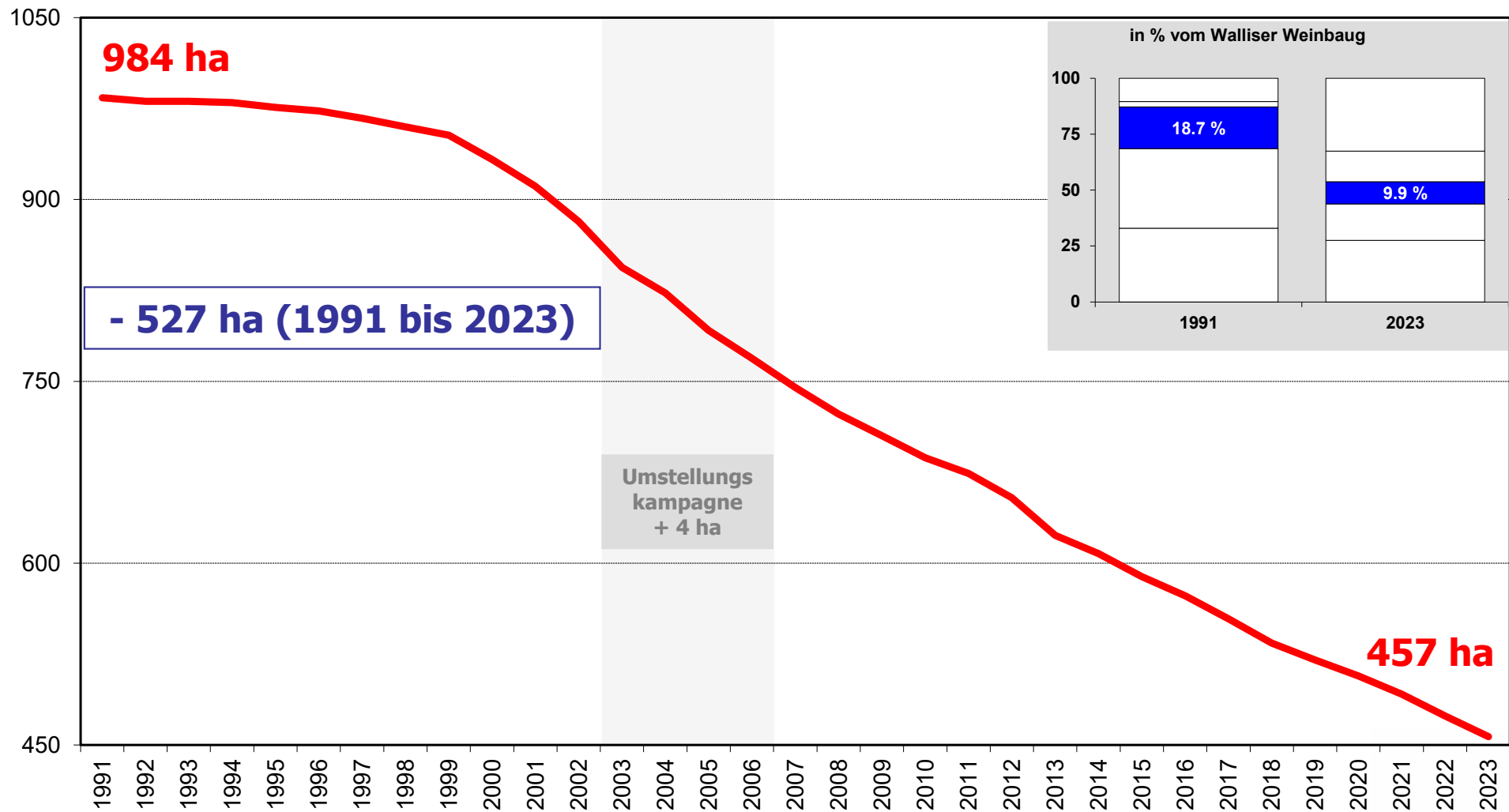
Altersstruktur chasselas (Abstufungen von 10 Jahren)



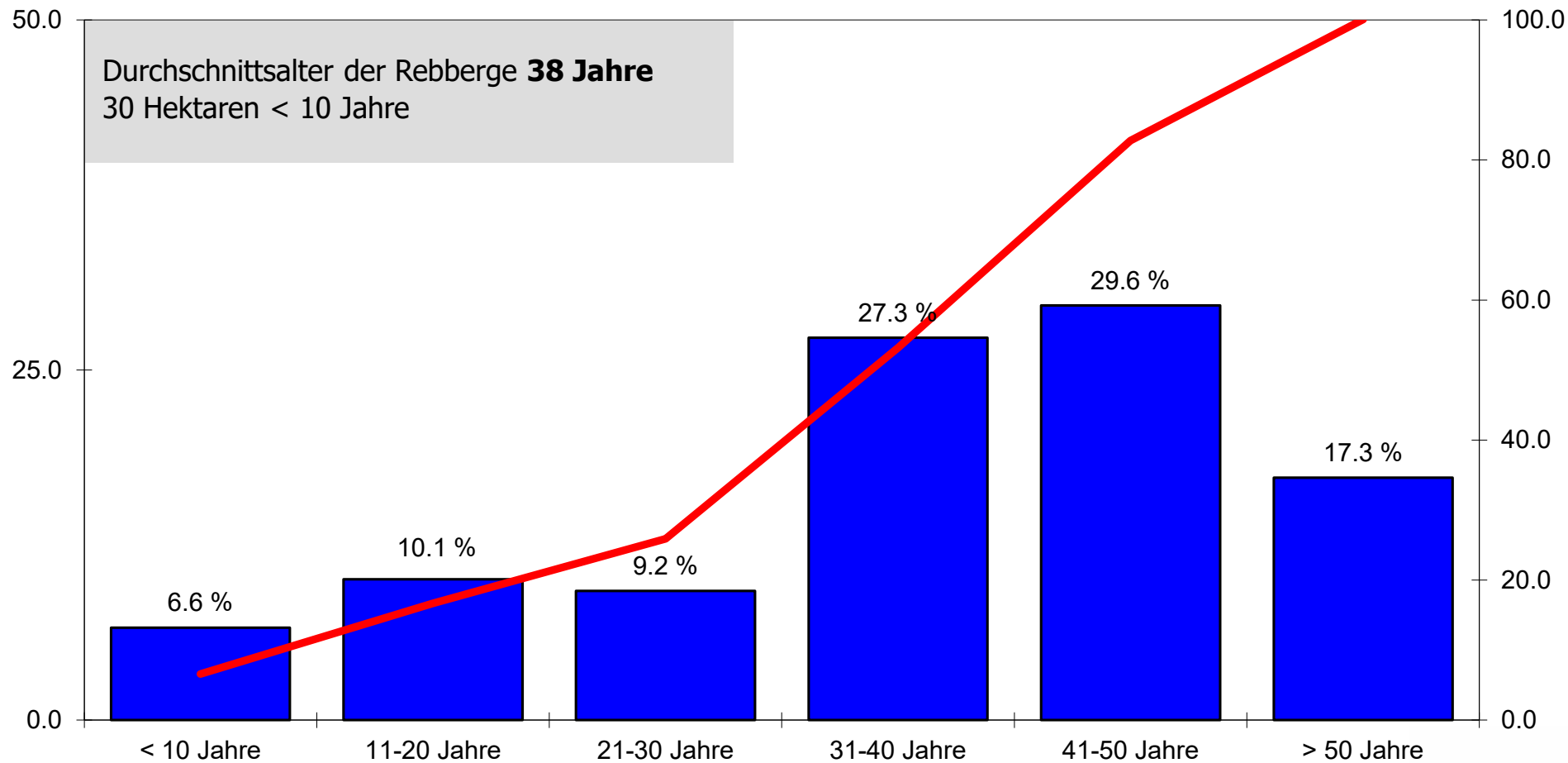
Alterstruktur chasselas (Abstufungen von 5 Jahren)



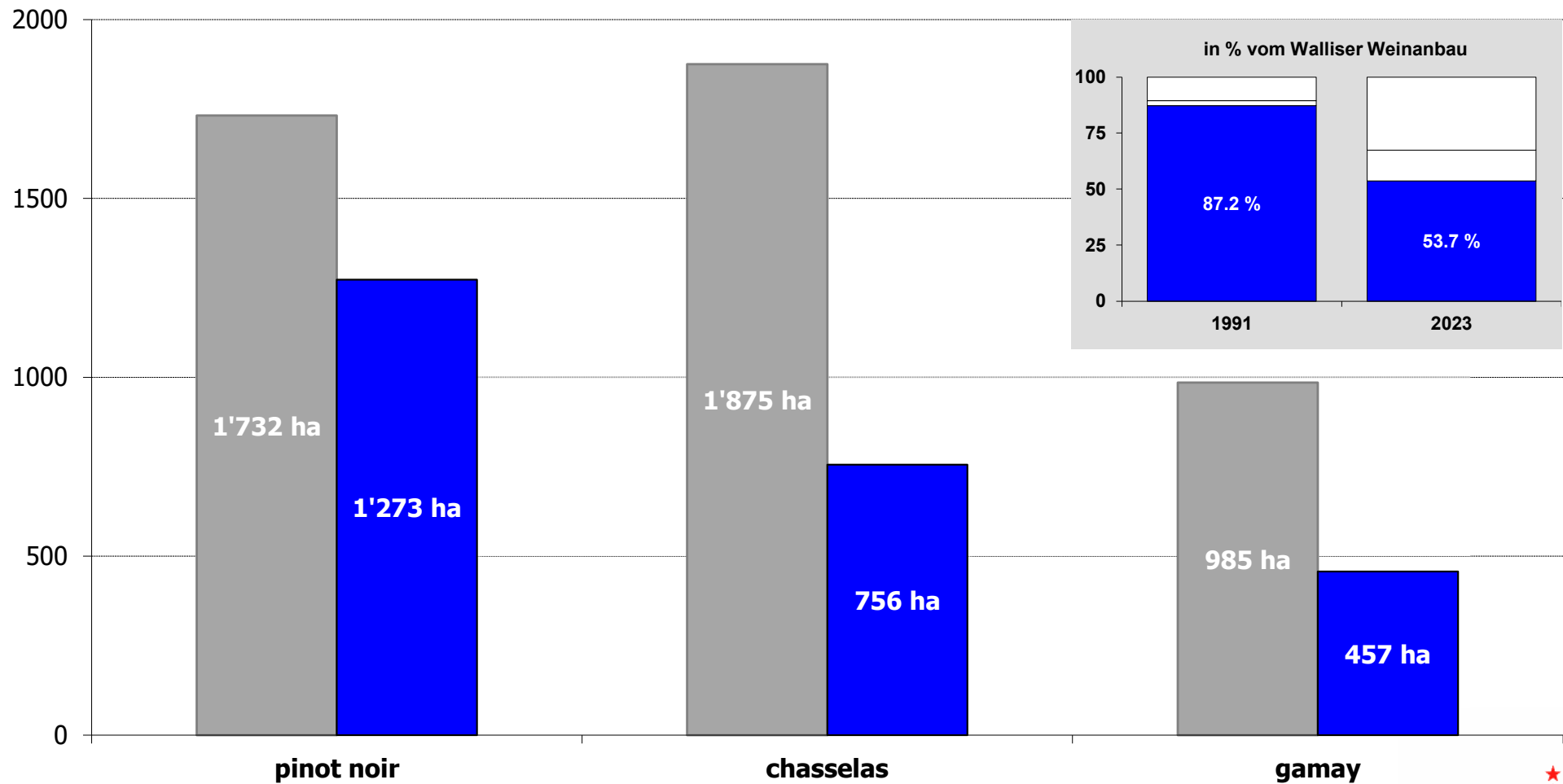
Flächenentwicklung gamay



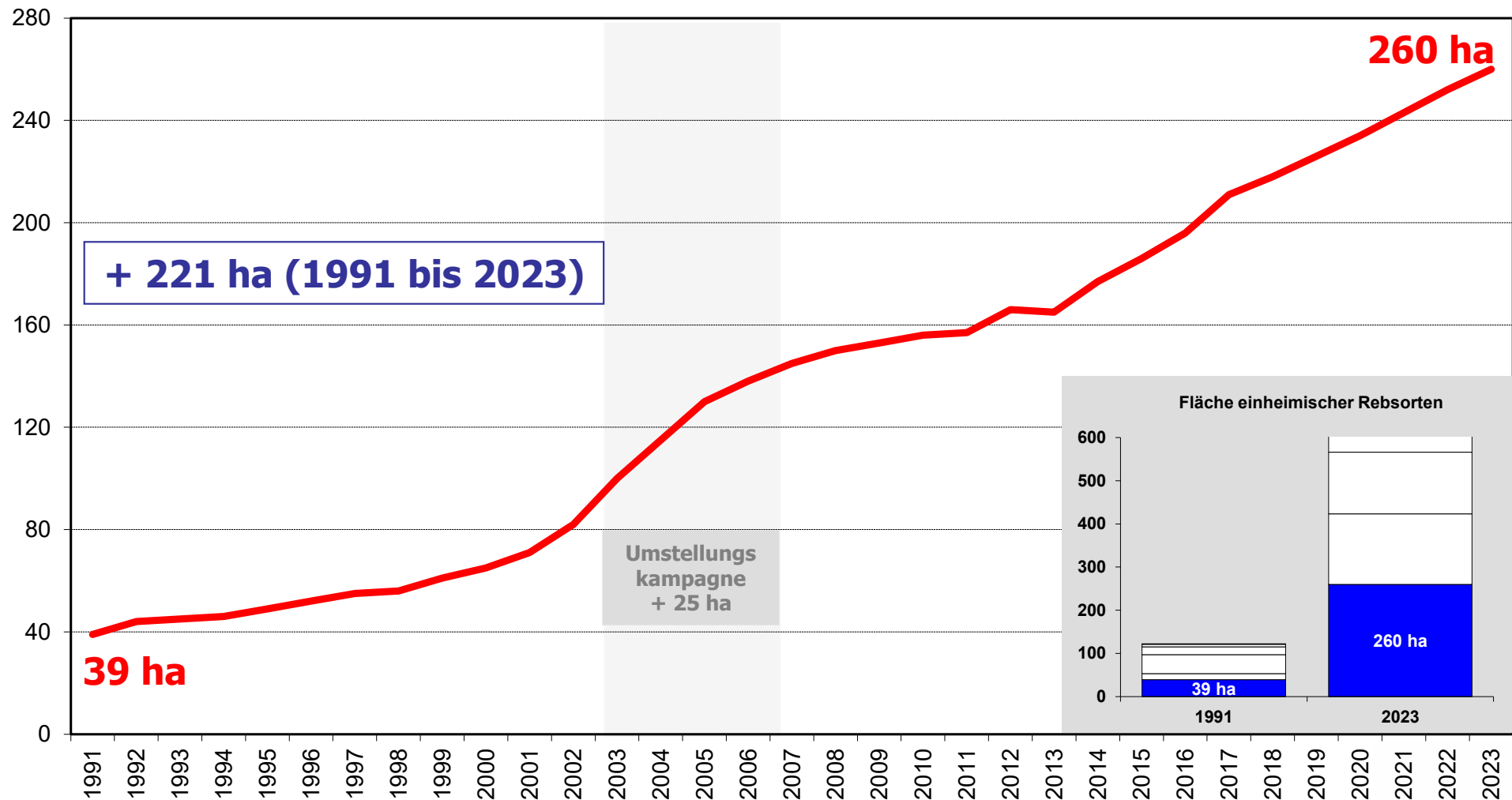
Altersstruktur gamay



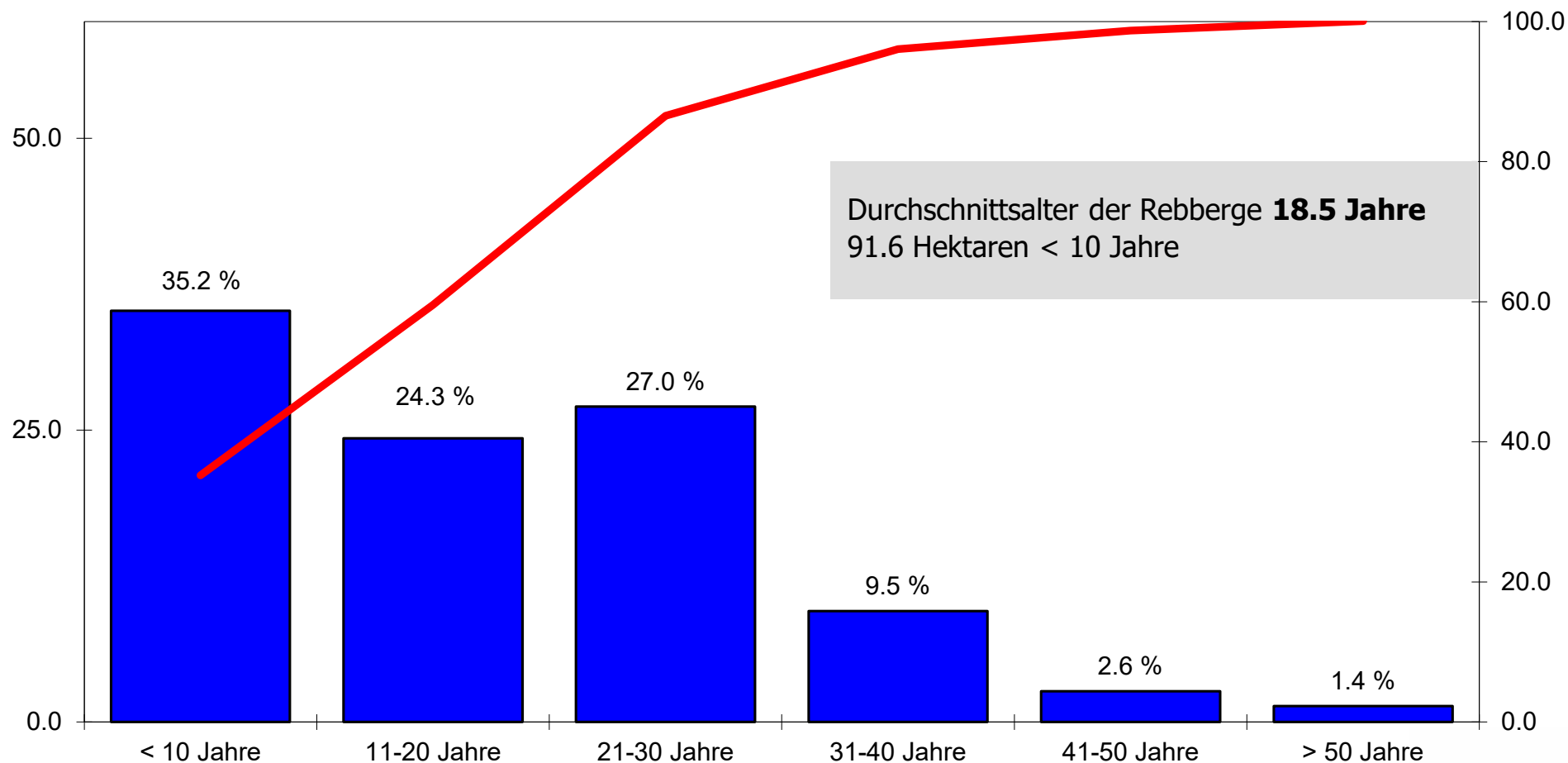
Zusammenfassung der Entwicklung der drei Hauptrebsorten (1991 – 2023)



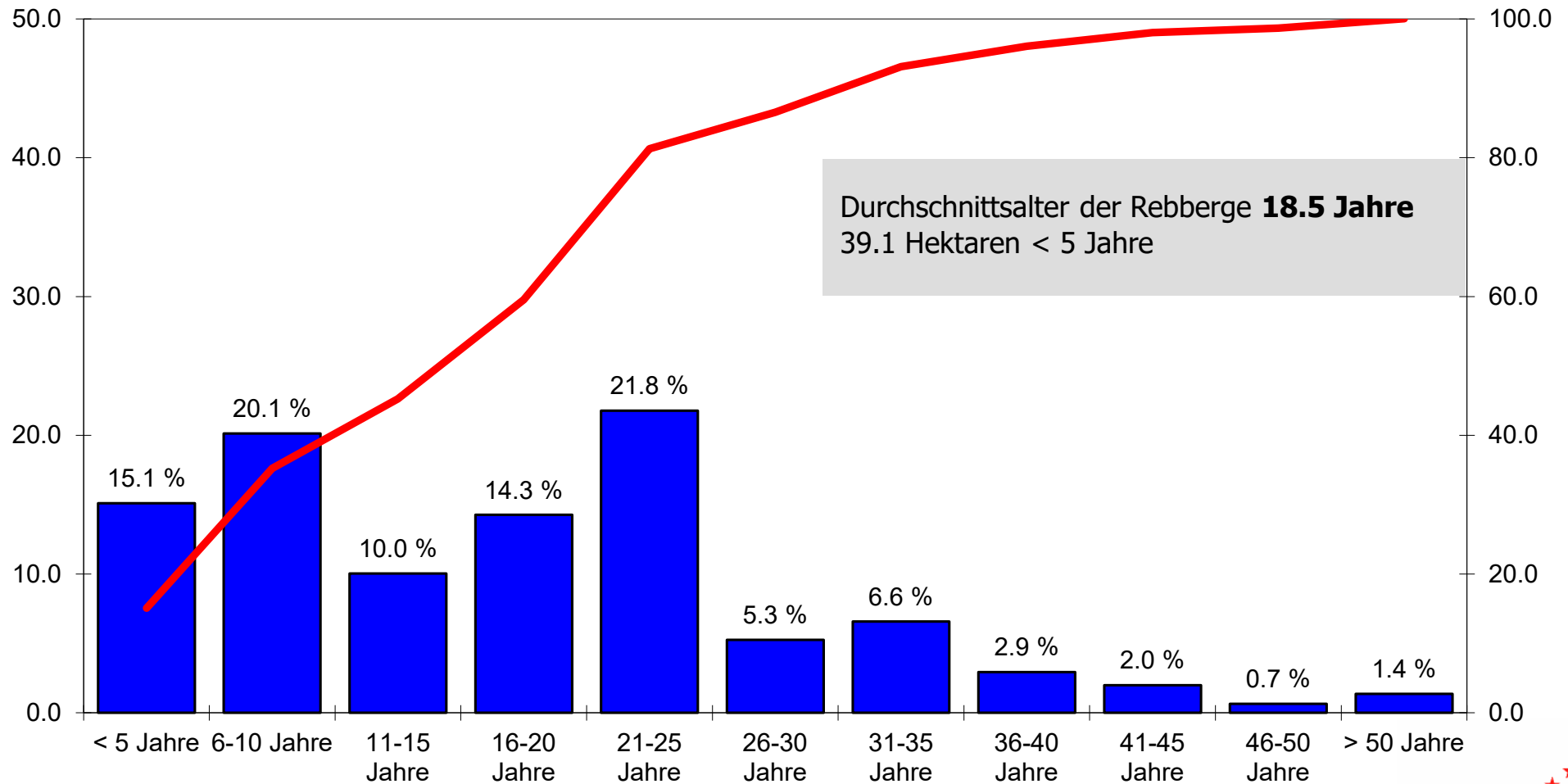
Flächenentwicklung petite arvine



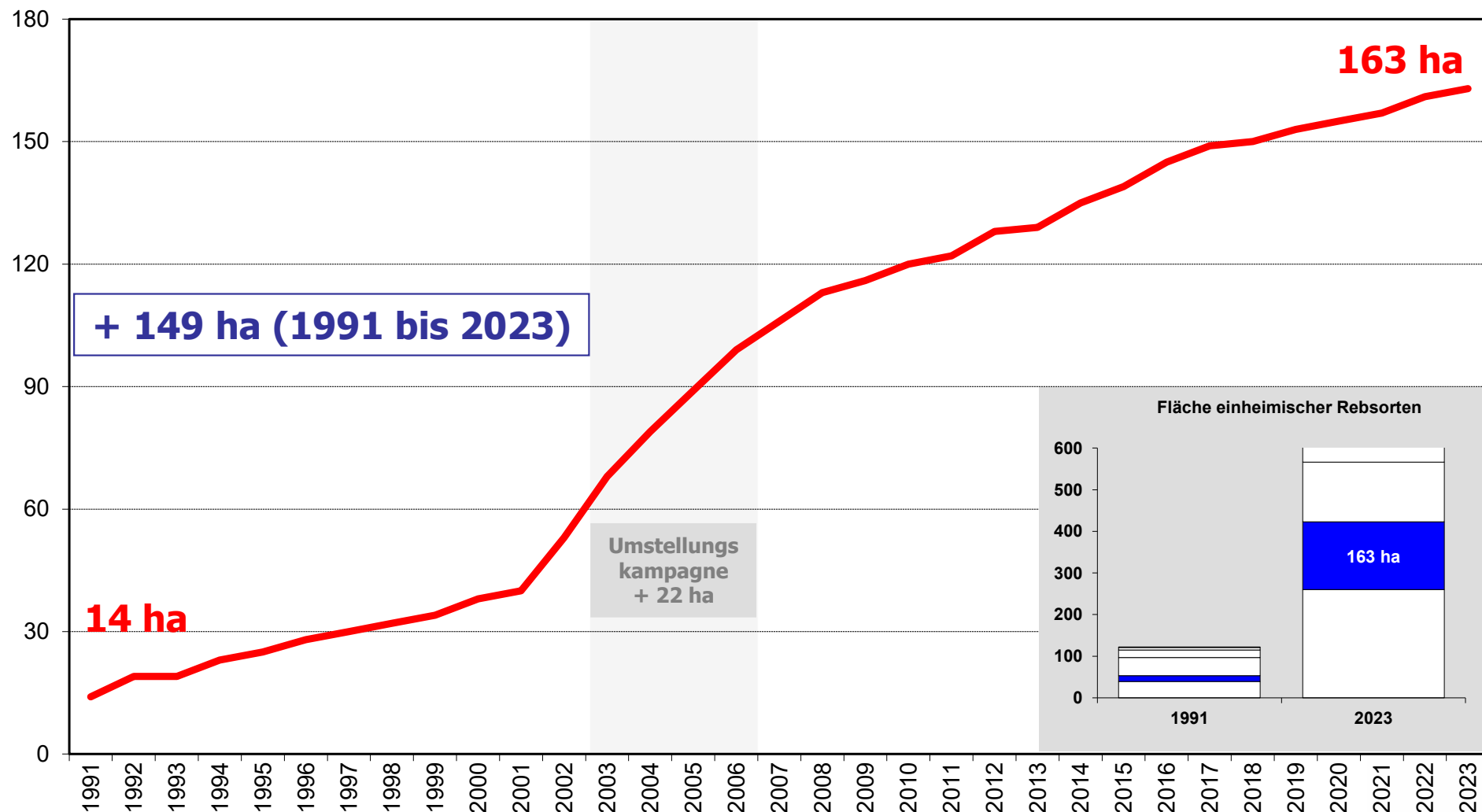
Altersstruktur petite arvine (Abstufungen von 10 Jahren)



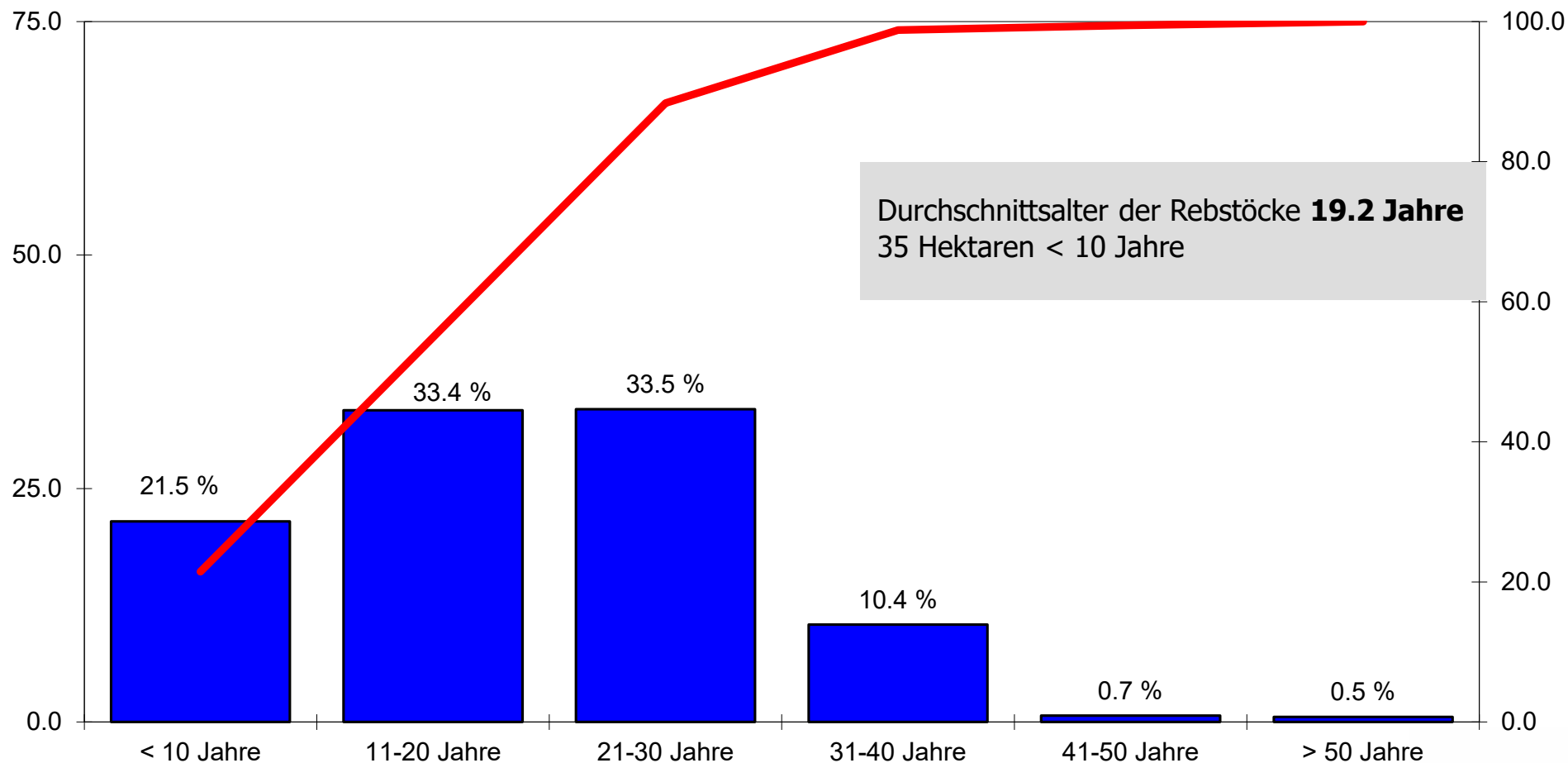
Altersstruktur petite arvine (Abstufungen von 5 Jahren)



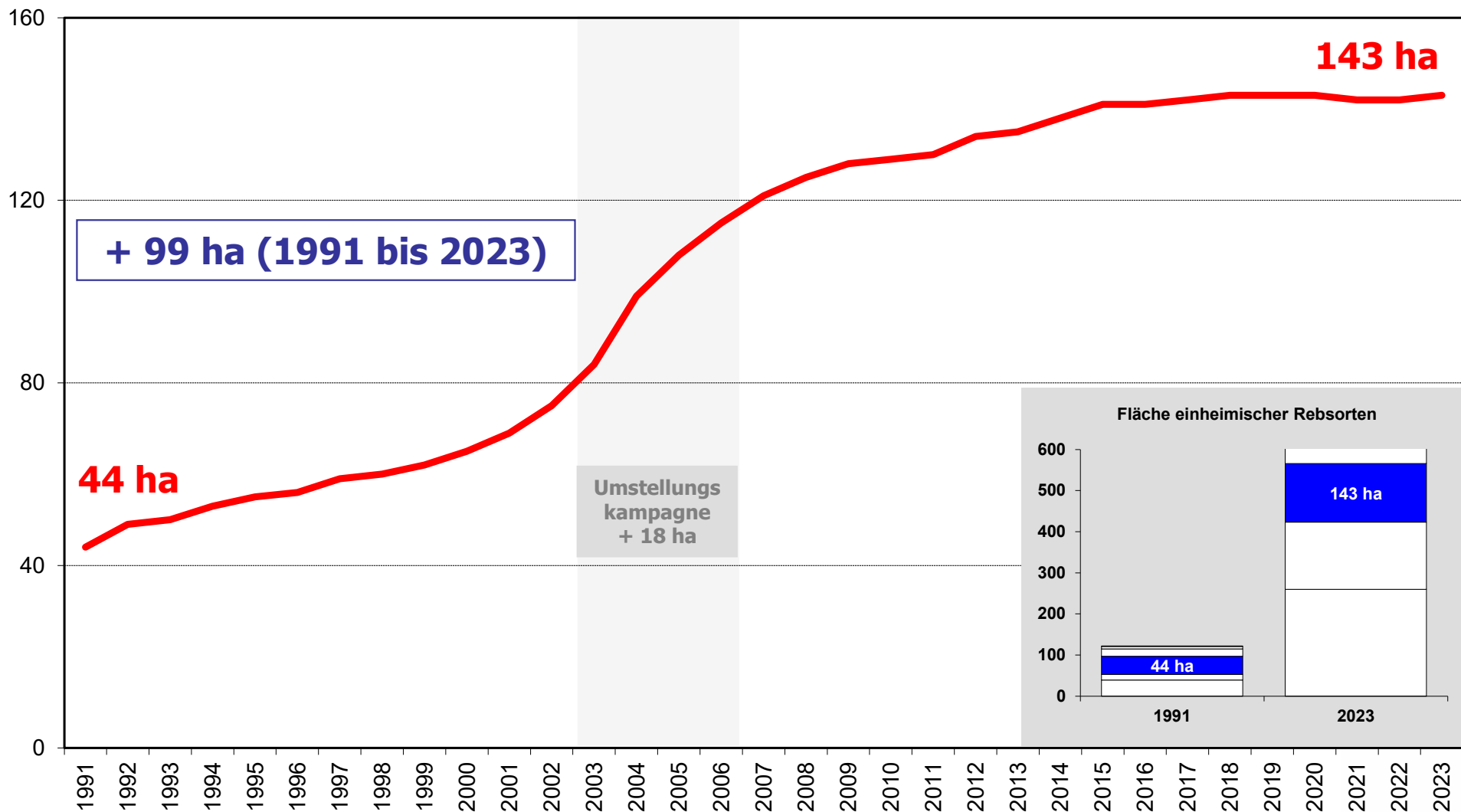
Flächenentwicklung cornalin



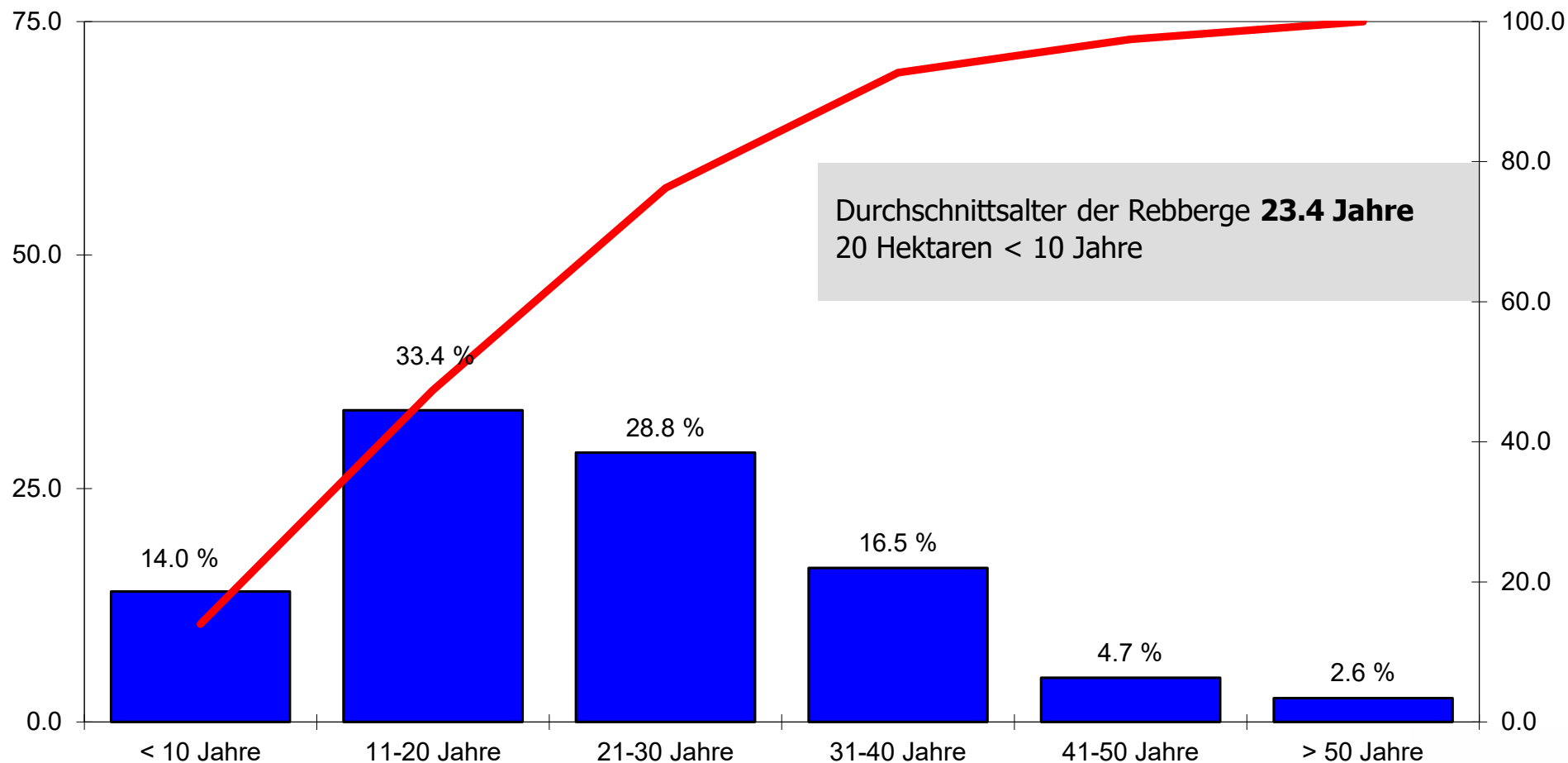
Altersstruktur cornalin



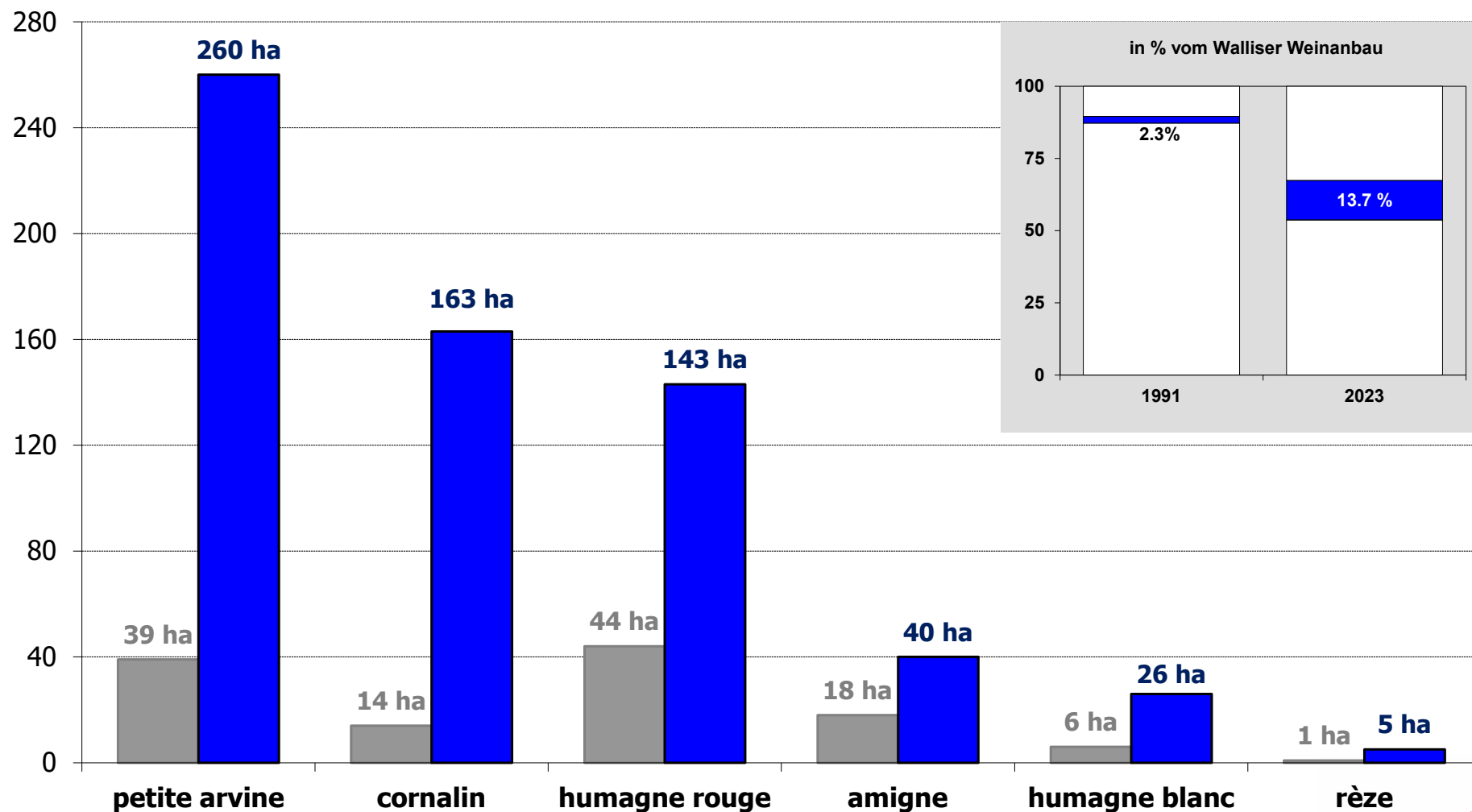
Flächenentwicklung humagne rouge



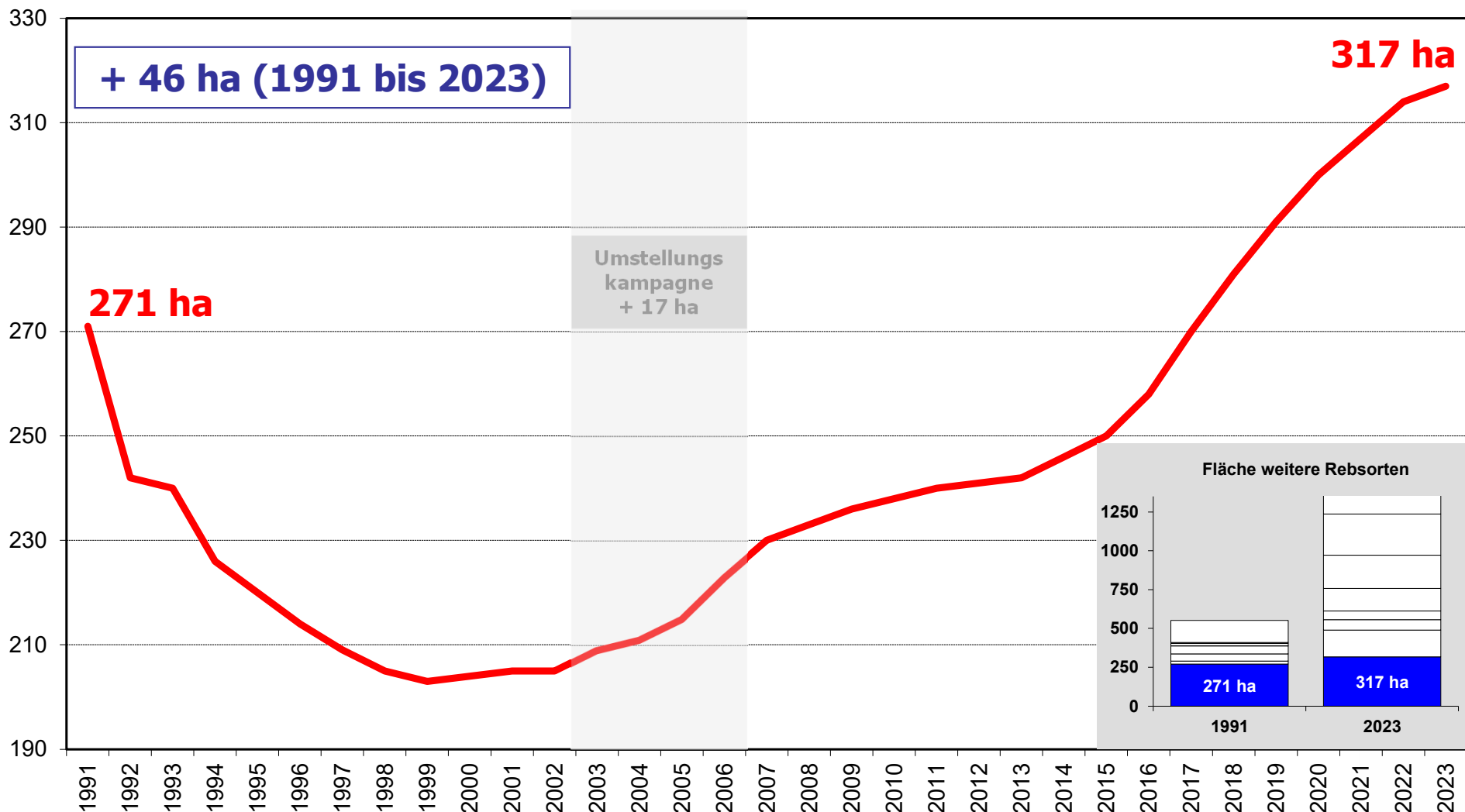
Altersstruktur humagne rouge



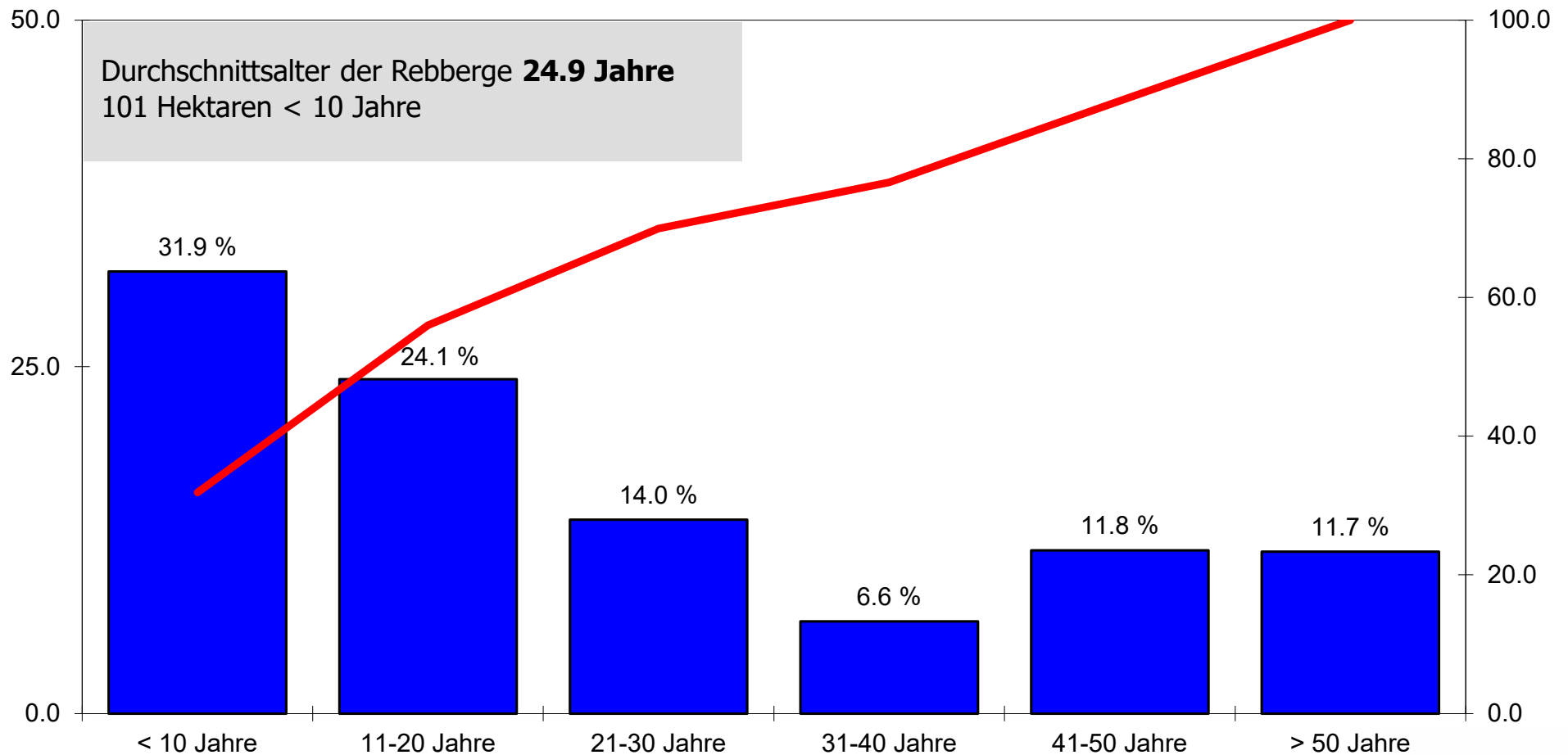
Zusammenfassung der Entwicklung der heimischen Rebsorten (1991 – 2023)



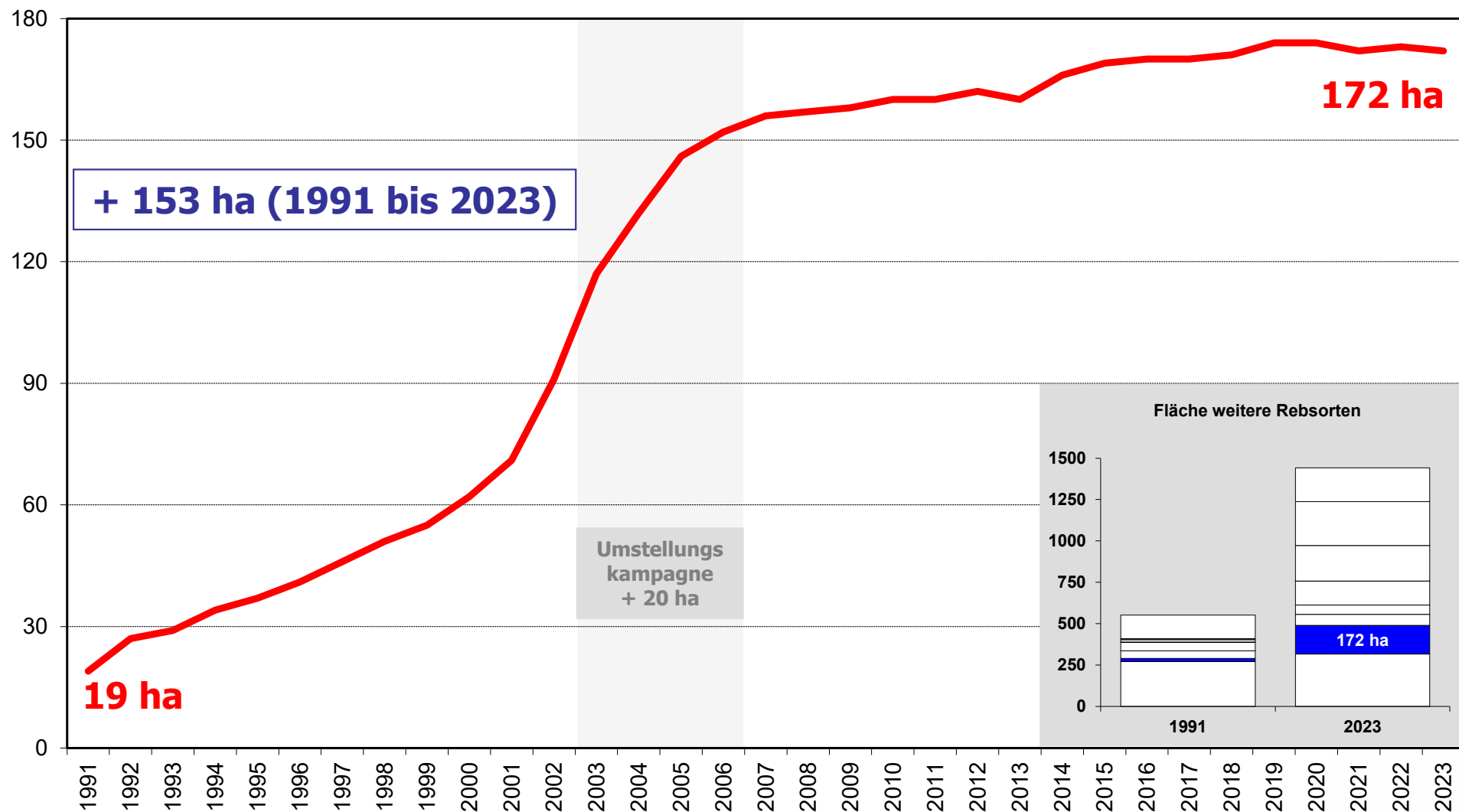
Flächenentwicklung sylvaner/rhin



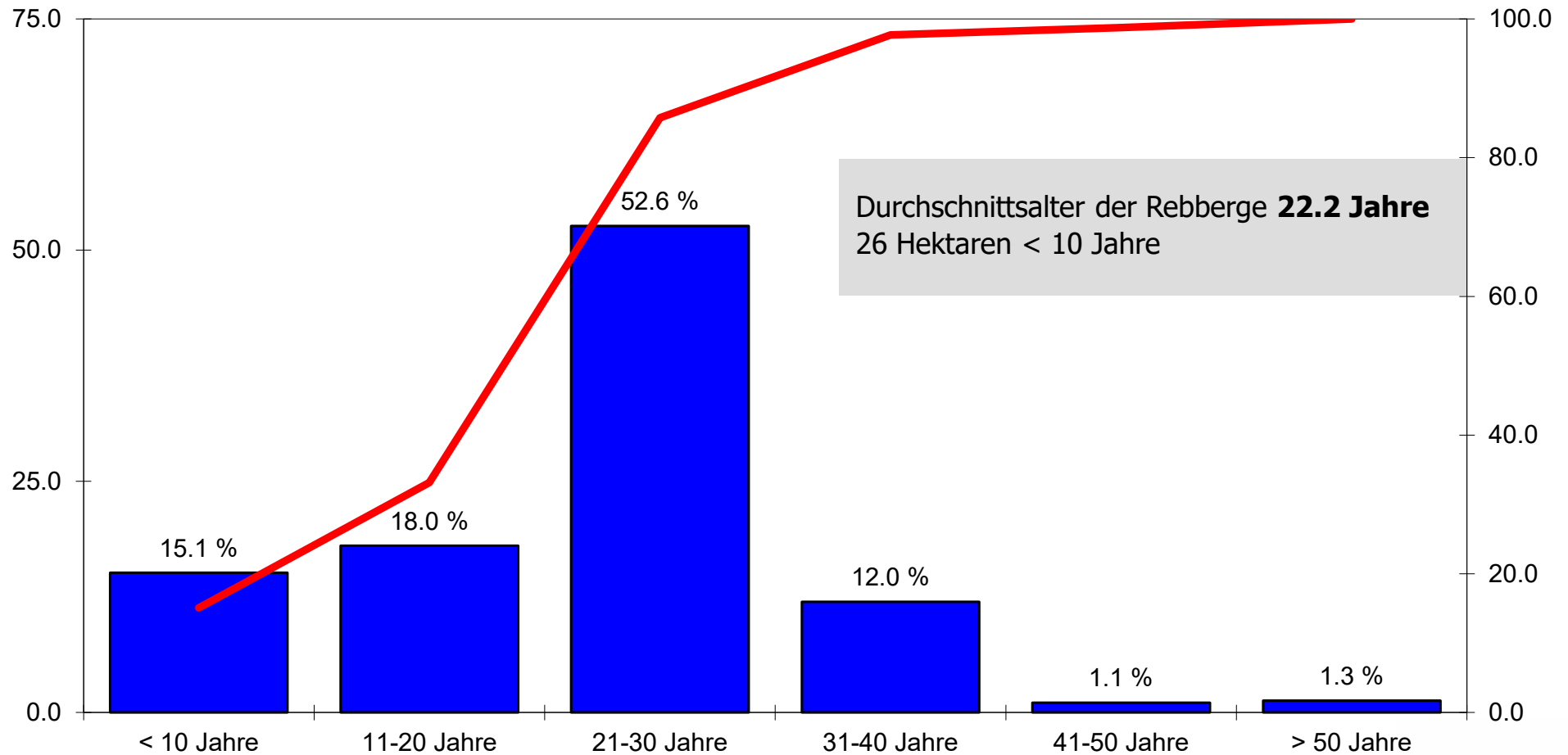
Alterstruktur sylvaner/rhin



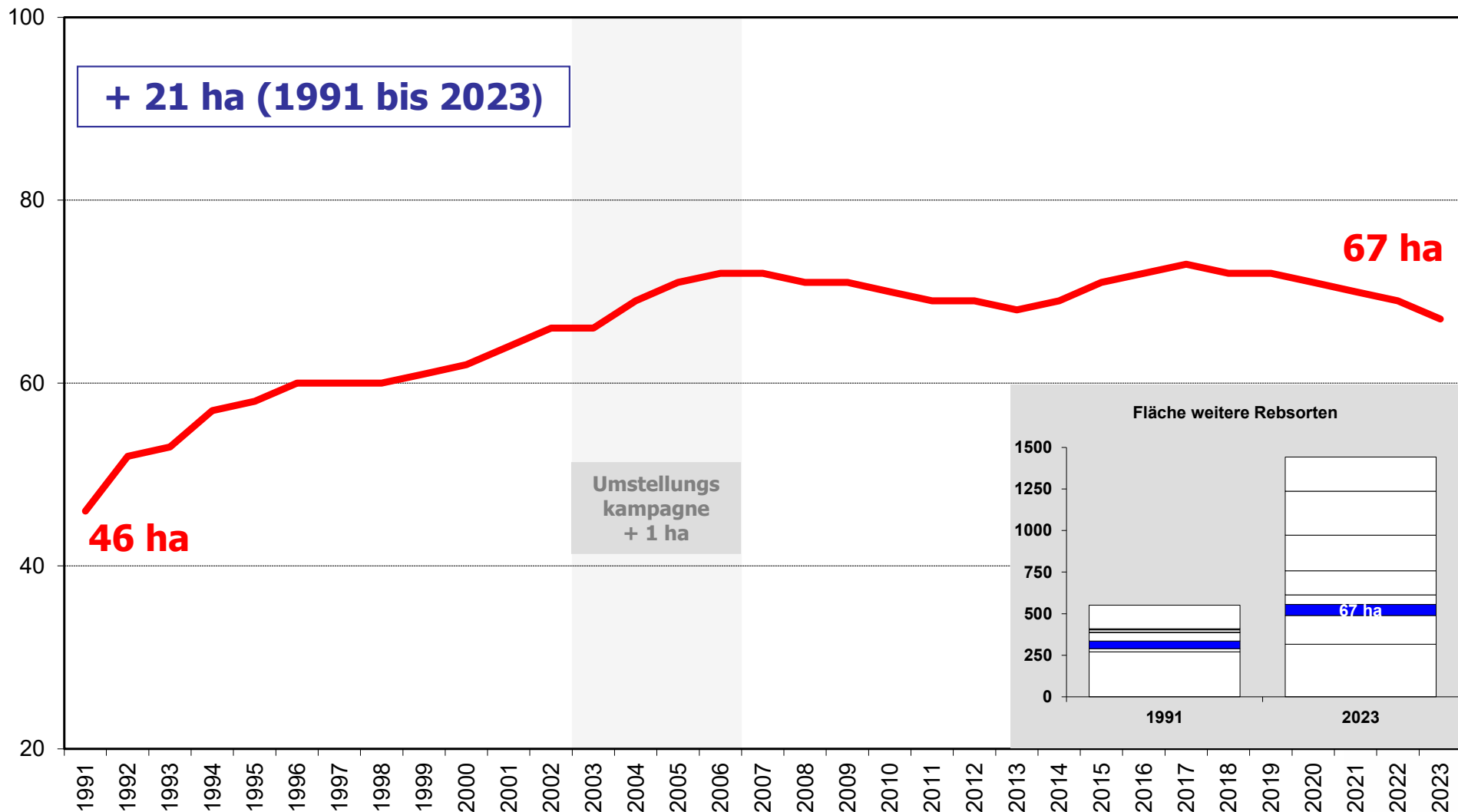
Flächenentwicklung syrah



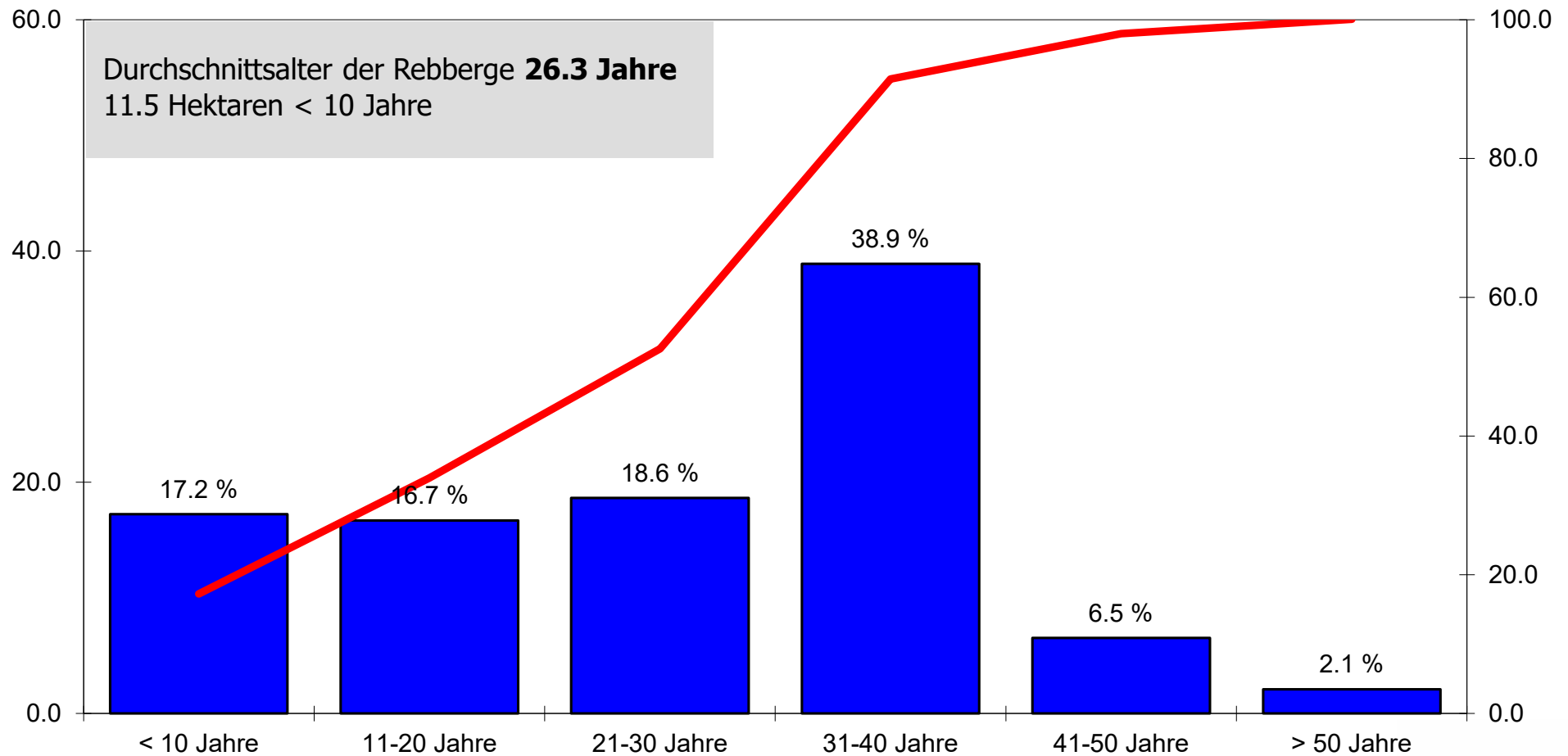
Altersstruktur syrah



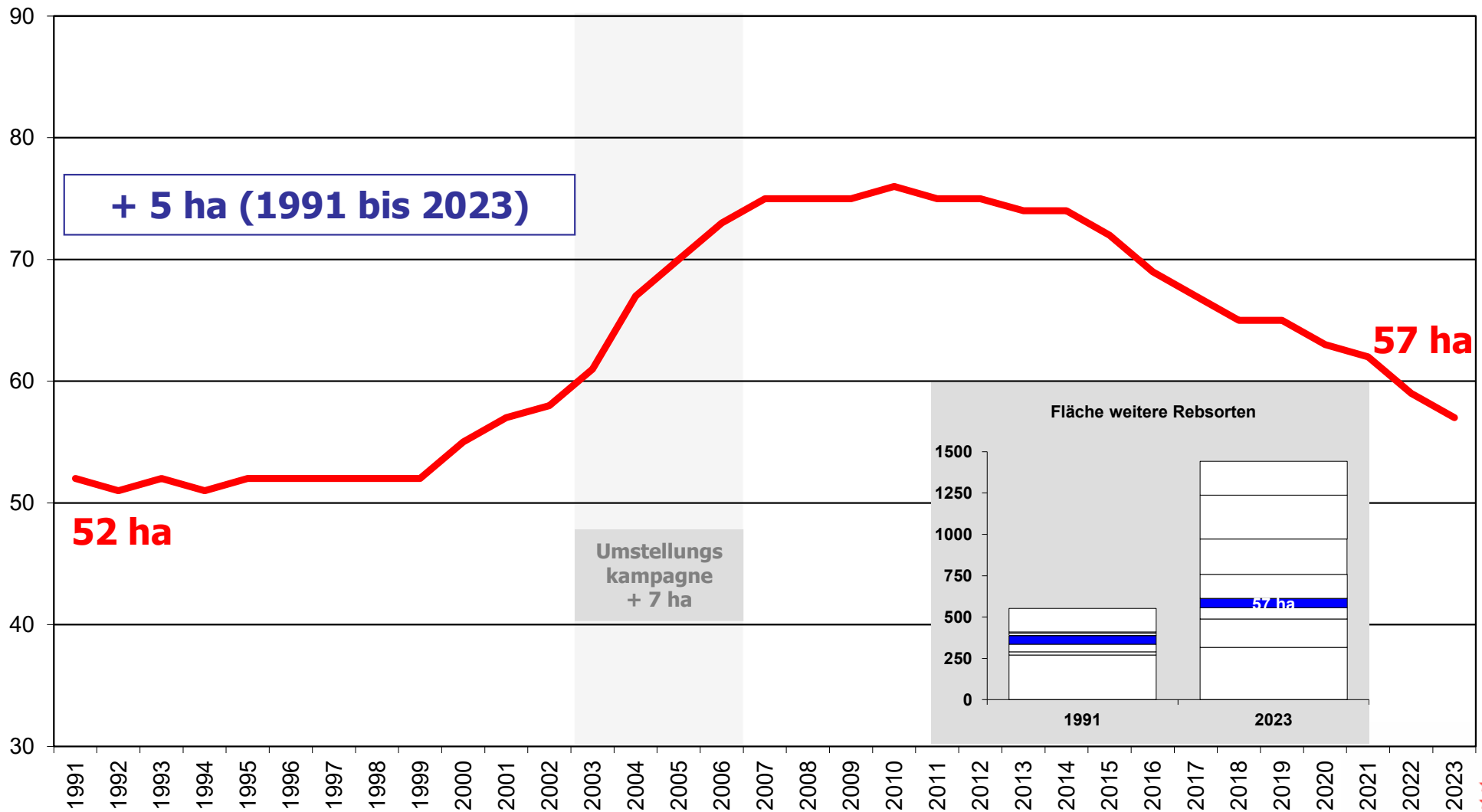
Flächenentwicklung chardonnay



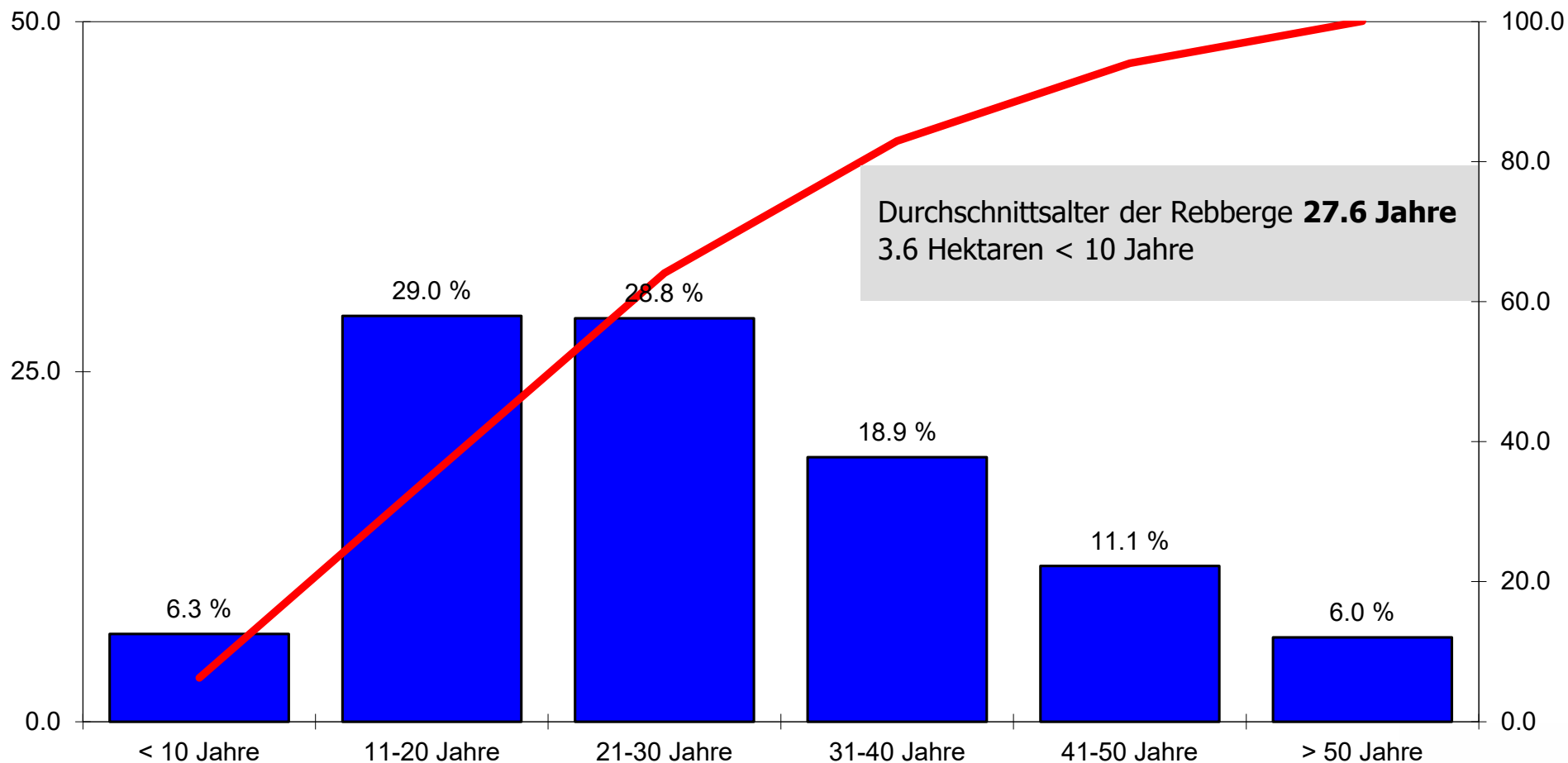
Altersstruktur chardonnay



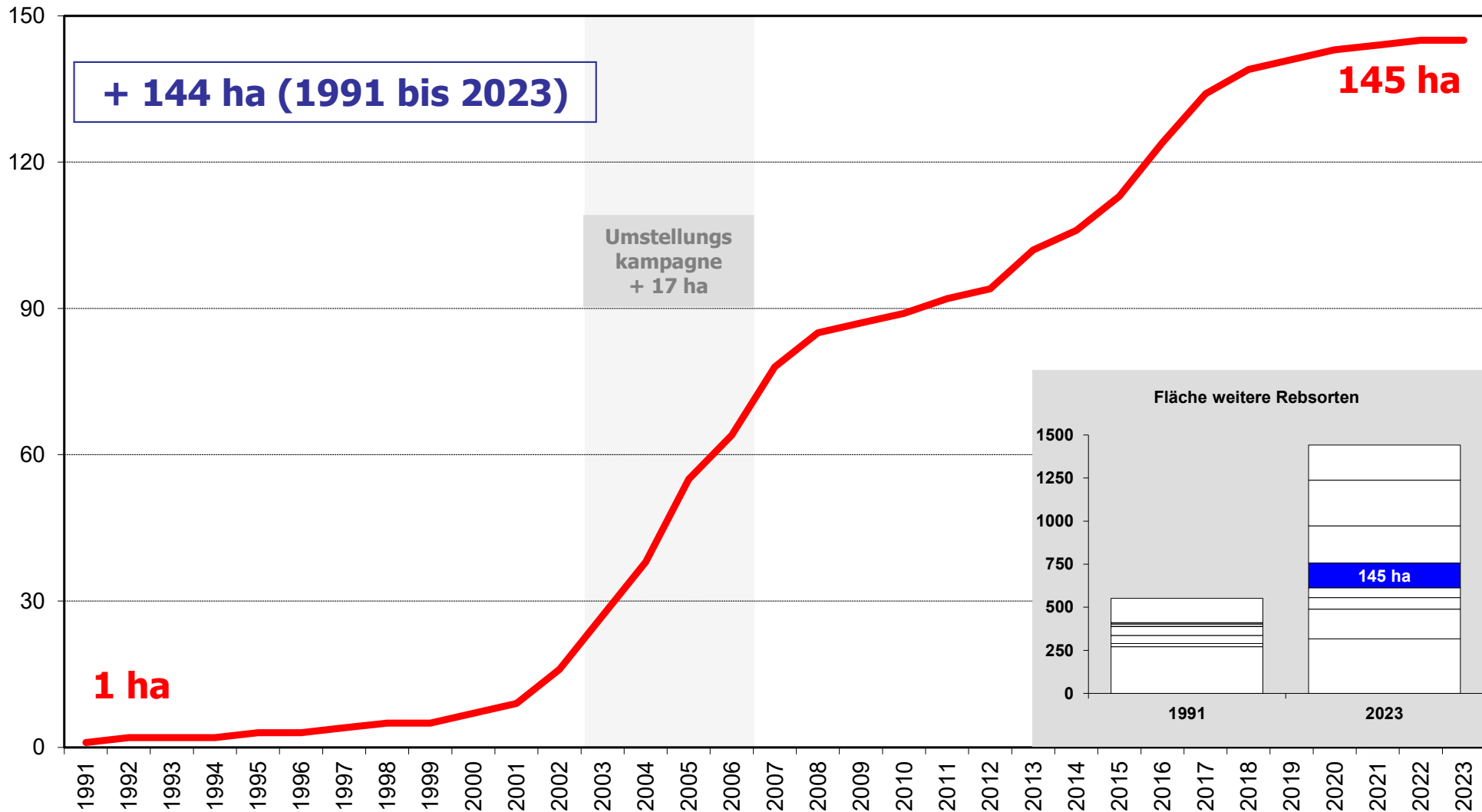
Flächenentwicklung pinot gris



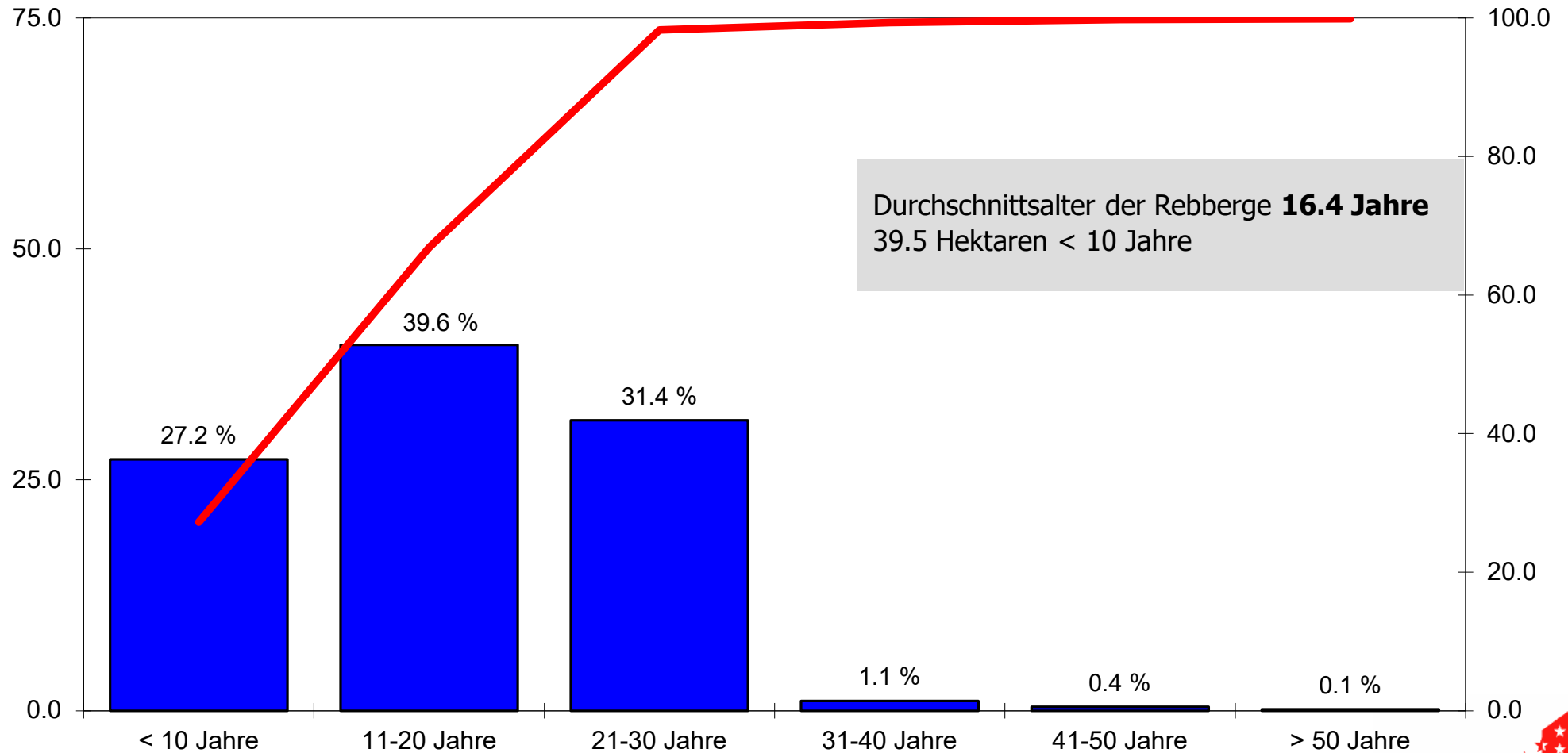
Alterstruktur pinot gris



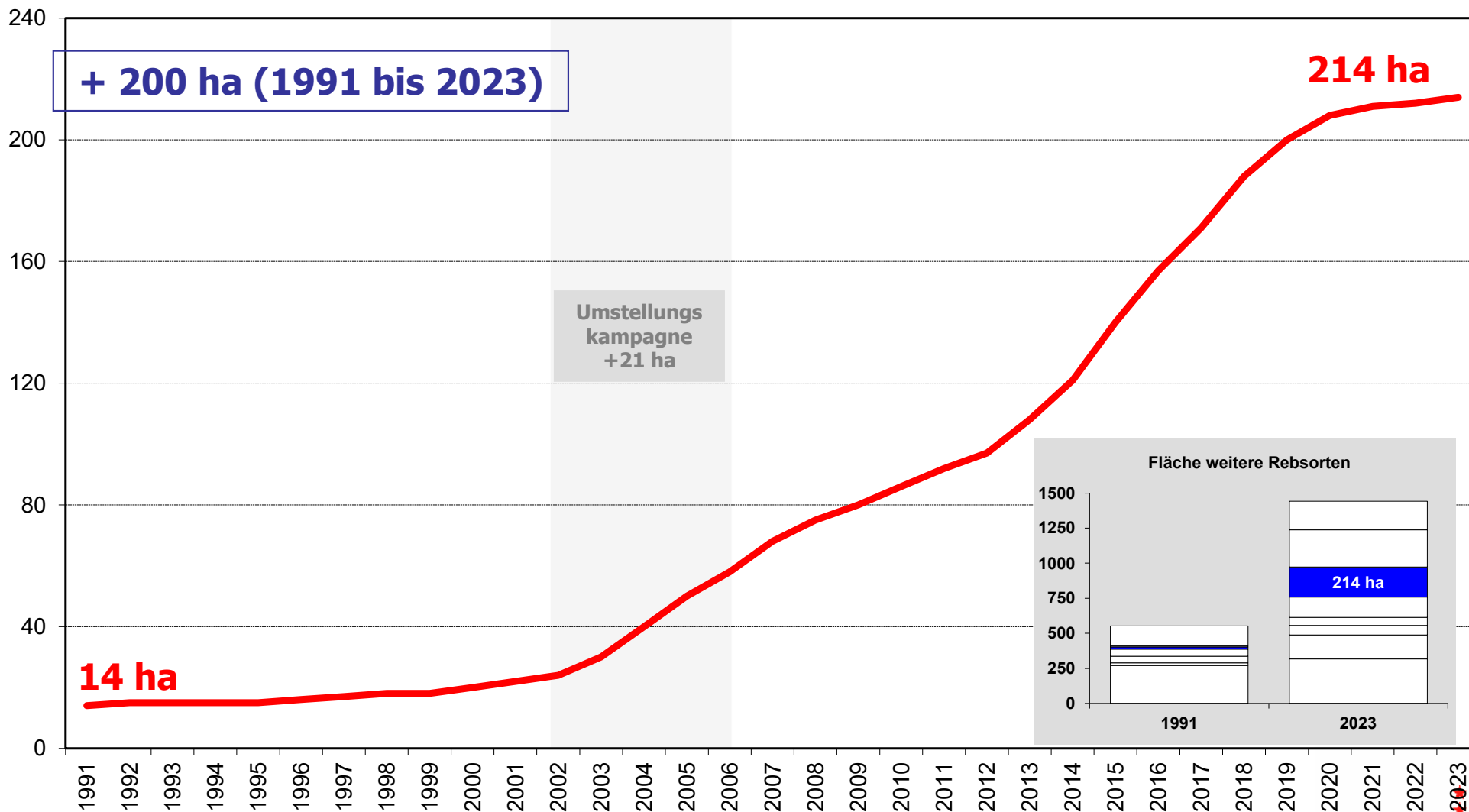
Flächenentwicklung merlot



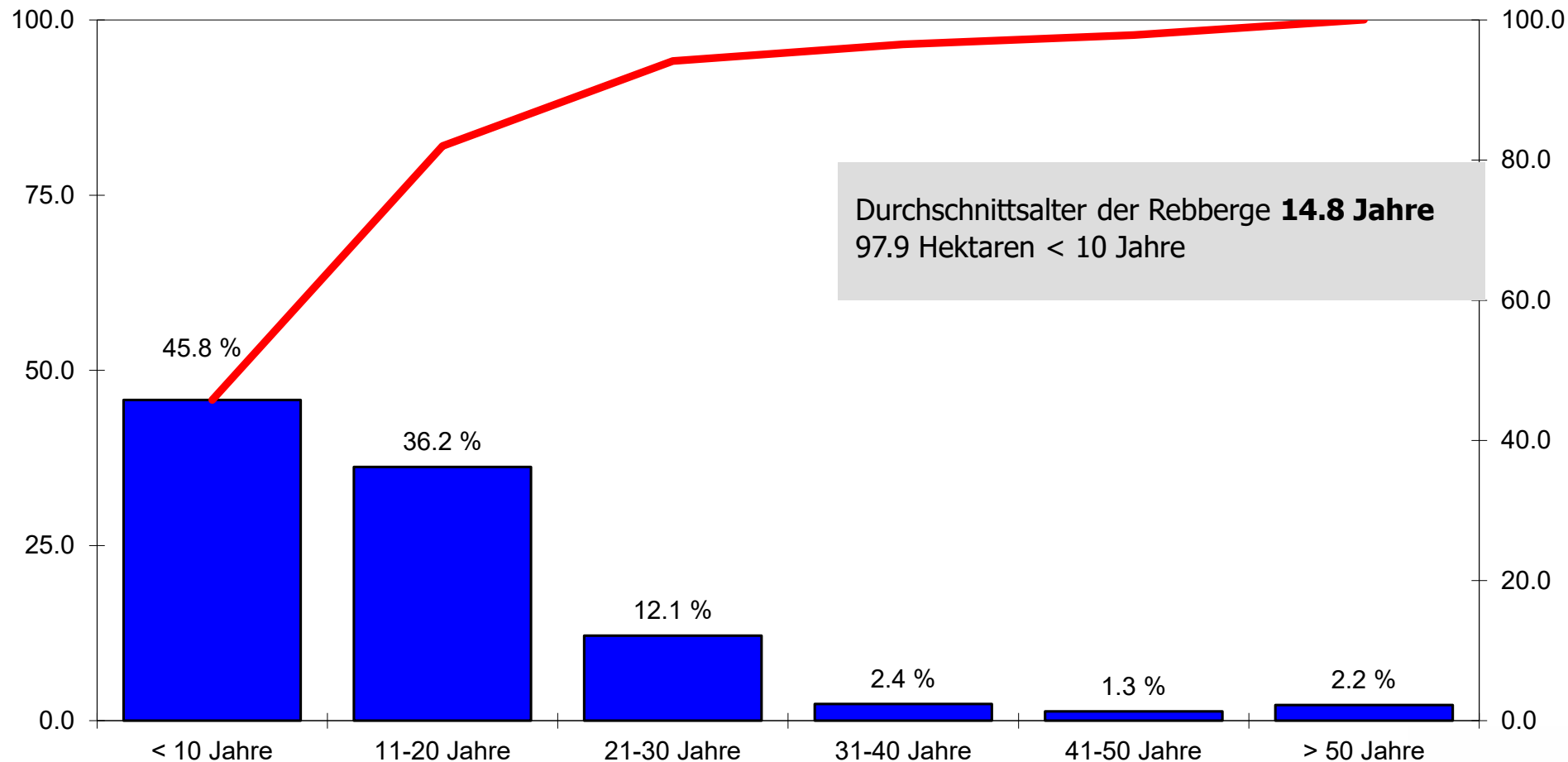
Altersstruktur merlot



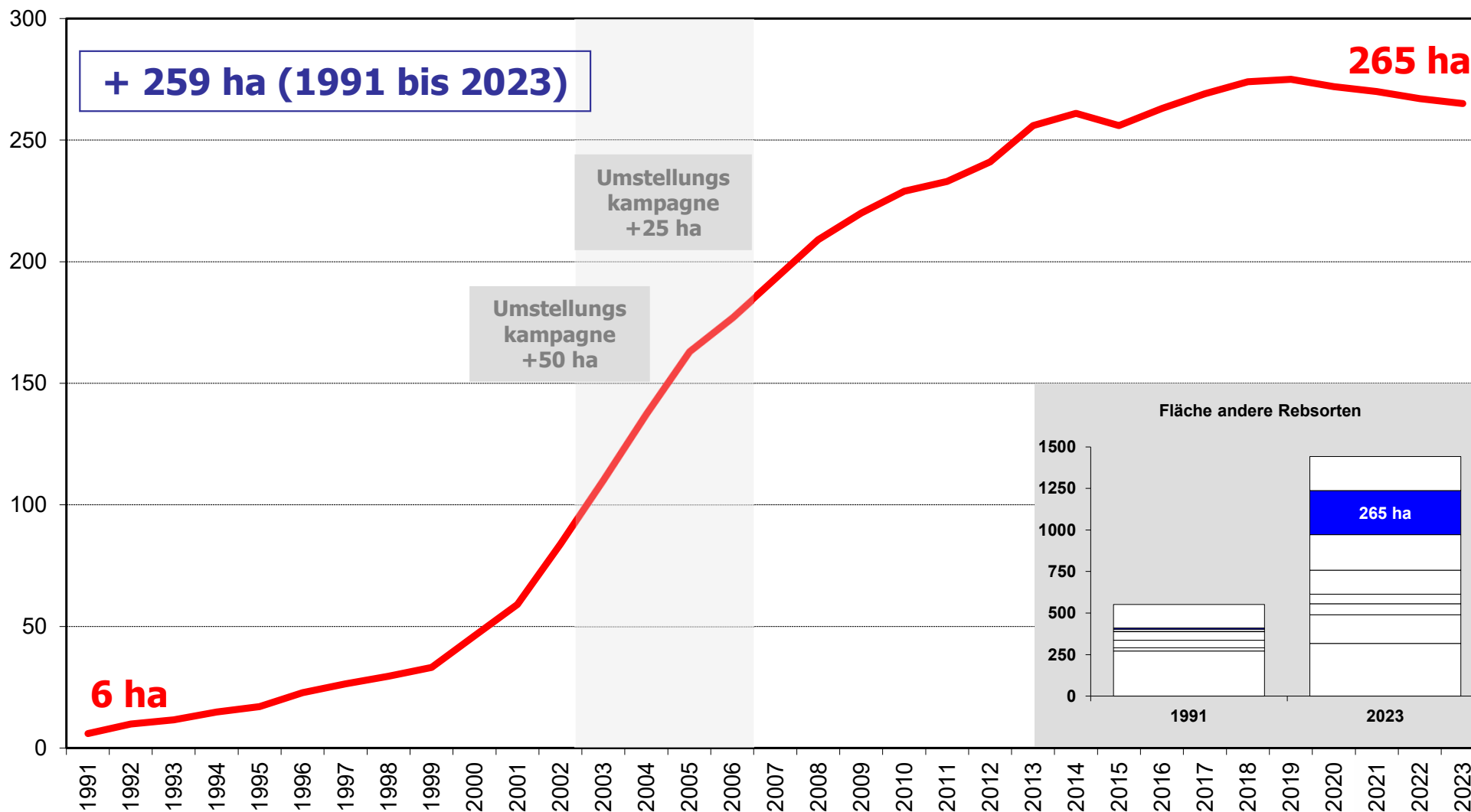
Flächenentwicklung savagnin blanc



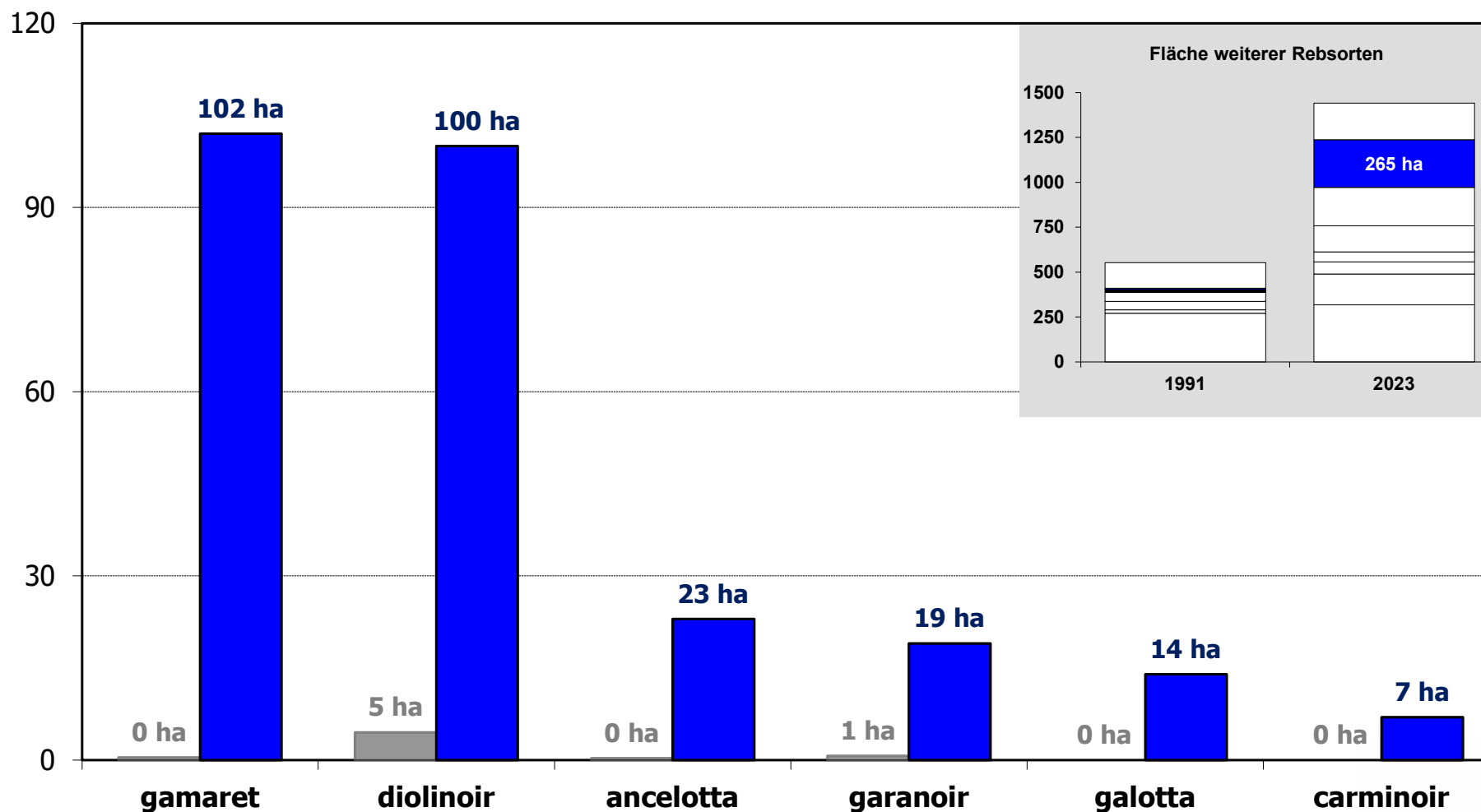
Altersstruktur savagnin blanc



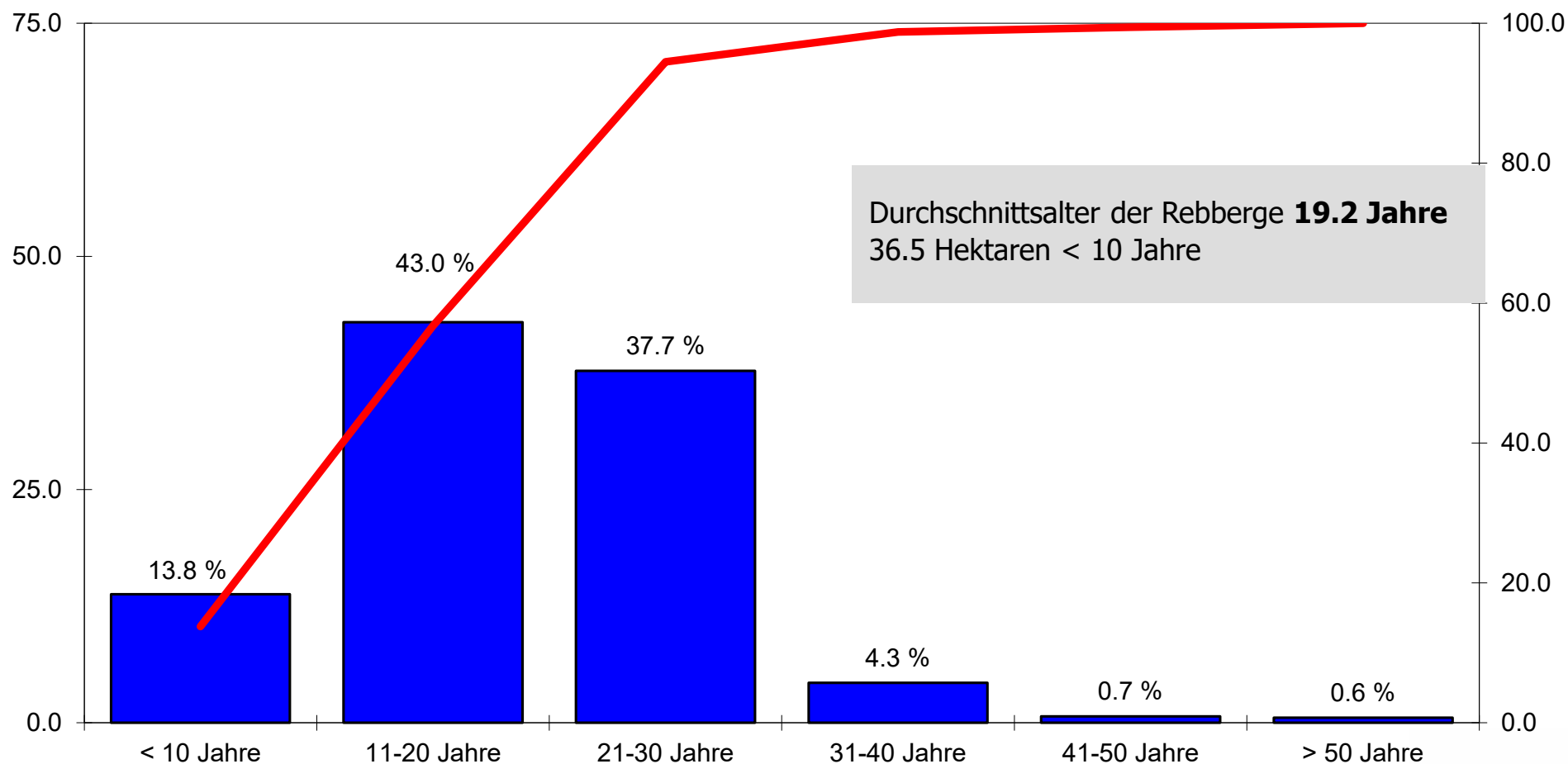
Flächenentwicklung der «verbesserersorten»



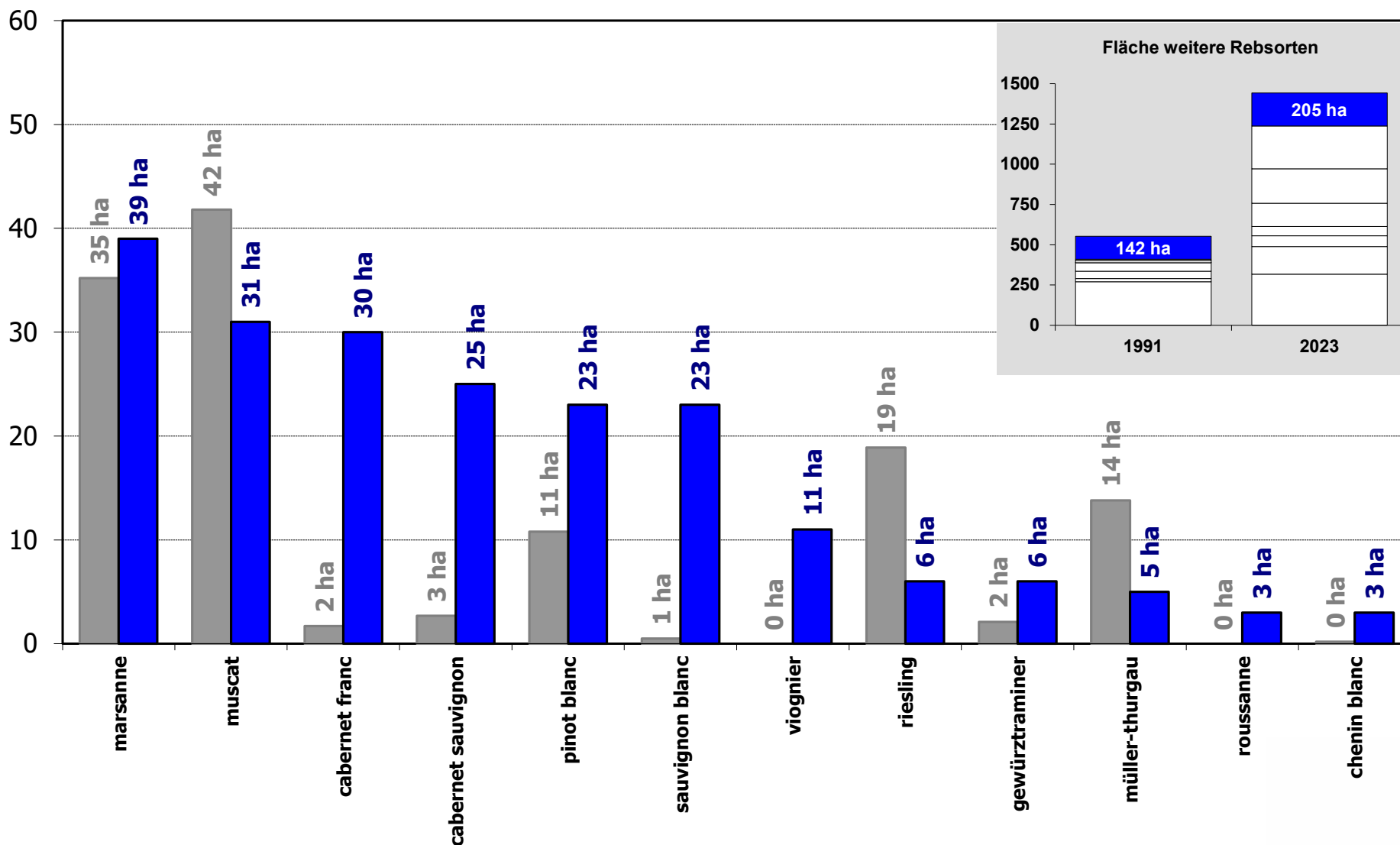
Zusammenfassung der Entwicklung der «verbesserersorten» (1991 – 2023)



Altersstruktur der «verbesserersorten»



Zusammenfassung der Entwicklung der weiteren Rebsorten (1991 – 2023)



Übersichtstabelle

	1991	2023	Δ	Flächen	Durchschnittsalter	<10 Jahre ha	< 10 Jahre %
chasselas	1'875	756	-1'119	16.3%	39.9	69.5	9.2%
pinot noir	1'732	1'273	- 459	27.5%	35.1	80.0	6.3%
gamay	984	457	- 527	9.9%	38.0	30.0	6.6%
Total	4'591	2'486	- 2'105	53.7%	37.1	179.5	7.2%
sylvaner/rhin	271	317	46	6.8%	24.9	101.0	31.9%
pinot gris	52	57	5	1.2%	27.6	3.6	6.3%
chardonnay	46	67	21	1.5%	26.3	11.5	17.2%
humagne rouge	44	143	99	3.1%	23.4	20.0	14.0%
petite arvine	39	260	221	5.6%	18.5	91.6	35.2%
syrah	19	172	153	3.7%	22.2	26.0	15.1%
cornalin	14	163	149	3.5%	19.2	35.0	21.5%
savagnin blanc	14	214	200	4.6%	14.8	97.9	45.8%
merlot	1	145	144	3.1%	16.4	39.5	27.2%
«verbesserersorten»	6	265	259	5.7%	19.2	36.5	13.8%
andere Rebsorten	169	345	176	7.5%	21.7	92.5	26.9%
Total	675	2'148	1'473	46.4%	21.3	555.1	25.8%
Total Weinberg	5'266	4'634	- 632	100.0%	29.8	734.6	15.9%

